

MAML1 Antibody (N-Terminus)
Goat Polyclonal Antibody
Catalog # ALS14564**Specification**

MAML1 Antibody (N-Terminus) - Product Information

Application	WB, IHC
Primary Accession	Q92585
Reactivity	Human, Mouse, Monkey, Pig
Host	Goat
Clonality	Polyclonal
Calculated MW	108kDa KDa

MAML1 Antibody (N-Terminus) - Additional Information**Gene ID** 9794**Other Names**

Mastermind-like protein 1, Mam-1, MAML1 (HGNC:13632)

Target/Specificity

Human MAML1.

Reconstitution & Storage

Store at -20°C. Minimize freezing and thawing.

Precautions

MAML1 Antibody (N-Terminus) is for research use only and not for use in diagnostic or therapeutic procedures.

MAML1 Antibody (N-Terminus) - Protein Information**Name** MAML1 ([HGNC:13632](#))**Function**

Acts as a transcriptional coactivator for NOTCH proteins. Has been shown to amplify NOTCH-induced transcription of HES1. Enhances phosphorylation and proteolytic turnover of the NOTCH intracellular domain in the nucleus through interaction with CDK8. Binds to CREBBP/CBP which promotes nucleosome acetylation at NOTCH enhancers and activates transcription. Induces phosphorylation and localization of CREBBP to nuclear foci. Plays a role in hematopoietic development by regulating NOTCH-mediated lymphoid cell fate decisions.

Cellular Location

Nucleus speckle. Note=Nuclear, in a punctate manner

Tissue Location

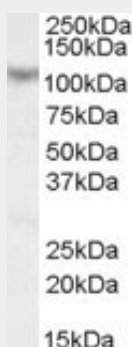
Widely expressed with highest levels in heart, pancreas, peripheral blood leukocytes and spleen

MAML1 Antibody (N-Terminus) - Protocols

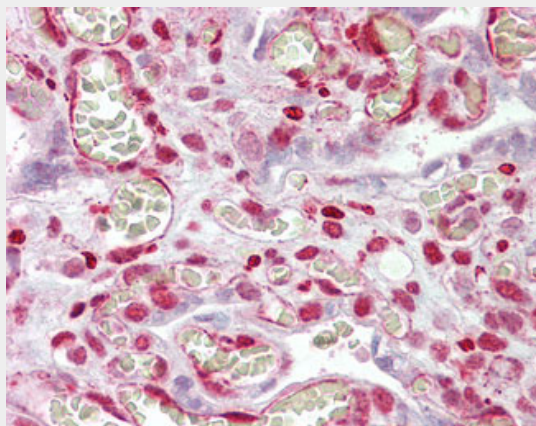
Provided below are standard protocols that you may find useful for product applications.

- [Western Blot](#)
- [Blocking Peptides](#)
- [Dot Blot](#)
- [Immunohistochemistry](#)
- [Immunofluorescence](#)
- [Immunoprecipitation](#)
- [Flow Cytometry](#)
- [Cell Culture](#)

MAML1 Antibody (N-Terminus) - Images



MAML1 antibody (0.1 ug/ml) staining of Human Skeletal Muscle lysate (35 ug protein/ml in RIPA...



Anti-MAML1 antibody IHC of human placenta.

MAML1 Antibody (N-Terminus) - Background

Acts as a transcriptional coactivator for NOTCH proteins. Has been shown to amplify NOTCH-induced transcription of HES1. Enhances phosphorylation and proteolytic turnover of the NOTCH intracellular domain in the nucleus through interaction with CDK8. Binds to CREBBP/CBP which promotes nucleosome acetylation at NOTCH enhancers and activates transcription. Induces phosphorylation and localization of CREBBP to nuclear foci. Plays a role in hematopoietic development by regulating NOTCH-mediated lymphoid cell fate decisions.

MAML1 Antibody (N-Terminus) - References

Nagase T.,et al.DNA Res. 3:17-24(1996).
Wu L.,et al.Nat. Genet. 26:484-489(2000).
Kitagawa M.,et al.Mol. Cell. Biol. 21:4337-4346(2001).
Fryer C.J.,et al.Genes Dev. 16:1397-1411(2002).
Fryer C.J.,et al.Mol. Cell 16:509-520(2004).