

CDH23 / Cadherin 23 Antibody (aa61-110)
Rabbit Polyclonal Antibody
Catalog # ALS14633**Specification**

CDH23 / Cadherin 23 Antibody (aa61-110) - Product Information

Application	IF, IHC
Primary Accession	Q9H251
Reactivity	Human, Mouse, Rat
Host	Rabbit
Clonality	Polyclonal
Calculated MW	369kDa KDa

CDH23 / Cadherin 23 Antibody (aa61-110) - Additional Information**Gene ID** 64072**Other Names**

Cadherin-23, Otocadherin, CDH23, KIAA1774, KIAA1812

Target/Specificity

CDH23 Antibody detects endogenous levels of total CDH23 protein.

Reconstitution & Storage

Short term 4°C, long term aliquot and store at -20°C, avoid freeze thaw cycles.

Precautions

CDH23 / Cadherin 23 Antibody (aa61-110) is for research use only and not for use in diagnostic or therapeutic procedures.

CDH23 / Cadherin 23 Antibody (aa61-110) - Protein Information**Name** CDH23 {ECO:0000303|PubMed:11138009, ECO:0000312|HGNC:HGNC:13733}**Function**

Cadherins are calcium-dependent cell adhesion proteins. They preferentially interact with themselves in a homophilic manner in connecting cells. CDH23 is required for establishing and/or maintaining the proper organization of the stereocilia bundle of hair cells in the cochlea and the vestibule during late embryonic/early postnatal development. It is part of the functional network formed by USH1C, USH1G, CDH23 and MYO7A that mediates mechanotransduction in cochlear hair cells. Required for normal hearing.

Cellular Location

Cell membrane; Single-pass type I membrane protein

Tissue Location

Particularly strong expression in the retina (PubMed:11138009). Found also in the cochlea

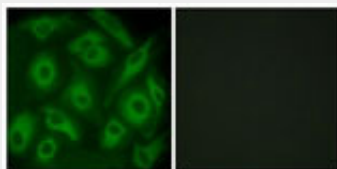
Volume
50 µl

CDH23 / Cadherin 23 Antibody (aa61-110) - Protocols

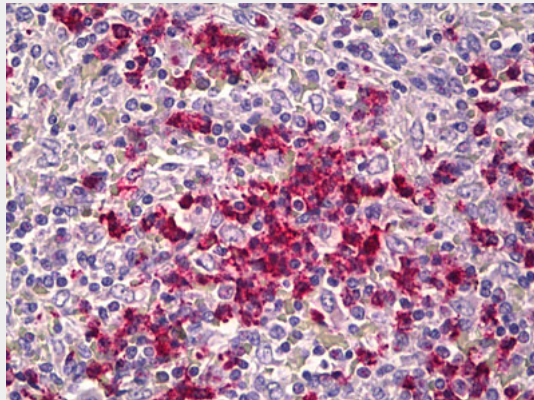
Provided below are standard protocols that you may find useful for product applications.

- [Western Blot](#)
- [Blocking Peptides](#)
- [Dot Blot](#)
- [Immunohistochemistry](#)
- [Immunofluorescence](#)
- [Immunoprecipitation](#)
- [Flow Cytometry](#)
- [Cell Culture](#)

CDH23 / Cadherin 23 Antibody (aa61-110) - Images



Immunofluorescence of HeLa cells, using CDH23 Antibody.



Anti-CDH23 antibody IHC of human spleen.

CDH23 / Cadherin 23 Antibody (aa61-110) - Background

Cadherins are calcium-dependent cell adhesion proteins. They preferentially interact with themselves in a homophilic manner in connecting cells. CDH23 is required for establishing and/or maintaining the proper organization of the stereocilia bundle of hair cells in the cochlea and the vestibule during late embryonic/early postnatal development. It is part of the functional network formed by USH1C, USH1G, CDH23 and MYO7A that mediates mechanotransduction in cochlear hair cells. Required for normal hearing.

CDH23 / Cadherin 23 Antibody (aa61-110) - References

Bolz H., et al. Nat. Genet. 27:108-112(2001).
Clark H.F., et al. Genome Res. 13:2265-2270(2003).

Lagziel A.,et al.Dev. Biol. 280:295-306(2005).
Deloukas P.,et al.Nature 429:375-381(2004).
Nagase T.,et al.DNA Res. 8:85-95(2001).