

**14-3-3 Antibody**  
**Rabbit Polyclonal Antibody**  
**Catalog # ALS14634****Specification**

---

**14-3-3 Antibody - Product Information**

Application	IHC
Reactivity	Human, Mouse, Rat, Chicken, Sheep, Bovine, Amphibian
Host	Rabbit
Clonality	Polyclonal

**14-3-3 Antibody - Additional Information****Target/Specificity**

Recognizes all isoforms of the 14-3-3 protein family. The 14-3-3 family consists of 30kD proteins that are involved in multiple cellular processes including protein kinase signalling pathways, regulation of cell cycle progression, transcription and i ...

**Reconstitution & Storage**

+4°C or -20°C, Avoid repeated freezing and thawing.

**Precautions**

14-3-3 Antibody is for research use only and not for use in diagnostic or therapeutic procedures.

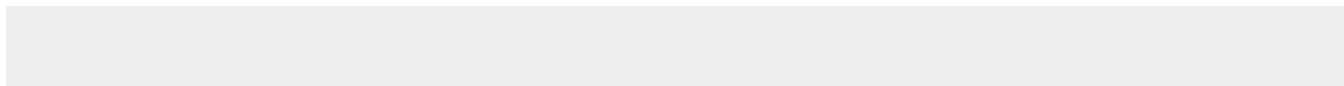
**14-3-3 Antibody - Protein Information****Volume**

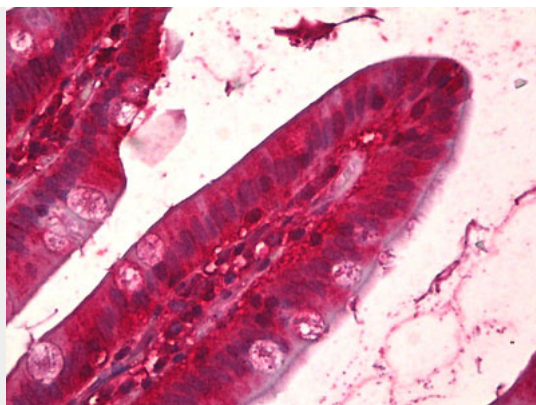
50 µl

**14-3-3 Antibody - Protocols**

Provided below are standard protocols that you may find useful for product applications.

- [Western Blot](#)
- [Blocking Peptides](#)
- [Dot Blot](#)
- [Immunohistochemistry](#)
- [Immunofluorescence](#)
- [Immunoprecipitation](#)
- [Flow Cytometry](#)
- [Cell Culture](#)

**14-3-3 Antibody - Images**



Anti-14-3-3 antibody IHC of human small intestine.