

HP / Haptoglobin Antibody
Goat Polyclonal Antibody
Catalog # ALS14651**Specification**

HP / Haptoglobin Antibody - Product Information

Application	IHC
Primary Accession	P00738
Reactivity	Human
Host	Goat
Clonality	Polyclonal
Calculated MW	45kDa KDa

HP / Haptoglobin Antibody - Additional Information**Gene ID** 3240**Other Names**

Haptoglobin, Zonulin, Haptoglobin alpha chain, Haptoglobin beta chain, HP

Target/Specificity

Recognizes human haptoglobin.

Reconstitution & Storage

Short term 4°C, long term aliquot and store at -20°C, avoid freeze thaw cycles.

Precautions

HP / Haptoglobin Antibody is for research use only and not for use in diagnostic or therapeutic procedures.

HP / Haptoglobin Antibody - Protein Information**Name** HP**Function**

As a result of hemolysis, hemoglobin is found to accumulate in the kidney and is secreted in the urine. Haptoglobin captures, and combines with free plasma hemoglobin to allow hepatic recycling of heme iron and to prevent kidney damage. Haptoglobin also acts as an antioxidant, has antibacterial activity, and plays a role in modulating many aspects of the acute phase response. Hemoglobin/haptoglobin complexes are rapidly cleared by the macrophage CD163 scavenger receptor expressed on the surface of liver Kupfer cells through an endocytic lysosomal degradation pathway.

Cellular Location

Secreted.

Tissue Location

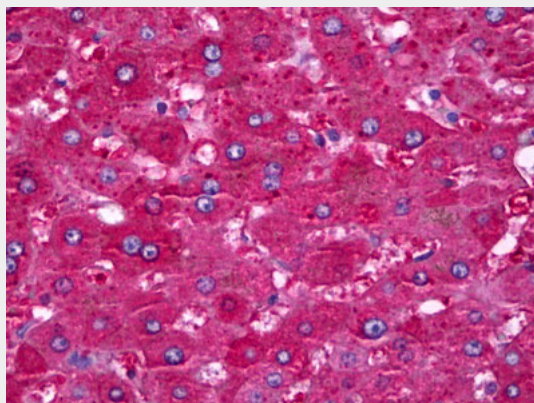
Expressed by the liver and secreted in plasma.

HP / Haptoglobin Antibody - Protocols

Provided below are standard protocols that you may find useful for product applications.

- [Western Blot](#)
- [Blocking Peptides](#)
- [Dot Blot](#)
- [Immunohistochemistry](#)
- [Immunofluorescence](#)
- [Immunoprecipitation](#)
- [Flow Cytometry](#)
- [Cell Culture](#)

HP / Haptoglobin Antibody - Images



Anti-Haptoglobin antibody IHC of human liver.

HP / Haptoglobin Antibody - Background

As a result of hemolysis, hemoglobin is found to accumulate in the kidney and is secreted in the urine. Haptoglobin captures, and combines with free plasma hemoglobin to allow hepatic recycling of heme iron and to prevent kidney damage. Haptoglobin also acts as an Antimicrobial; Antioxidant, has antibacterial activity and plays a role in modulating many aspects of the acute phase response. Hemoglobin/haptoglobin complexes are rapidly cleared by the macrophage CD163 scavenger receptor expressed on the surface of liver Kupfer cells through an endocytic lysosomal degradation pathway.

HP / Haptoglobin Antibody - References

van der Straten A.,et al.EMBO J. 2:1003-1007(1983).
Yang F.,et al.Proc. Natl. Acad. Sci. U.S.A. 80:5875-5879(1983).
van der Straten A.,et al.FEBS Lett. 168:103-107(1984).
Brune J.L.,et al.Nucleic Acids Res. 12:4531-4538(1984).
Bensi G.,et al.EMBO J. 4:119-126(1985).