

TRPC4 Antibody (aa930-947, clone S77-15)
Mouse Monoclonal Antibody
Catalog # ALS14654

Specification

TRPC4 Antibody (aa930-947, clone S77-15) - Product Information

Application	WB, IHC-P, IF, ICC, IP
Primary Accession	O9UBN4
Reactivity	Human, Mouse, Rat
Host	Mouse
Clonality	Monoclonal
Calculated MW	112kDa KDa
Dilution	WB~~1:1000 IHC-P~~N/A IF~~1:50~200 ICC~~N/A IP~~N/A

TRPC4 Antibody (aa930-947, clone S77-15) - Additional Information

Gene ID 7223

Other Names

Short transient receptor potential channel 4, TrpC4, Trp-related protein 4, hTrp-4, hTrp4, TRPC4

Target/Specificity

Detects ~110 kD protein.

Reconstitution & Storage

Short term 4°C, long term aliquot and store at -20°C, avoid freeze thaw cycles.

Precautions

TRPC4 Antibody (aa930-947, clone S77-15) is for research use only and not for use in diagnostic or therapeutic procedures.

TRPC4 Antibody (aa930-947, clone S77-15) - Protein Information

Name TRPC4

Function

Forms a receptor-activated non-selective calcium permeant cation channel (PubMed:11042129, PubMed:11713258, PubMed:16144838, PubMed:39478185). Acts as a cell-cell contact-dependent endothelial calcium entry channel (PubMed:19996314). Forms a homomeric ion channel or a heteromeric ion channel with TRPC1; the heteromeric ion channel has

reduced calcium permeability compared to the homomeric channel (PubMed:39478185). Also permeable to monovalent ions including sodium, lithium and cesium ions (PubMed:39478185).

Cellular Location

Cell membrane; Multi-pass membrane protein. Note=Enhanced insertion into the cell membrane after activation of the EGF receptor

Tissue Location

Strongly expressed in placenta. Expressed at lower levels in heart, pancreas, kidney and brain. Expressed in endothelial cells. Isoform alpha was found to be the predominant isoform. Isoform beta was not found in pancreas and brain

Volume

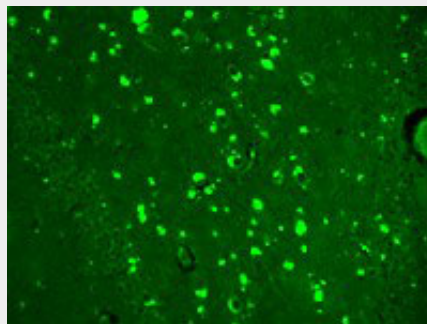
50 µl

TRPC4 Antibody (aa930-947, clone S77-15) - Protocols

Provided below are standard protocols that you may find useful for product applications.

- [Western Blot](#)
- [Blocking Peptides](#)
- [Dot Blot](#)
- [Immunohistochemistry](#)
- [Immunofluorescence](#)
- [Immunoprecipitation](#)
- [Flow Cytometry](#)
- [Cell Culture](#)

TRPC4 Antibody (aa930-947, clone S77-15) - Images



TrpC4 (S77-15), Human hippocampus.

TRPC4 Antibody (aa930-947, clone S77-15) - Background

Form a receptor-activated non-selective calcium permeant cation channel. Acts as a cell-cell contact-dependent endothelial calcium entry channel. Probably operated by a phosphatidylinositol second messenger system activated by receptor tyrosine kinases or G-protein coupled receptors. Mediates cation entry, with an enhanced permeability to barium over calcium. May also be activated by intracellular calcium store depletion.

TRPC4 Antibody (aa930-947, clone S77-15) - References

McKay R.R., et al. *Biochem. J.* 351:735-746(2000).
Mery L., et al. *FEBS Lett.* 487:377-383(2001).
Schaefer M., et al. *J. Biol. Chem.* 277:3752-3759(2002).
Dunham A., et al. *Nature* 428:522-528(2004).
Mural R.J., et al. Submitted (JUL-2005) to the EMBL/GenBank/DDBJ databases.