

OXER1 Antibody
Rabbit Polyclonal Antibody
Catalog # ALS14693**Specification**

OXER1 Antibody - Product Information

Application	WB, IHC
Primary Accession	Q8TDS5
Reactivity	Human, Mouse, Rat, Pig
Host	Rabbit
Clonality	Polyclonal
Calculated MW	46kDa KDa

OXER1 Antibody - Additional Information**Gene ID** 165140**Other Names**

Oxoeicosanoid receptor 1, 5-oxo-ETE G-protein coupled receptor, G-protein coupled receptor 170, G-protein coupled receptor R527, G-protein coupled receptor TG1019, OXER1, GPR170, TG1019

Target/Specificity

The high expression level of the receptor in leukocytes makes it the best positive control sample. When probing other tissue samples such as liver and kidney, membrane preparations or higher sensitivity detection systems may be required for visualiza ...

Reconstitution & Storage

Short term 4°C, long term aliquot and store at -20°C, avoid freeze thaw cycles.

Precautions

OXER1 Antibody is for research use only and not for use in diagnostic or therapeutic procedures.

OXER1 Antibody - Protein Information**Name** OXER1**Synonyms** GPR170, TG1019**Function**

Receptor for eicosanoids and polyunsaturated fatty acids such as 5-oxo-6E,8Z,11Z,14Z-eicosatetraenoic acid (5-OXO-ETE), 5(S)-hydroperoxy-6E,8Z,11Z,14Z-eicosatetraenoic acid (5(S)-HPETE) and arachidonic acid. Seems to be coupled to the G(i)/G(o), families of heteromeric G proteins.

Cellular Location

Membrane; Multi-pass membrane protein

Tissue Location

Expressed in various tissues except brain. Expression is more intense in liver, kidney, peripheral leukocyte, lung, and spleen than in other tissues. Highly expressed in eosinophils, neutrophils, and lung macrophages

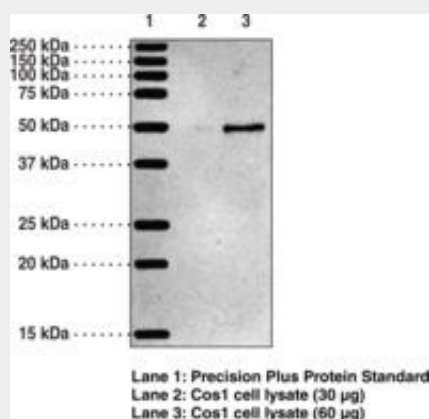
Volume

1 ea

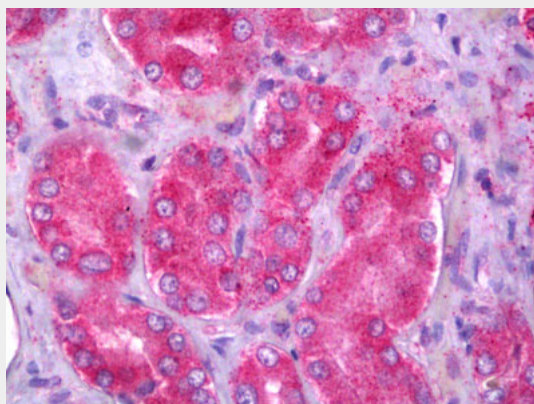
OXER1 Antibody - Protocols

Provided below are standard protocols that you may find useful for product applications.

- [Western Blot](#)
- [Blocking Peptides](#)
- [Dot Blot](#)
- [Immunohistochemistry](#)
- [Immunofluorescence](#)
- [Immunoprecipitation](#)
- [Flow Cytometry](#)
- [Cell Culture](#)

OXER1 Antibody - Images

Western blot of OXER1 antibody ALS14693.



Anti-OXER1 antibody IHC of human kidney.

OXER1 Antibody - Background

Receptor for eicosanoids and polyunsaturated fatty acids such as 5-oxo-6E,8Z,11Z,14Z-eicosatetraenoic acid (5-OXO-ETE), 5(S)-hydroperoxy-6E,8Z,11Z,14Z-eicosatetraenoic acid (5(S)-HPETE) and arachidonic acid. Seems to be coupled to the G(i)/G(o), families of heteromeric G proteins.

OXER1 Antibody - References

Hosoi T.,et al.J. Biol. Chem. 277:31459-31465(2002).
Jones C.E.,et al.Mol. Pharmacol. 63:471-477(2003).
Suwa M.,et al.Submitted (JUL-2001) to the EMBL/GenBank/DDBJ databases.
Takeda S.,et al.FEBS Lett. 520:97-101(2002).
Hillier L.W.,et al.Nature 434:724-731(2005).