

ANAPC11 / APC11 Antibody (Internal)
Rabbit Polyclonal Antibody
Catalog # ALS14708**Specification**

ANAPC11 / APC11 Antibody (Internal) - Product Information

Application	IF, WB, IHC
Primary Accession	Q9NYG5
Reactivity	Human, Mouse, Rat
Host	Rabbit
Clonality	Polyclonal
Calculated MW	10kDa KDa

ANAPC11 / APC11 Antibody (Internal) - Additional Information**Gene ID** 51529**Other Names**

Anaphase-promoting complex subunit 11, APC11, Cyclosome subunit 11, Hepatocellular carcinoma-associated RING finger protein, ANAPC11

Target/Specificity

Human ANAPC11

Reconstitution & Storage

Short term 4°C, long term aliquot and store at -20°C, avoid freeze thaw cycles. Store undiluted.

Precautions

ANAPC11 / APC11 Antibody (Internal) is for research use only and not for use in diagnostic or therapeutic procedures.

ANAPC11 / APC11 Antibody (Internal) - Protein Information**Name** ANAPC11**Function**

Together with the cullin protein ANAPC2, constitutes the catalytic component of the anaphase promoting complex/cyclosome (APC/C), a cell cycle-regulated E3 ubiquitin ligase that controls progression through mitosis and the G1 phase of the cell cycle. The APC/C complex acts by mediating ubiquitination and subsequent degradation of target proteins: it mainly mediates the formation of 'Lys-11'-linked polyubiquitin chains and, to a lower extent, the formation of 'Lys-48'- and 'Lys-63'-linked polyubiquitin chains. May recruit the E2 ubiquitin-conjugating enzymes to the complex.

Cellular Location

Cytoplasm. Nucleus

Tissue Location

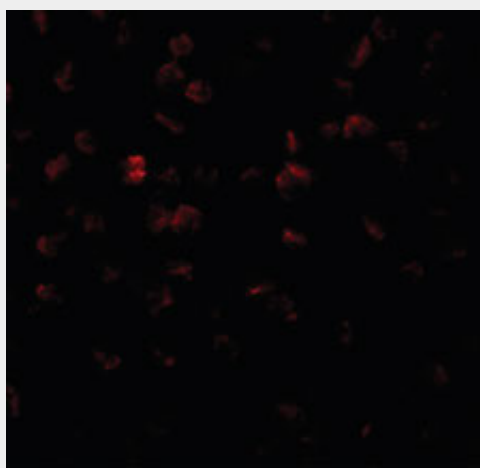
Expressed at high levels in skeletal muscle and heart; in moderate levels in brain, kidney, and liver; and at low levels in colon, thymus, spleen, small intestine, placenta, lung and peripheral blood leukocyte.

ANAPC11 / APC11 Antibody (Internal) - Protocols

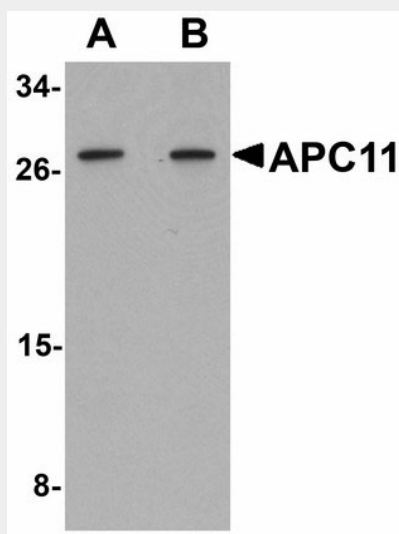
Provided below are standard protocols that you may find useful for product applications.

- [Western Blot](#)
- [Blocking Peptides](#)
- [Dot Blot](#)
- [Immunohistochemistry](#)
- [Immunofluorescence](#)
- [Immunoprecipitation](#)
- [Flow Cytometry](#)
- [Cell Culture](#)

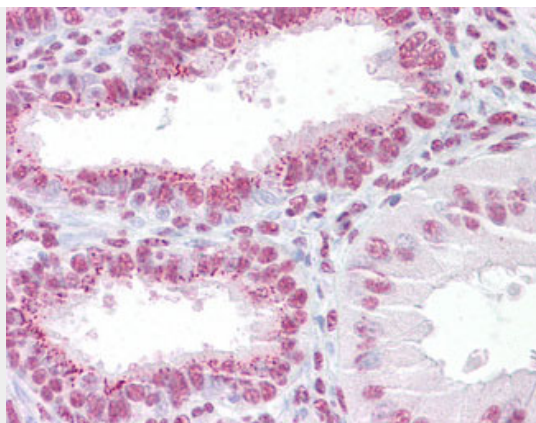
ANAPC11 / APC11 Antibody (Internal) - Images



Immunofluorescence of APC11 in 3T3 cells with APC11 antibody at 20 ug/ml.



Western blot of APC11 in 3T3 cell tissue lysate with APC11 antibody at (A) 1 and (B) 2 ug/ml.



Anti-ANAPC11 / APC11 antibody IHC of human uterus.

ANAPC11 / APC11 Antibody (Internal) - Background

Together with the cullin protein ANAPC2, constitutes the catalytic component of the anaphase promoting complex/cyclosome (APC/C), a cell cycle-regulated E3 ubiquitin ligase that controls progression through mitosis and the G1 phase of the cell cycle. The APC/C complex acts by mediating ubiquitination and subsequent degradation of target proteins: it mainly mediates the formation of 'Lys-11'-linked polyubiquitin chains and, to a lower extent, the formation of 'Lys-48'- and 'Lys-63'-linked polyubiquitin chains. May recruit the E2 ubiquitin-conjugating enzymes to the complex.

ANAPC11 / APC11 Antibody (Internal) - References

- Chan A.H.,et al.J. Cell. Biochem. 83:249-258(2001).
Li N.,et al.Submitted (MAR-2000) to the EMBL/GenBank/DDBJ databases.
Zhang Q.-H.,et al.Genome Res. 10:1546-1560(2000).
Zody M.C.,et al.Nature 440:1045-1049(2006).
Gmachl M.,et al.Proc. Natl. Acad. Sci. U.S.A. 97:8973-8978(2000).