

**PEA15 / PEA-15 Antibody (aa81-130)**  
**Rabbit Polyclonal Antibody**  
**Catalog # ALS14724****Specification**

---

**PEA15 / PEA-15 Antibody (aa81-130) - Product Information**

Application	IF, WB, IHC
Primary Accession	<a href="#">Q15121</a>
Reactivity	Human, Mouse, Rat
Host	Rabbit
Clonality	Polyclonal
Calculated MW	15kDa KDa

**PEA15 / PEA-15 Antibody (aa81-130) - Additional Information****Gene ID** 8682**Other Names**

Astrocytic phosphoprotein PEA-15, 15 kDa phosphoprotein enriched in astrocytes, Phosphoprotein enriched in diabetes, PED, PEA15

**Target/Specificity**

PEA-15 antibody detects endogenous levels of total PEA-15 protein.

**Reconstitution & Storage**

Short term 4°C, long term aliquot and store at -20°C, avoid freeze thaw cycles.

**Precautions**

PEA15 / PEA-15 Antibody (aa81-130) is for research use only and not for use in diagnostic or therapeutic procedures.

**PEA15 / PEA-15 Antibody (aa81-130) - Protein Information****Name** PEA15**Function**

Blocks Ras-mediated inhibition of integrin activation and modulates the ERK MAP kinase cascade. Inhibits RPS6KA3 activities by retaining it in the cytoplasm (By similarity). Inhibits both TNFRSF6- and TNFRSF1A-mediated CASP8 activity and apoptosis. Regulates glucose transport by controlling both the content of SLC2A1 glucose transporters on the plasma membrane and the insulin-dependent trafficking of SLC2A4 from the cell interior to the surface.

**Cellular Location**

Cytoplasm. Note=Associated with microtubules.

**Tissue Location**

Ubiquitously expressed. Most abundant in tissues such as heart, brain, muscle and adipose tissue which utilize glucose as an energy source. Lower expression in glucose-producing tissues Higher

levels of expression are found in tissues from individuals with type 2 diabetes than in controls.

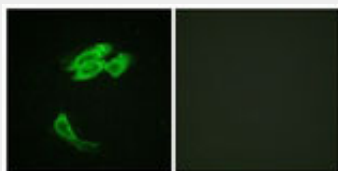
**Volume**

50  $\mu$ l

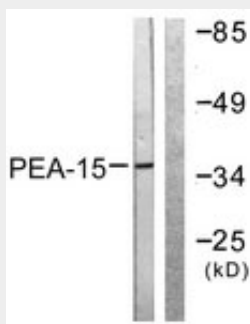
**PEA15 / PEA-15 Antibody (aa81-130) - Protocols**

Provided below are standard protocols that you may find useful for product applications.

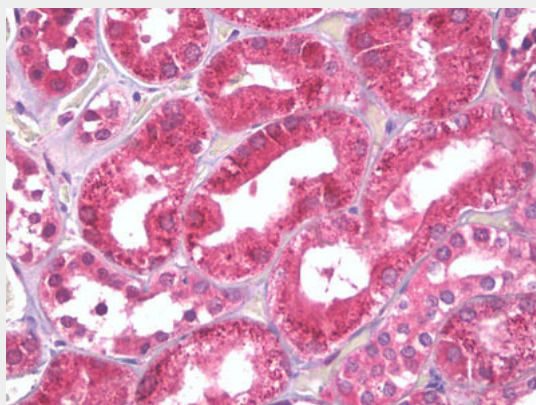
- [Western Blot](#)
- [Blocking Peptides](#)
- [Dot Blot](#)
- [Immunohistochemistry](#)
- [Immunofluorescence](#)
- [Immunoprecipitation](#)
- [Flow Cytometry](#)
- [Cell Culture](#)

**PEA15 / PEA-15 Antibody (aa81-130) - Images**

Immunofluorescence of HeLa cells, using PEA-15 antibody.



Western blot of extracts from Jurkat cells, treated with PMA 125 ng/ml 30', using PEA-15 antibody.



Anti-PEA15 antibody IHC of human kidney, tubules.

**PEA15 / PEA-15 Antibody (aa81-130) - Background**

Blocks Ras-mediated inhibition of integrin activation and modulates the ERK MAP kinase cascade. Inhibits RPS6KA3 activities by retaining it in the cytoplasm (By similarity). Inhibits both TNFRSF6- and TNFRSF1A-mediated CASP8 activity and apoptosis. Regulates glucose transport by controlling both the content of SLC2A1 glucose transporters on the plasma membrane and the insulin-dependent trafficking of SLC2A4 from the cell interior to the surface.

**PEA15 / PEA-15 Antibody (aa81-130) - References**

Estelles A.,et al.J. Biol. Chem. 271:14800-14806(1996).  
Condorelli G.,et al.EMBO J. 17:3858-3866(1998).  
Wolford J.K.,et al.Gene 241:143-148(2000).  
Mural R.J.,et al.Submitted (SEP-2005) to the EMBL/GenBank/DDBJ databases.  
Kalnina N.,et al.Submitted (MAY-2003) to the EMBL/GenBank/DDBJ databases.