

SNCG / Gamma-Synuclein Antibody (aa78-127)
Rabbit Polyclonal Antibody
Catalog # ALS14773**Specification**

SNCG / Gamma-Synuclein Antibody (aa78-127) - Product Information

Application	WB, IHC
Primary Accession	O76070
Reactivity	Human
Host	Rabbit
Clonality	Polyclonal
Calculated MW	13kDa KDa

SNCG / Gamma-Synuclein Antibody (aa78-127) - Additional Information**Gene ID** 6623**Other Names**

Gamma-synuclein, Breast cancer-specific gene 1 protein, Persyn, Synoretin, SR, SNCG, BCSG1, PERSYN, PRSN

Target/Specificity

Synuclein gamma Antibody detects endogenous levels of total Synuclein gamma protein.

Reconstitution & Storage

Short term 4°C, long term aliquot and store at -20°C, avoid freeze thaw cycles.

Precautions

SNCG / Gamma-Synuclein Antibody (aa78-127) is for research use only and not for use in diagnostic or therapeutic procedures.

SNCG / Gamma-Synuclein Antibody (aa78-127) - Protein Information**Name** SNCG**Synonyms** BCSG1, PERSYN, PRSN**Function**

Plays a role in neurofilament network integrity. May be involved in modulating axonal architecture during development and in the adult. In vitro, increases the susceptibility of neurofilament-H to calcium-dependent proteases (By similarity). May also function in modulating the keratin network in skin. Activates the MAPK and Elk-1 signal transduction pathway (By similarity).

Cellular Location

Cytoplasm, perinuclear region. Cytoplasm, cytoskeleton, microtubule organizing center, centrosome. Cytoplasm, cytoskeleton, spindle. Note=Associated with centrosomes in several interphase cells. In mitotic cells, localized to the poles of the spindle

Tissue Location

Highly expressed in brain, particularly in the substantia nigra. Also expressed in the corpus callosum, heart, skeletal muscle, ovary, testis, colon and spleen. Weak expression in pancreas, kidney and lung

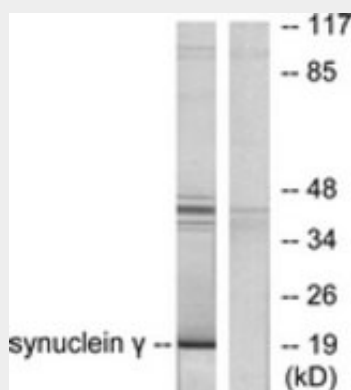
Volume

50 μ l

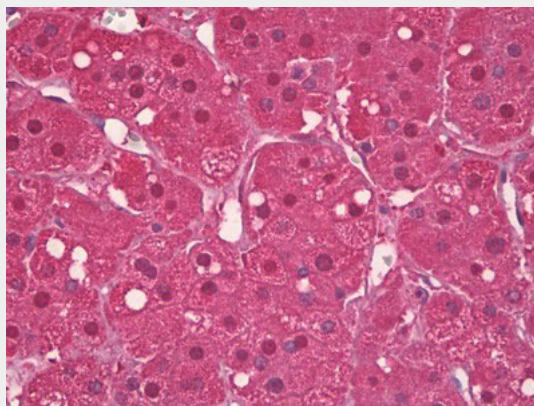
SNCG / Gamma-Synuclein Antibody (aa78-127) - Protocols

Provided below are standard protocols that you may find useful for product applications.

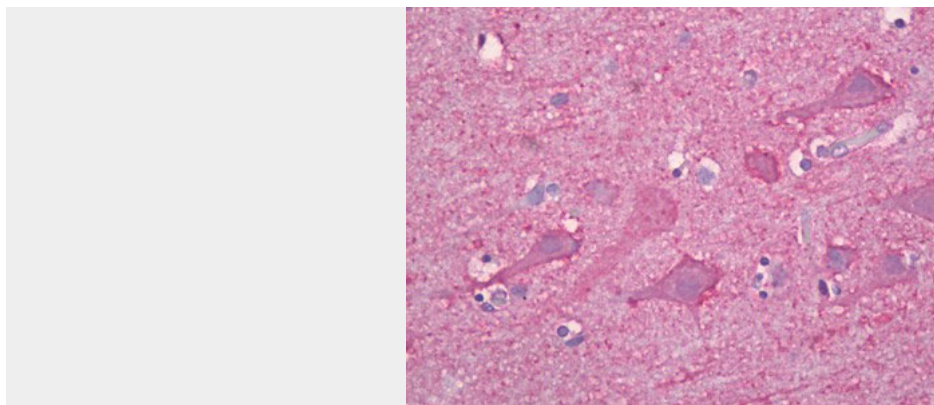
- [Western Blot](#)
- [Blocking Peptides](#)
- [Dot Blot](#)
- [Immunohistochemistry](#)
- [Immunofluorescence](#)
- [Immunoprecipitation](#)
- [Flow Cytometry](#)
- [Cell Culture](#)

SNCG / Gamma-Synuclein Antibody (aa78-127) - Images

Western blot of extracts from HT29 cells, using Synuclein gamma Antibody.



Anti-SNCG antibody IHC of human adrenal cortex.



Anti-SNCG antibody IHC of human brain, cortex neurons.

SNCG / Gamma-Synuclein Antibody (aa78-127) - Background

Plays a role in neurofilament network integrity. May be involved in modulating axonal architecture during development and in the adult. In vitro, increases the susceptibility of neurofilament-H to calcium-dependent proteases (By similarity). May also function in modulating the keratin network in skin. Activates the MAPK and Elk-1 signal transduction pathway (By similarity).

SNCG / Gamma-Synuclein Antibody (aa78-127) - References

- Ji H.,et al.Cancer Res. 57:759-764(1997).
Ninkina N.N.,et al.Hum. Mol. Genet. 7:1417-1424(1998).
Lavedan C.,et al.Hum. Genet. 103:106-112(1998).
Han C.,et al.Submitted (AUG-2001) to the EMBL/GenBank/DDBJ databases.
Pronin A.N.,et al.J. Biol. Chem. 275:26515-26522(2000).