

**EP / DBI Antibody (clone 27C9)**  
**Mouse Monoclonal Antibody**  
**Catalog # ALS14796****Specification**

---

**EP / DBI Antibody (clone 27C9) - Product Information**

Application	WB, IHC
Primary Accession	<a href="#">P07108</a>
Reactivity	Human
Host	Mouse
Clonality	Monoclonal
Calculated MW	10kDa KDa

**EP / DBI Antibody (clone 27C9) - Additional Information****Gene ID** 1622**Other Names**

Acyl-CoA-binding protein, ACBP, Diazepam-binding inhibitor, DBI, Endozepine, EP, DBI

**Reconstitution & Storage**

Short term 4°C, long term aliquot and store at -20°C, avoid freeze thaw cycles.

**Precautions**

EP / DBI Antibody (clone 27C9) is for research use only and not for use in diagnostic or therapeutic procedures.

**EP / DBI Antibody (clone 27C9) - Protein Information****Name** DBI**Function**

Binds medium- and long-chain acyl-CoA esters with very high affinity and may function as an intracellular carrier of acyl-CoA esters. It is also able to displace diazepam from the benzodiazepine (BZD) recognition site located on the GABA type A receptor. It is therefore possible that this protein also acts as a neuropeptide to modulate the action of the GABA receptor.

**Cellular Location**

Endoplasmic reticulum. Golgi apparatus Note=Golgi localization is dependent on ligand binding (PubMed:17953517).

**Tissue Location**

Isoform 1 is ubiquitous, with a moderate expression level. Isoform 2 is ubiquitous with high level in liver and adipose tissue. Isoform 3 is ubiquitous with strong expression in adipose tissue and heart.

**Volume**

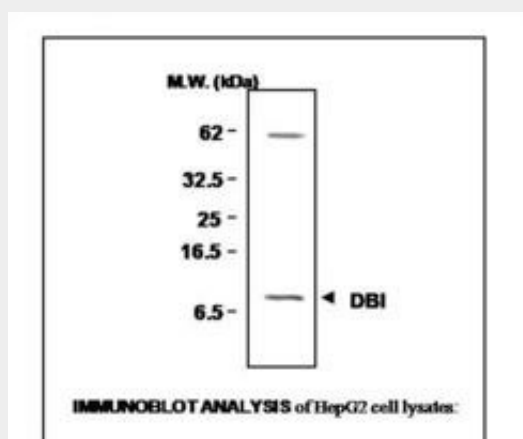
50 µl

## EP / DBI Antibody (clone 27C9) - Protocols

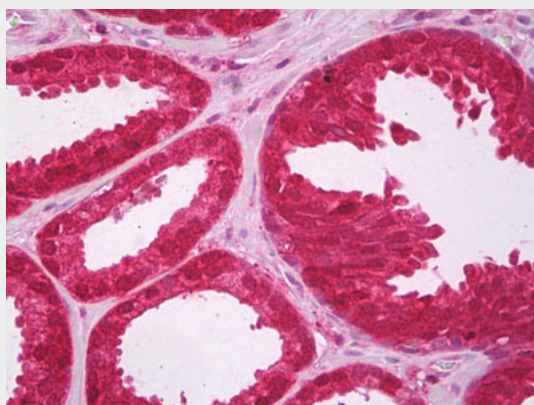
Provided below are standard protocols that you may find useful for product applications.

- [Western Blot](#)
- [Blocking Peptides](#)
- [Dot Blot](#)
- [Immunohistochemistry](#)
- [Immunofluorescence](#)
- [Immunoprecipitation](#)
- [Flow Cytometry](#)
- [Cell Culture](#)

## EP / DBI Antibody (clone 27C9) - Images



0



Anti-DBI antibody IHC of human prostate.

## EP / DBI Antibody (clone 27C9) - Background

Binds medium- and long-chain acyl-CoA esters with very high affinity and may function as an intracellular carrier of acyl-CoA esters. It is also able to displace diazepam from the benzodiazepine (BZD) recognition site located on the GABA type A receptor. It is therefore possible that this protein also acts as a neuropeptide to modulate the action of the GABA receptor.

## EP / DBI Antibody (clone 27C9) - References

Gray P.W.,et al.Proc. Natl. Acad. Sci. U.S.A. 83:7547-7551(1986).  
Webb N.R.,et al.DNA 6:71-79(1987).  
Nitz I.,et al.Int. J. Biochem. Cell Biol. 37:2395-2405(2005).  
Ludewig A.H.,et al.IUBMB Life 63:547-552(2011).  
Nitz I.,et al.J. Cell. Mol. Med. 15:909-927(2011).