

ORMDL1 Antibody
Rabbit Polyclonal Antibody
Catalog # ALS14827**Specification**

ORMDL1 Antibody - Product Information

Application	IF, WB
Primary Accession	Q9P0S3
Reactivity	Human, Mouse
Host	Rabbit
Clonality	Polyclonal
Calculated MW	17kDa KDa

ORMDL1 Antibody - Additional Information**Gene ID** 94101**Other Names**

ORM1-like protein 1, Adoplin-1, ORMDL1

Target/Specificity

Human ORMDL1. ORMDL1 antibody is predicted to not cross-react with other ORMDL protein family members.

Reconstitution & Storage

Short term 4°C, long term aliquot and store at -20°C, avoid freeze thaw cycles. Store undiluted.

Precautions

ORMDL1 Antibody is for research use only and not for use in diagnostic or therapeutic procedures.

ORMDL1 Antibody - Protein Information**Name** ORMDL1**Function**

Plays an essential role in the homeostatic regulation of sphingolipid de novo biosynthesis by modulating the activity of the serine palmitoyltransferase (SPT) in response to ceramide levels (PubMed:20182505). When complexed to SPT, the binding of ceramides to its N-terminus stabilizes a conformation that block SPT substrate entry, hence preventing SPT catalytic activity. Through this mechanism, maintains ceramide levels at sufficient concentrations for the production of complex sphingolipids, but which prevents the accumulation of ceramides to levels that trigger apoptosis (By similarity).

Cellular Location

Endoplasmic reticulum membrane; Multi-pass membrane protein

Tissue Location

Widely expressed. Expressed in adult and fetal heart, brain, lung, liver, skeletal muscle and

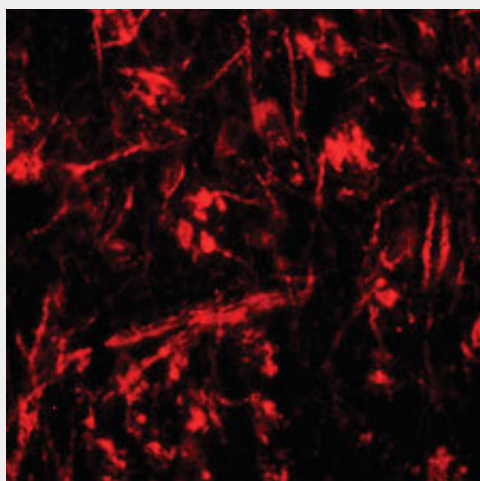
kidney. Expressed in adult pancreas and placenta and in fetal spleen and thymus. Expressed at intermediate level in pancreas, placenta and brain but low in skeletal muscle and lung.

ORMDL1 Antibody - Protocols

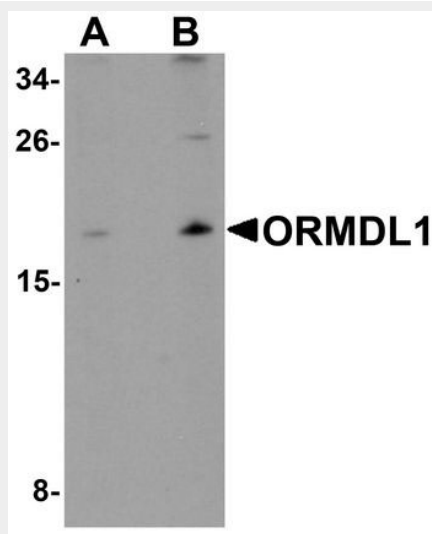
Provided below are standard protocols that you may find useful for product applications.

- [Western Blot](#)
- [Blocking Peptides](#)
- [Dot Blot](#)
- [Immunohistochemistry](#)
- [Immunofluorescence](#)
- [Immunoprecipitation](#)
- [Flow Cytometry](#)
- [Cell Culture](#)

ORMDL1 Antibody - Images



Immunofluorescence of ORMDL1 in mouse brain tissue with ORMDL1 antibody at 20 ug/ml.



Western blot analysis of ORMDL1 in SK-N-SH Cell lysate with ORMDL1 antibody at (A) 1 ug/ml and...

ORMDL1 Antibody - Background

Negative regulator of sphingolipid synthesis.

ORMDL1 Antibody - References

Hjelmqvist L.,et al.Genome Biol. 3:RESEARCH0027.1-RESEARCH0027.13(2002).
Araki W.,et al.FASEB J. 22:819-827(2008).
Zhang Q.-H.,et al.Genome Res. 10:1546-1560(2000).
Ota T.,et al.Nat. Genet. 36:40-45(2004).
Bechtel S.,et al.BMC Genomics 8:399-399(2007).