

**TCF7L2 / TCG4 Antibody (N-Terminus)**  
**Rabbit Polyclonal Antibody**  
**Catalog # ALS14834****Specification**

---

**TCF7L2 / TCG4 Antibody (N-Terminus) - Product Information**

Application	WB, IHC-P, E
Primary Accession	<a href="#">O9NOB0</a>
Reactivity	Human, Mouse, Rat
Host	Rabbit
Clonality	Polyclonal
Calculated MW	68kDa KDa
Dilution	WB~~1:1000 IHC-P~~N/A E~~N/A

**TCF7L2 / TCG4 Antibody (N-Terminus) - Additional Information****Gene ID** 6934**Other Names**

Transcription factor 7-like 2, HMG box transcription factor 4, T-cell-specific transcription factor 4, T-cell factor 4, TCF-4, hTCF-4, TCF7L2, TCF4

**Reconstitution & Storage**

Short term 4°C, long term aliquot and store at -20°C, avoid freeze thaw cycles.

**Precautions**

TCF7L2 / TCG4 Antibody (N-Terminus) is for research use only and not for use in diagnostic or therapeutic procedures.

**TCF7L2 / TCG4 Antibody (N-Terminus) - Protein Information****Name** TCF7L2**Synonyms** TCF4**Function**

Participates in the Wnt signaling pathway and modulates MYC expression by binding to its promoter in a sequence-specific manner. Acts as a repressor in the absence of CTNNB1, and as activator in its presence. Activates transcription from promoters with several copies of the Tcf motif 5'-CCTTTGATC-3' in the presence of CTNNB1. TLE1, TLE2, TLE3 and TLE4 repress transactivation mediated by TCF7L2/TCF4 and CTNNB1. Expression of dominant-negative mutants results in cell-cycle arrest in G1. Necessary for the maintenance of the epithelial stem-cell compartment of the small intestine.

**Cellular Location**

Nucleus, PML body. Nucleus. Note=Diffuse pattern. Colocalizes with SUMO1 and PIAS4 in a subset

of PML (promyelocytic leukemia) nuclear bodies

#### **Tissue Location**

Detected in epithelium from small intestine, with the highest expression at the top of the crypts and a gradient of expression from crypt to villus. Detected in colon epithelium and colon cancer, and in epithelium from mammary gland and carcinomas derived therefrom.

#### **Volume**

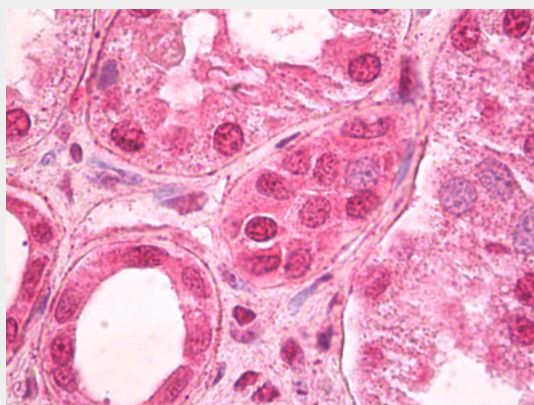
50 µl

#### **TCF7L2 / TCG4 Antibody (N-Terminus) - Protocols**

Provided below are standard protocols that you may find useful for product applications.

- [Western Blot](#)
- [Blocking Peptides](#)
- [Dot Blot](#)
- [Immunohistochemistry](#)
- [Immunofluorescence](#)
- [Immunoprecipitation](#)
- [Flow Cytometry](#)
- [Cell Culture](#)

#### **TCF7L2 / TCG4 Antibody (N-Terminus) - Images**



Anti-TCF7L2 antibody IHC of human kidney.

#### **TCF7L2 / TCG4 Antibody (N-Terminus) - Background**

Participates in the Wnt signaling pathway and modulates MYC expression by binding to its promoter in a sequence-specific manner. Acts as repressor in the absence of CTNNB1, and as activator in its presence. Activates transcription from promoters with several copies of the Tcf motif 5'-CCTTTGATC-3' in the presence of CTNNB1. TLE1, TLE2, TLE3 and TLE4 repress transactivation mediated by TCF7L2/TCF4 and CTNNB1. Expression of dominant-negative mutants results in cell-cycle arrest in G1. Necessary for the maintenance of the epithelial stem-cell compartment of the small intestine.

#### **TCF7L2 / TCG4 Antibody (N-Terminus) - References**

Korinek V., et al. Science 275:1784-1787(1997).  
Duval A., et al. Cancer Res. 60:3872-3879(2000).

Prokunina-Olsson L., et al. Hum. Mol. Genet. 18:3795-3804(2009).  
Tsedensodnom O., et al. Exp. Cell Res. 317:920-931(2011).  
Iseki H., et al. Submitted (JUN-2008) to the EMBL/GenBank/DDBJ databases.