

PPP1R10 / PNUTS Antibody
Rabbit Polyclonal Antibody
Catalog # ALS14835**Specification**

PPP1R10 / PNUTS Antibody - Product Information

Application	WB
Primary Accession	Q96QC0
Reactivity	Human, Rat
Host	Rabbit
Clonality	Polyclonal
Calculated MW	99kDa KDa

PPP1R10 / PNUTS Antibody - Additional Information**Gene ID** 5514**Other Names**

Serine/threonine-protein phosphatase 1 regulatory subunit 10, MHC class I region proline-rich protein CAT53, PP1-binding protein of 114 kDa, Phosphatase 1 nuclear targeting subunit, Protein FB19, p99, PPP1R10, CAT53, FB19, PNUTS

Reconstitution & Storage

Short term 4°C, long term aliquot and store at -20°C, avoid freeze thaw cycles.

Precautions

PPP1R10 / PNUTS Antibody is for research use only and not for use in diagnostic or therapeutic procedures.

PPP1R10 / PNUTS Antibody - Protein Information**Name** PPP1R10**Synonyms** CAT53, FB19, PNUTS**Function**

Scaffold protein which mediates the formation of the PTW/PP1 phosphatase complex by providing a binding platform to each component of the complex. The PTW/PP1 phosphatase complex plays a role in the control of chromatin structure and cell cycle progression during the transition from mitosis into interphase. Mediates interaction of WDR82 and PPP1CA. Inhibitor of PPP1CA and PPP1CC phosphatase activities. Has inhibitory activity on PPP1CA only when phosphorylated. Binds to mRNA, single-stranded DNA (ssDNA), poly(A) and poly(G) homopolymers (By similarity).

Cellular Location

Nucleus {ECO:0000255|PROSITE-ProRule:PRU00649, ECO:0000269|PubMed:9450550}.

Note=Found in discrete nucleoplasmic bodies and within nucleoli. Associates with chromatin during interphase, excluded from condensed chromosomes during early mitosis and is reloaded onto chromosomes at the late telophase (By similarity)

Tissue Location

Expressed in heart, brain, placenta, lung, liver, skeletal muscle, kidney and pancreas.

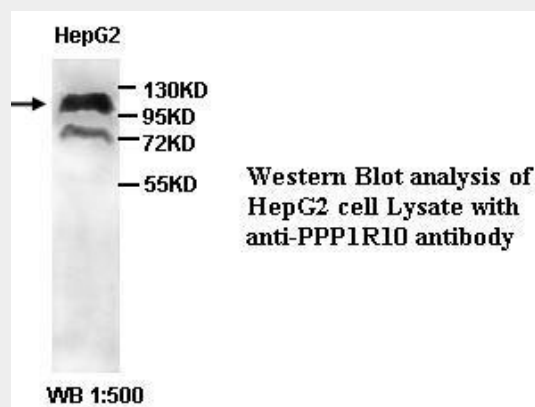
Volume

50 µl

PPP1R10 / PNUTS Antibody - Protocols

Provided below are standard protocols that you may find useful for product applications.

- [Western Blot](#)
- [Blocking Peptides](#)
- [Dot Blot](#)
- [Immunohistochemistry](#)
- [Immunofluorescence](#)
- [Immunoprecipitation](#)
- [Flow Cytometry](#)
- [Cell Culture](#)

PPP1R10 / PNUTS Antibody - Images

0

PPP1R10 / PNUTS Antibody - Background

Scaffold protein which mediates the formation of the PTW/PP1 phosphatase complex by providing a binding platform to each component of the complex. The PTW/PP1 phosphatase complex plays a role in the control of chromatin structure and cell cycle progression during the transition from mitosis into interphase. Mediates interaction of WDR82 and PPP1CA. Inhibitor of PPP1CA and PPP1CC phosphatase activities. Has inhibitory activity on PPP1CA only when phosphorylated. Binds to mRNA, single-stranded DNA (ssDNA), poly(A) and poly(G) homopolymers (By similarity).

PPP1R10 / PNUTS Antibody - References

Totaro A., et al. Biochem. Biophys. Res. Commun. 250:555-557(1998).
Raha-Chowdhury R., et al. Submitted (FEB-2003) to the EMBL/GenBank/DDBJ databases.
Shiina S., et al. Submitted (DEC-2004) to the EMBL/GenBank/DDBJ databases.
Shiina T., et al. Submitted (JUL-2002) to the EMBL/GenBank/DDBJ databases.
Mungall A.J., et al. Nature 425:805-811(2003).