

NCK1 / NCK Antibody (clone 11D10)
Mouse Monoclonal Antibody
Catalog # ALS14842**Specification**

NCK1 / NCK Antibody (clone 11D10) - Product Information

Application	WB, IHC-P, E
Primary Accession	P16333
Reactivity	Human, Mouse, Rat
Host	Mouse
Clonality	Monoclonal
Calculated MW	43kDa KDa
Dilution	WB~~1:1000 IHC-P~~N/A E~~N/A

NCK1 / NCK Antibody (clone 11D10) - Additional Information**Gene ID** 4690**Other Names**

Cytoplasmic protein NCK1, NCK adaptor protein 1, Nck-1, SH2/SH3 adaptor protein NCK-alpha, NCK1, NCK

Reconstitution & Storage

Short term 4°C, long term aliquot and store at -20°C, avoid freeze thaw cycles.

Precautions

NCK1 / NCK Antibody (clone 11D10) is for research use only and not for use in diagnostic or therapeutic procedures.

NCK1 / NCK Antibody (clone 11D10) - Protein Information**Name** NCK1**Synonyms** NCK**Function**

Adapter protein which associates with tyrosine-phosphorylated growth factor receptors, such as KDR and PDGFRB, or their cellular substrates. Maintains low levels of EIF2S1 phosphorylation by promoting its dephosphorylation by PP1. Plays a role in the DNA damage response, not in the detection of the damage by ATM/ATR, but for efficient activation of downstream effectors, such as that of CHEK2. Plays a role in ELK1-dependent transcriptional activation in response to activated Ras signaling. Modulates the activation of EIF2AK2/PKR by dsRNA. May play a role in cell adhesion and migration through interaction with ephrin receptors.

Cellular Location

Cytoplasm. Endoplasmic reticulum. Nucleus. Note=Mostly cytoplasmic, but shuttles between the

cytoplasm and the nucleus. Import into the nucleus requires the interaction with SOCS7
Predominantly nuclear following genotoxic stresses, such as UV irradiation, hydroxyurea or mitomycin C treatments

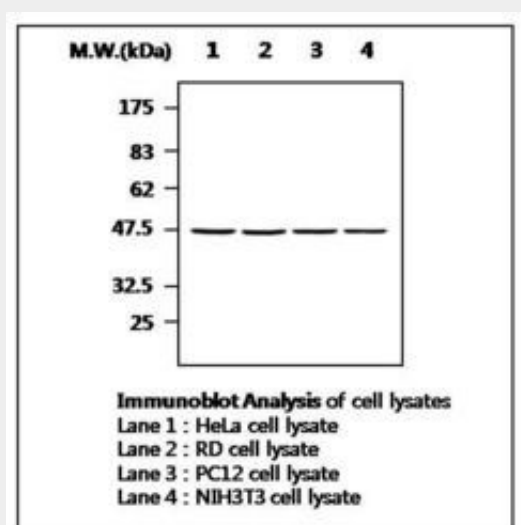
Volume
50 μ l

NCK1 / NCK Antibody (clone 11D10) - Protocols

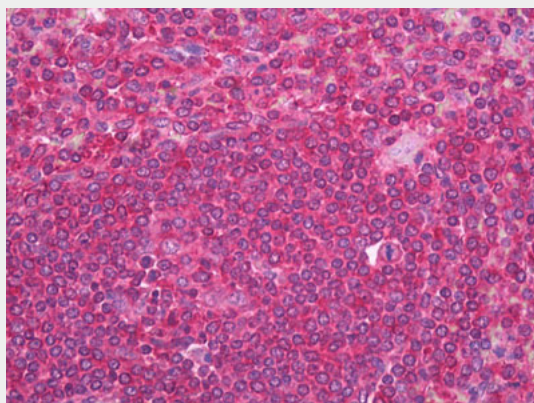
Provided below are standard protocols that you may find useful for product applications.

- [Western Blot](#)
- [Blocking Peptides](#)
- [Dot Blot](#)
- [Immunohistochemistry](#)
- [Immunofluorescence](#)
- [Immunoprecipitation](#)
- [Flow Cytometry](#)
- [Cell Culture](#)

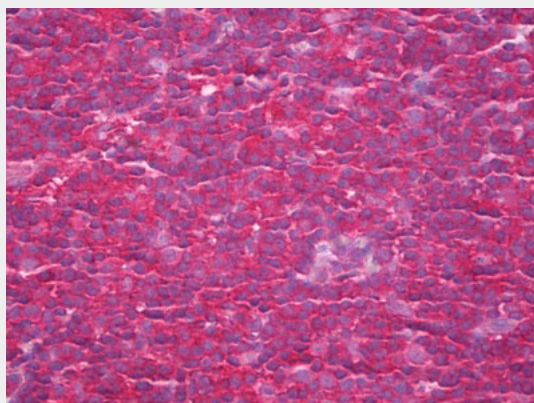
NCK1 / NCK Antibody (clone 11D10) - Images



0



Anti-NCK1 antibody IHC of human spleen.



Anti-NCK1 antibody IHC of human tonsil.

NCK1 / NCK Antibody (clone 11D10) - Background

Adapter protein which associates with tyrosine- phosphorylated growth factor receptors, such as KDR and PDGFRB, or their cellular substrates. Maintains low levels of EIF2S1 phosphorylation by promoting its dephosphorylation by PP1. Plays a role in the DNA damage response, not in the detection of the damage by ATM/ATR, but for efficient activation of downstream effectors, such as that of CHEK2. Plays a role in ELK1-dependent transcriptional activation in response to activated Ras signaling. Modulates the activation of EIF2AK2/PKR by dsRNA. May play a role in cell adhesion and migration through interaction with ephrin receptors.

NCK1 / NCK Antibody (clone 11D10) - References

Lehmann J.M.,et al.Nucleic Acids Res. 18:1048-1048(1990).
Ota T.,et al.Nat. Genet. 36:40-45(2004).
Muzny D.M.,et al.Nature 440:1194-1198(2006).
Mural R.J.,et al.Submitted (SEP-2005) to the EMBL/GenBank/DDBJ databases.
Park D.,et al.Mol. Cell. Biol. 12:5816-5823(1992).