

Ferritin Heavy Chain / FTH1 Antibody (clone 3F8)
Mouse Monoclonal Antibody
Catalog # ALS14843**Specification**

Ferritin Heavy Chain / FTH1 Antibody (clone 3F8) - Product Information

Application	WB, IHC-P, E
Primary Accession	P02794
Reactivity	Human
Host	Mouse
Clonality	Monoclonal
Calculated MW	21kDa KDa
Dilution	WB~~1:1000 IHC-P~~N/A E~~N/A

Ferritin Heavy Chain / FTH1 Antibody (clone 3F8) - Additional Information**Gene ID** 2495**Other Names**

Ferritin heavy chain, Ferritin H subunit, 1.16.3.1, Cell proliferation-inducing gene 15 protein, Ferritin heavy chain, N-terminally processed, FTH1, FTH, FTHL6

Reconstitution & Storage

Short term 4°C, long term aliquot and store at -20°C, avoid freeze thaw cycles.

Precautions

Ferritin Heavy Chain / FTH1 Antibody (clone 3F8) is for research use only and not for use in diagnostic or therapeutic procedures.

Ferritin Heavy Chain / FTH1 Antibody (clone 3F8) - Protein Information**Name** FTH1**Synonyms** FTH, FTHL6**Function**

Stores iron in a soluble, non-toxic, readily available form. Important for iron homeostasis. Has ferroxidase activity (PubMed:9003196). Iron is taken up in the ferrous form and deposited as ferric hydroxides after oxidation (PubMed:9003196). Also plays a role in delivery of iron to cells (By similarity). Mediates iron uptake in capsule cells of the developing kidney (By similarity). Delivery to lysosomes is mediated by the cargo receptor NCOA4 for autophagic degradation and release of iron (PubMed:24695223, PubMed:26436293).

Cellular Location

Cytoplasm. Lysosome. Cytoplasmic vesicle, autophagosome

Tissue Location

Expressed in the liver.

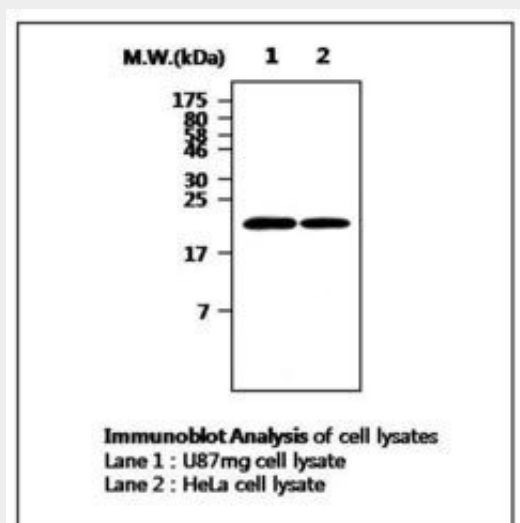
Volume

50 μ l

Ferritin Heavy Chain / FTH1 Antibody (clone 3F8) - Protocols

Provided below are standard protocols that you may find useful for product applications.

- [Western Blot](#)
- [Blocking Peptides](#)
- [Dot Blot](#)
- [Immunohistochemistry](#)
- [Immunofluorescence](#)
- [Immunoprecipitation](#)
- [Flow Cytometry](#)
- [Cell Culture](#)

Ferritin Heavy Chain / FTH1 Antibody (clone 3F8) - Images

0

Ferritin Heavy Chain / FTH1 Antibody (clone 3F8) - Background

Stores iron in a soluble, non-toxic, readily available form. Important for iron homeostasis. Has ferroxidase activity. Iron is taken up in the ferrous form and deposited as ferric hydroxides after oxidation. Also plays a role in delivery of iron to cells. Mediates iron uptake in capsule cells of the developing kidney (By similarity).

Ferritin Heavy Chain / FTH1 Antibody (clone 3F8) - References

Costanzo F., et al. EMBO J. 3:23-27(1984).
Boyd D., et al. J. Biol. Chem. 260:11755-11761(1985).
Chou C.-C., et al. Mol. Cell. Biol. 6:566-573(1986).

Costanzo F., et al. Nucleic Acids Res. 14:721-736(1986).

Hentze M.W., et al. Proc. Natl. Acad. Sci. U.S.A. 83:7226-7230(1986).