

ACTG1 / Gamma Actin Antibody (clone 2A3)
Mouse Monoclonal Antibody
Catalog # ALS14863**Specification**

ACTG1 / Gamma Actin Antibody (clone 2A3) - Product Information

Application	WB, IHC-P, E, IHC-F, FC
Primary Accession	P63261
Reactivity	Human, Mouse, Rat, Rabbit, Pig, Chicken
Host	Mouse
Clonality	Monoclonal
Calculated MW	42kDa KDa
Dilution	WB~~1:1000 IHC-P~~N/A E~~N/A IHC-F~~N/A FC~~1:10~50

ACTG1 / Gamma Actin Antibody (clone 2A3) - Additional Information**Gene ID** 71**Other Names**

Actin, cytoplasmic 2, Gamma-actin, Actin, cytoplasmic 2, N-terminally processed, ACTG1, ACTG

Target/Specificity

Does not cross react with other actin isoforms. Reacts with human, pig, rabbit, rat, mouse and chicken. The epitope recognized is highly conserved and the antibody is therefore expected to react with many other species.

Reconstitution & Storage

Long term: -20°C; Short term: +4°C. Avoid repeat freeze-thaw cycles.

Precautions

ACTG1 / Gamma Actin Antibody (clone 2A3) is for research use only and not for use in diagnostic or therapeutic procedures.

ACTG1 / Gamma Actin Antibody (clone 2A3) - Protein Information**Name** ACTG1**Synonyms** ACTG**Function**

Actins are highly conserved proteins that are involved in various types of cell motility and are ubiquitously expressed in all eukaryotic cells. May play a role in the repair of noise-induced stereocilia gaps thereby maintains hearing sensitivity following loud noise damage (By similarity).

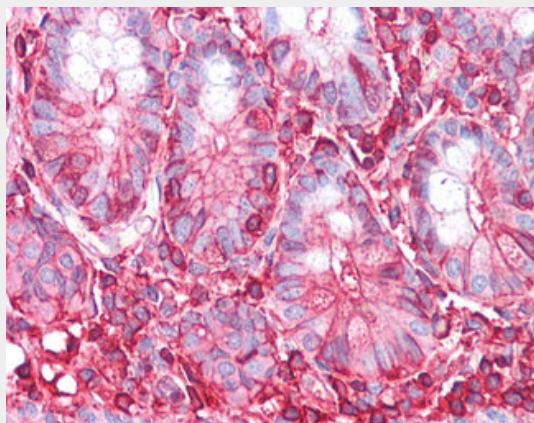
Cellular Location

Cytoplasm, cytoskeleton

ACTG1 / Gamma Actin Antibody (clone 2A3) - Protocols

Provided below are standard protocols that you may find useful for product applications.

- [Western Blot](#)
- [Blocking Peptides](#)
- [Dot Blot](#)
- [Immunohistochemistry](#)
- [Immunofluorescence](#)
- [Immunoprecipitation](#)
- [Flow Cytometry](#)
- [Cell Culture](#)

ACTG1 / Gamma Actin Antibody (clone 2A3) - Images

Anti-ACTG1 / Gamma-Actin antibody IHC of human small intestine.

ACTG1 / Gamma Actin Antibody (clone 2A3) - Background

Actins are highly conserved proteins that are involved in various types of cell motility and are ubiquitously expressed in all eukaryotic cells.

ACTG1 / Gamma Actin Antibody (clone 2A3) - References

- Erba H.P., et al. Nucleic Acids Res. 14:5275-5294(1986).
Erba H.P., et al. Mol. Cell. Biol. 8:1775-1789(1988).
Ota T., et al. Nat. Genet. 36:40-45(2004).
Kalnina N., et al. Submitted (OCT-2004) to the EMBL/GenBank/DDBJ databases.
Gevaert K., et al. Nat. Biotechnol. 21:566-569(2003).