

**KRT18 / CK18 / Cytokeratin 18 Antibody (clone RCK106)**  
**Mouse Monoclonal Antibody**  
**Catalog # ALS14872****Specification**

---

**KRT18 / CK18 / Cytokeratin 18 Antibody (clone RCK106) - Product Information**

Application	WB, IHC-P, ICC, IHC-F, FC
Primary Accession	<a href="#">P05783</a>
Reactivity	Human
Host	Mouse
Clonality	Monoclonal
Calculated MW	48kDa KDa
Dilution	WB~~1:1000 IHC-P~~N/A ICC~~N/A IHC-F~~N/A FC~~1:10~50

**KRT18 / CK18 / Cytokeratin 18 Antibody (clone RCK106) - Additional Information****Gene ID** 3875**Other Names**

Keratin, type I cytoskeletal 18, Cell proliferation-inducing gene 46 protein, Cytokeratin-18, CK-18, Keratin-18, K18, KRT18, CYK18

**Target/Specificity**

Reacts exclusively with cytokeratin 18 in glandular epithelial cells of the digestive, respiratory, and urogenital tracts, endocrine and exocrine cells and mesothelial cells, as well as adenocarcinomas originating from them. Reacts exclusively with human.

**Reconstitution & Storage**

Short term 4°C, long term aliquot and store at -20°C, avoid freeze thaw cycles. Store undiluted.

**Precautions**

KRT18 / CK18 / Cytokeratin 18 Antibody (clone RCK106) is for research use only and not for use in diagnostic or therapeutic procedures.

**KRT18 / CK18 / Cytokeratin 18 Antibody (clone RCK106) - Protein Information****Name** KRT18**Synonyms** CYK18**Function**

Involved in the uptake of thrombin-antithrombin complexes by hepatic cells (By similarity). When phosphorylated, plays a role in filament reorganization. Involved in the delivery of mutated CFTR to the plasma membrane. Together with KRT8, is involved in interleukin-6 (IL-6)-mediated barrier

protection.

#### **Cellular Location**

Nucleus matrix {ECO:0000250|UniProtKB:Q5BJY9}. Cytoplasm, perinuclear region. Nucleus, nucleolus. Cytoplasm {ECO:0000250|UniProtKB:Q5BJY9}

#### **Tissue Location**

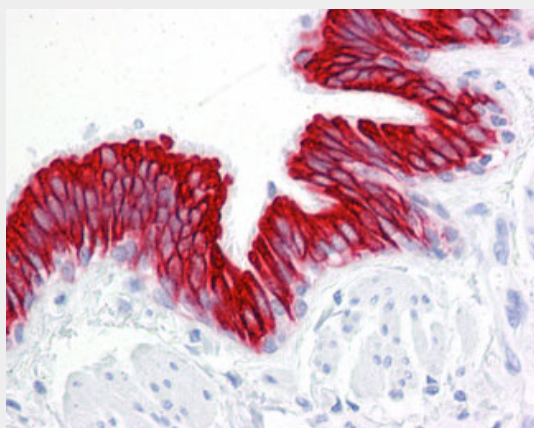
Expressed in colon, placenta, liver and very weakly in exocervix. Increased expression observed in lymph nodes of breast carcinoma.

### **KRT18 / CK18 / Cytokeratin 18 Antibody (clone RCK106) - Protocols**

Provided below are standard protocols that you may find useful for product applications.

- [Western Blot](#)
- [Blocking Peptides](#)
- [Dot Blot](#)
- [Immunohistochemistry](#)
- [Immunofluorescence](#)
- [Immunoprecipitation](#)
- [Flow Cytometry](#)
- [Cell Culture](#)

### **KRT18 / CK18 / Cytokeratin 18 Antibody (clone RCK106) - Images**



Anti-KRT18 / Cytokeratin 18 antibody IHC of human lung, respiratory epithelium.

### **KRT18 / CK18 / Cytokeratin 18 Antibody (clone RCK106) - Background**

Involved in the uptake of thrombin-antithrombin complexes by hepatic cells (By similarity). When phosphorylated, plays a role in filament reorganization. Involved in the delivery of mutated CFTR to the plasma membrane. Together with KRT8, is involved in interleukin-6 (IL-6)-mediated barrier protection.

### **KRT18 / CK18 / Cytokeratin 18 Antibody (clone RCK106) - References**

Oshima R.G.,et al.Differentiation 33:61-68(1986).  
Kim J.W.,et al.Submitted (SEP-2004) to the EMBL/GenBank/DDBJ databases.  
Kalnine N.,et al.Submitted (OCT-2004) to the EMBL/GenBank/DDBJ databases.  
Suzuki Y.,et al.Submitted (APR-2005) to the EMBL/GenBank/DDBJ databases.  
Kulesh D.A.,et al.Mol. Cell. Biol. 8:1540-1550(1988).

