

EMA / MUC1 Antibody (clone GP1.4)
Mouse Monoclonal Antibody
Catalog # ALS14876**Specification**

EMA / MUC1 Antibody (clone GP1.4) - Product Information

Application	WB, IHC-P, ICC, IHC-F, FC
Primary Accession	P15941
Reactivity	Human
Host	Mouse
Clonality	Monoclonal
Calculated MW	122kDa KDa
Dilution	WB~~1:1000 IHC-P~~N/A ICC~~N/A IHC-F~~N/A FC~~1:10~50

EMA / MUC1 Antibody (clone GP1.4) - Additional Information**Gene ID** 4582**Other Names**

Mucin-1, MUC-1, Breast carcinoma-associated antigen DF3, Cancer antigen 15-3, CA 15-3, Carcinoma-associated mucin, Episialin, H23AG, Krebs von den Lungen-6, KL-6, PEMT, Peanut-reactive urinary mucin, PUM, Polymorphic epithelial mucin, PEM, Tumor-associated epithelial membrane antigen, EMA, Tumor-associated mucin, CD227, Mucin-1 subunit alpha, MUC1-NT, MUC1-alpha, Mucin-1 subunit beta, MUC1-beta, MUC1-CT, MUC1, PUM

Target/Specificity

Reacts with all glycoforms of Episialin.

Reconstitution & Storage

Short term 4°C, long term aliquot and store at -20°C, avoid freeze thaw cycles. Store undiluted.

Precautions

EMA / MUC1 Antibody (clone GP1.4) is for research use only and not for use in diagnostic or therapeutic procedures.

EMA / MUC1 Antibody (clone GP1.4) - Protein Information**Name** MUC1**Synonyms** PUM**Function**

The alpha subunit has cell adhesive properties. Can act both as an adhesion and an anti-adhesion protein. May provide a protective layer on epithelial cells against bacterial and enzyme attack.

Cellular Location

Apical cell membrane; Single-pass type I membrane protein. Note=Exclusively located in the apical domain of the plasma membrane of highly polarized epithelial cells After endocytosis, internalized and recycled to the cell membrane Located to microvilli and to the tips of long filopodial protusions [Isoform Y]: Secreted. [Mucin-1 subunit beta]: Cell membrane. Cytoplasm. Nucleus. Note=On EGF and PDGFRB stimulation, transported to the nucleus through interaction with CTNNB1, a process which is stimulated by phosphorylation. On HRG stimulation, colocalizes with JUP/gamma-catenin at the nucleus

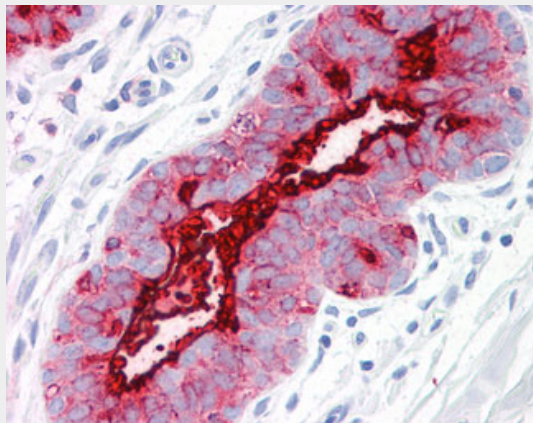
Tissue Location

Expressed on the apical surface of epithelial cells, especially of airway passages, breast and uterus. Also expressed in activated and unactivated T-cells. Overexpressed in epithelial tumors, such as breast or ovarian cancer and also in non-epithelial tumor cells. Isoform Y is expressed in tumor cells only

EMA / MUC1 Antibody (clone GP1.4) - Protocols

Provided below are standard protocols that you may find useful for product applications.

- [Western Blot](#)
- [Blocking Peptides](#)
- [Dot Blot](#)
- [Immunohistochemistry](#)
- [Immunofluorescence](#)
- [Immunoprecipitation](#)
- [Flow Cytometry](#)
- [Cell Culture](#)

EMA / MUC1 Antibody (clone GP1.4) - Images

Anti-MUC1 antibody IHC of human breast.

EMA / MUC1 Antibody (clone GP1.4) - Background

The alpha subunit has cell adhesive properties. Can act both as an adhesion and an anti-adhesion protein. May provide a protective layer on epithelial cells against bacterial and enzyme attack.

EMA / MUC1 Antibody (clone GP1.4) - References

Lan M.S.,et al.J. Biol. Chem. 265:15294-15299(1990).
Ligtenberg M.J.L.,et al.J. Biol. Chem. 265:5573-5578(1990).

Gendler S.J., et al. J. Biol. Chem. 265:15286-15293(1990).
Lancaster C.A., et al. Biochem. Biophys. Res. Commun. 173:1019-1029(1990).
Wreschner D.H., et al. Eur. J. Biochem. 189:463-473(1990).