

**NEFH / NF-H Antibody (clone RNF405)**  
**Mouse Monoclonal Antibody**  
**Catalog # ALS14880****Specification**

---

**NEFH / NF-H Antibody (clone RNF405) - Product Information**

Application	WB, IHC-P, IHC-F
Primary Accession	<a href="#">P12036</a>
Reactivity	Human, Mouse, Rat, Rabbit, Hamster, Monkey, Chicken, Sheep, Xenopus, Bovine, Guinea Pig, Dog
Host	Mouse
Clonality	Monoclonal
Calculated MW	112kDa KDa
Dilution	WB~~1:1000 IHC-P~~N/A IHC-F~~N/A

**NEFH / NF-H Antibody (clone RNF405) - Additional Information****Gene ID** 4744**Other Names**

Neurofilament heavy polypeptide, NF-H, 200 kDa neurofilament protein, Neurofilament triplet H protein, NEFH, KIAA0845, NFH

**Target/Specificity**

Reacts exclusively with the phosphorylated isoform of the 200 kD neurofilament protein.

**Reconstitution & Storage**

Short term 4°C, long term aliquot and store at -20°C, avoid freeze thaw cycles. Store undiluted.

**Precautions**

NEFH / NF-H Antibody (clone RNF405) is for research use only and not for use in diagnostic or therapeutic procedures.

**NEFH / NF-H Antibody (clone RNF405) - Protein Information****Name** NEFH**Synonyms** KIAA0845, NFH**Function**

Neurofilaments usually contain three intermediate filament proteins: NEFL, NEFM, and NEFH which are involved in the maintenance of neuronal caliber. NEFH has an important function in mature axons that is not subserved by the two smaller NF proteins. May additionally cooperate with the neuronal intermediate filament proteins PRPH and INA to form neuronal filamentous networks (By similarity).

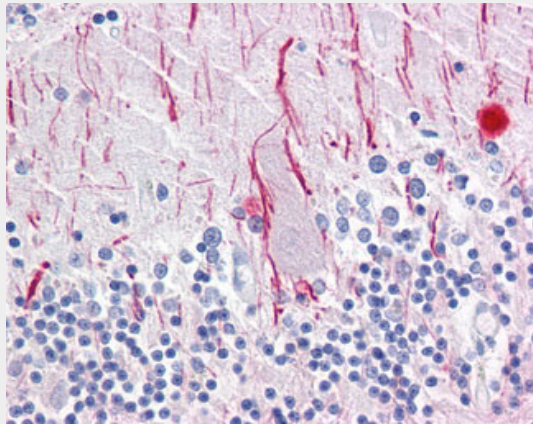
**Cellular Location**

Cytoplasm, cytoskeleton. Cell projection, axon {ECO:0000250|UniProtKB:P19246}

**NEFH / NF-H Antibody (clone RNF405) - Protocols**

Provided below are standard protocols that you may find useful for product applications.

- [Western Blot](#)
- [Blocking Peptides](#)
- [Dot Blot](#)
- [Immunohistochemistry](#)
- [Immunofluorescence](#)
- [Immunoprecipitation](#)
- [Flow Cytometry](#)
- [Cell Culture](#)

**NEFH / NF-H Antibody (clone RNF405) - Images**

Anti-NEFH antibody IHC of human brain, cerebellum.

**NEFH / NF-H Antibody (clone RNF405) - Background**

Neurofilaments usually contain three intermediate filament proteins: L, M, and H which are involved in the maintenance of neuronal caliber. NF-H has an important function in mature axons that is not subserved by the two smaller NF proteins.

**NEFH / NF-H Antibody (clone RNF405) - References**

- Lees J.F., et al. EMBO J. 7:1947-1955(1988).  
Zhu Y., et al. Beijing Yi Ke Da Xue Xue Bao 31:531-531(1999).  
Nagase T., et al. DNA Res. 5:355-364(1998).  
Ota T., et al. Nat. Genet. 36:40-45(2004).  
Dunham I., et al. Nature 402:489-495(1999).