

RGS19 Antibody (aa1-50)
Rabbit Polyclonal Antibody
Catalog # ALS14888**Specification**

RGS19 Antibody (aa1-50) - Product Information

Application	WB
Primary Accession	P49795
Reactivity	Human, Mouse
Host	Rabbit
Clonality	Polyclonal
Calculated MW	25kDa KDa

RGS19 Antibody (aa1-50) - Additional Information**Gene ID** 10287**Other Names**

Regulator of G-protein signaling 19, RGS19, G-alpha-interacting protein, GAIP, RGS19, GAIP, GNAI3IP

Target/Specificity

Human RGS19

Reconstitution & Storage

Store at 4°C, stable for 6 months. For long term storage, aliquot and store at -20°C.

Precautions

RGS19 Antibody (aa1-50) is for research use only and not for use in diagnostic or therapeutic procedures.

RGS19 Antibody (aa1-50) - Protein Information**Name** RGS19**Synonyms** GAIP, GNAI3IP**Function**

Inhibits signal transduction by increasing the GTPase activity of G protein alpha subunits thereby driving them into their inactive GDP-bound form. Binds to G-alpha subfamily 1 members, with the order G(i)a3 > G(i)a1 > G(o)a >> G(z)a/G(i)a2. Activity on G(z)-alpha is inhibited by phosphorylation and palmitoylation of the G-protein.

Cellular Location

Membrane; Lipid-anchor.

Tissue Location

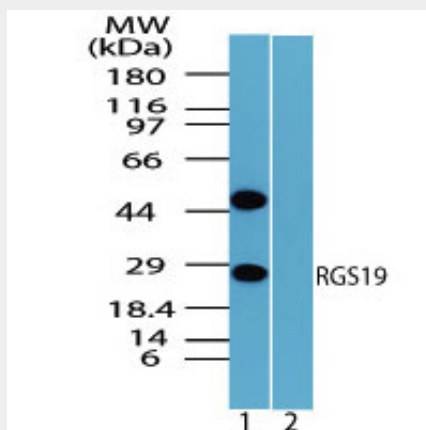
Highest expression in lung. Placenta, liver and heart also express high levels of GAIP

RGS19 Antibody (aa1-50) - Protocols

Provided below are standard protocols that you may find useful for product applications.

- [Western Blot](#)
- [Blocking Peptides](#)
- [Dot Blot](#)
- [Immunohistochemistry](#)
- [Immunofluorescence](#)
- [Immunoprecipitation](#)
- [Flow Cytometry](#)
- [Cell Culture](#)

RGS19 Antibody (aa1-50) - Images



Western blot of RGS19 in mouse placenta lysate in the 1) absence and 2) presence of immunizing...

RGS19 Antibody (aa1-50) - Background

Inhibits signal transduction by increasing the GTPase activity of G protein alpha subunits thereby driving them into their inactive GDP-bound form. Binds to G-alpha subfamily 1 members, with the order G(i)a3 > G(i)a1 > G(o)a >> G(z)a/G(i)a2. Activity on G(z)-alpha is inhibited by phosphorylation and palmitoylation of the G-protein.

RGS19 Antibody (aa1-50) - References

de Vries L., et al. Proc. Natl. Acad. Sci. U.S.A. 92:11916-11920(1995).
Puhl H.L. III, et al. Submitted (MAR-2004) to the EMBL/GenBank/DDBJ databases.
Kalnine N., et al. Submitted (AUG-2003) to the EMBL/GenBank/DDBJ databases.
Ota T., et al. Nat. Genet. 36:40-45(2004).
Deloukas P., et al. Nature 414:865-871(2001).