

**SNX2 Antibody (aa350-400)**  
**Rabbit Polyclonal Antibody**  
**Catalog # ALS14899****Specification**

---

**SNX2 Antibody (aa350-400) - Product Information**

Application	WB
Primary Accession	<a href="#">O60749</a>
Reactivity	Human, Mouse, Opossum, Horse, Bovine, Dog
Host	Rabbit
Clonality	Polyclonal
Calculated MW	58kDa KDa

**SNX2 Antibody (aa350-400) - Additional Information****Gene ID** 6643**Other Names**

Sorting nexin-2, Transformation-related gene 9 protein, TRG-9, SNX2

**Target/Specificity**

Human SNX2

**Reconstitution & Storage**

Store at 4°C for short term applications. For long term storage, aliquot and store at -20°C.

**Precautions**

SNX2 Antibody (aa350-400) is for research use only and not for use in diagnostic or therapeutic procedures.

**SNX2 Antibody (aa350-400) - Protein Information****Name** SNX2**Function**

Involved in several stages of intracellular trafficking. Interacts with membranes containing phosphatidylinositol 3-phosphate (PtdIns(3P)) or phosphatidylinositol 3,5-bisphosphate (PtdIns(3,5)P2) (PubMed:<a href="http://www.uniprot.org/citations/16179610" target="\_blank">16179610</a>). Acts in part as component of the retromer membrane-deforming SNX-BAR subcomplex (PubMed:<a href="http://www.uniprot.org/citations/17101778" target="\_blank">17101778</a>). The SNX-BAR retromer mediates retrograde transport of cargo proteins from endosomes to the trans-Golgi network (TGN) and is involved in endosome-to-plasma membrane transport for cargo protein recycling. The SNX-BAR subcomplex functions to deform the donor membrane into a tubular profile called endosome-to-TGN transport carrier (ETC) (Probable). Can sense membrane curvature and has in vitro vesicle-to-membrane remodeling activity (PubMed:<a href="http://www.uniprot.org/citations/23085988" target="\_blank">23085988</a>). Required for retrograde endosome-to-TGN transport of TGN38 (PubMed:<a href="http://www.uniprot.org/citations/16179610" target="\_blank">16179610</a>).

href="http://www.uniprot.org/citations/20138391" target="\_blank">20138391</a>). Promotes KALRN- and RHOG-dependent but retromer-independent membrane remodeling such as lamellipodium formation; the function is dependent on GEF activity of KALRN (PubMed:<a href="http://www.uniprot.org/citations/20604901" target="\_blank">20604901</a>).

### Cellular Location

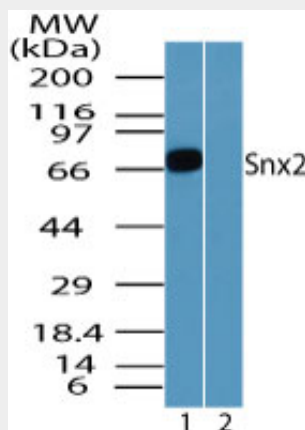
Early endosome membrane; Peripheral membrane protein; Cytoplasmic side. Cell projection, lamellipodium Note=Colocalized with SORT1 to tubular endosomal membrane structures called endosome-to-TGN transport carriers (ETCs) which are budding from early endosome vacuoles just before maturing into late endosome vacuoles (PubMed:18088323). Colocalized with F-actin at the leading edge of lamellipodia in cells in a KALRN-dependent manner (PubMed:20604901).

### SNX2 Antibody (aa350-400) - Protocols

Provided below are standard protocols that you may find useful for product applications.

- [Western Blot](#)
- [Blocking Peptides](#)
- [Dot Blot](#)
- [Immunohistochemistry](#)
- [Immunofluorescence](#)
- [Immunoprecipitation](#)
- [Flow Cytometry](#)
- [Cell Culture](#)

### SNX2 Antibody (aa350-400) - Images



Western blot of Snx2 in mouse placenta lysate in the 1) absence and 2) presence of immunizing...

### SNX2 Antibody (aa350-400) - Background

Involved in several stages of intracellular trafficking. Interacts with membranes containing phosphatidylinositol 3- phosphate (PtdIns(3P)) or phosphatidylinositol 3,5-bisphosphate (PtdIns(3,5)P2) (PubMed:16179610). Acts in part as component of the retromer membrane-deforming SNX-BAR subcomplex (PubMed:17101778). The SNX-BAR retromer mediates retrograde transport of cargo proteins from endosomes to the trans-Golgi network (TGN) and is involved in endosome-to-plasma membrane transport for cargo protein recycling. The SNX-BAR subcomplex functions to deform the donor membrane into a tubular profile called endosome-to-TGN transport carrier (ETC) (Probable). Can sense membrane curvature and has in vitro vesicle-to-membrane remodeling activity (PubMed:23085988). Required for retrograde

endosome-to-TGN transport of TGN38 (PubMed:20138391). Promotes KALRN- and RHOG-dependent but retromer-independent membrane remodeling such as lamellipodium formation; the function is dependent on GEF activity of KALRN (PubMed:20604901).

#### **SNX2 Antibody (aa350-400) - References**

Kurten R.C.,et al.Submitted (JAN-1998) to the EMBL/GenBank/DDBJ databases.  
Haft C.R.,et al.Mol. Cell. Biol. 18:7278-7287(1998).  
Kim J.W.,et al.Submitted (APR-2003) to the EMBL/GenBank/DDBJ databases.  
Kalnine N.,et al.Submitted (AUG-2003) to the EMBL/GenBank/DDBJ databases.  
Ota T.,et al.Nat. Genet. 36:40-45(2004).