

NOTCH4 Antibody (clone L5C5)
Mouse Monoclonal Antibody
Catalog # ALS14922**Specification**

NOTCH4 Antibody (clone L5C5) - Product Information

Application	WB, IHC-P, E, IP
Primary Accession	Q99466
Reactivity	Human
Host	Mouse
Clonality	Monoclonal
Calculated MW	210kDa KDa
Dilution	WB~~1:1000 IHC-P~~N/A E~~N/A IP~~N/A

NOTCH4 Antibody (clone L5C5) - Additional Information**Gene ID** 4855**Other Names**

Neurogenic locus notch homolog protein 4, Notch 4, hNotch4, Notch 4 extracellular truncation, Notch 4 intracellular domain, NOTCH4, INT3

Target/Specificity

Detects levels of the transfected intracellular region of human Notch4 protein.

Reconstitution & Storage

Short term 4°C, long term aliquot and store at -20°C, avoid freeze thaw cycles.

Precautions

NOTCH4 Antibody (clone L5C5) is for research use only and not for use in diagnostic or therapeutic procedures.

NOTCH4 Antibody (clone L5C5) - Protein Information**Name** NOTCH4 ([HGNC:7884](#))**Synonyms** INT3**Function**

Functions as a receptor for membrane-bound ligands Jagged1, Jagged2 and Delta1 to regulate cell-fate determination. Upon ligand activation through the released notch intracellular domain (NICD) it forms a transcriptional activator complex with RBPJ/RBPSUH and activates genes of the enhancer of split locus. Affects the implementation of differentiation, proliferation and apoptotic programs. May regulate branching morphogenesis in the developing vascular system (By similarity).

Cellular Location

Cell membrane; Single-pass type I membrane protein

Tissue Location

Highly expressed in the heart, moderately in the lung and placenta and at low levels in the liver, skeletal muscle, kidney, pancreas, spleen, lymph node, thymus, bone marrow and fetal liver. No expression was seen in adult brain or peripheral blood leukocytes

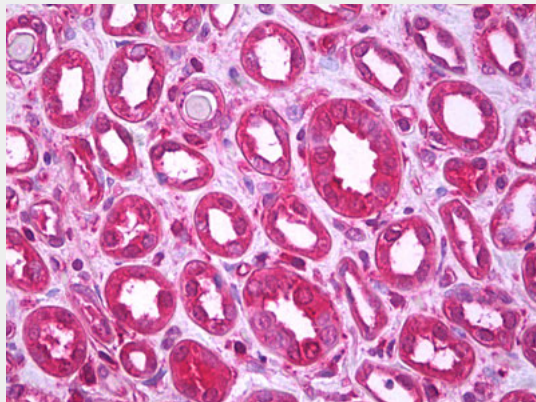
Volume

250 µl

NOTCH4 Antibody (clone L5C5) - Protocols

Provided below are standard protocols that you may find useful for product applications.

- [Western Blot](#)
- [Blocking Peptides](#)
- [Dot Blot](#)
- [Immunohistochemistry](#)
- [Immunofluorescence](#)
- [Immunoprecipitation](#)
- [Flow Cytometry](#)
- [Cell Culture](#)

NOTCH4 Antibody (clone L5C5) - Images

Anti-NOTCH4 antibody IHC of human kidney.

NOTCH4 Antibody (clone L5C5) - Background

Functions as a receptor for membrane-bound ligands Jagged1, Jagged2 and Delta1 to regulate cell-fate determination. Upon ligand activation through the released notch intracellular domain (NICD) it forms a transcriptional activator complex with RBPJ/RBPSUH and activates genes of the enhancer of split locus. Affects the implementation of differentiation, proliferation and apoptotic programs. May regulate branching morphogenesis in the developing vascular system (By similarity).

NOTCH4 Antibody (clone L5C5) - References

Sugaya K., et al. Gene 189:235-244(1997).
Li L., et al. Genomics 51:45-58(1998).

Mungall A.J.,et al.Nature 425:805-811(2003).

Miyagawa T.,et al.Submitted (FEB-1999) to the EMBL/GenBank/DDBJ databases.

Gray G.E.,et al.Am. J. Pathol. 154:785-794(1999).