

XAGE1E Antibody (C-Terminus)
Goat Polyclonal Antibody
Catalog # ALS14944**Specification**

XAGE1E Antibody (C-Terminus) - Product Information

Application	IHC-P, E
Primary Accession	Q9HD64
Reactivity	Human
Host	Goat
Clonality	Polyclonal
Dilution	IHC-P~~N/A E~~N/A

XAGE1E Antibody (C-Terminus) - Additional Information**Gene ID** 653067;653220**Other Names**

X antigen family member 1, XAGE-1, Cancer/testis antigen 12.1, CT12.1, G antigen family D member 2, XAGE1A, GAGED2, XAGE1

Target/Specificity

Human XAGE1D / GAGED2. This antibody is expected to recognise isoform d (NP_597673.1) only. Reported variants represent identical protein (NP_597673.1; NP_001091067.1; NP_001091074.1; NP_001091062.1; NP_001091065.1).

Reconstitution & Storage

Store at -20°C. Minimize freezing and thawing.

Precautions

XAGE1E Antibody (C-Terminus) is for research use only and not for use in diagnostic or therapeutic procedures.

XAGE1E Antibody (C-Terminus) - Protein Information**Name** XAGE1A ([HGNC:4111](#))**Tissue Location**

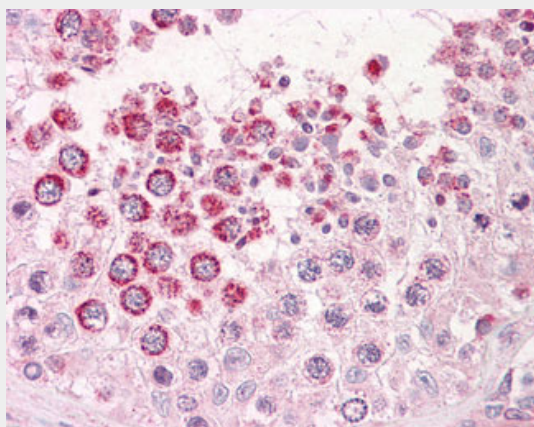
In normal tissues, highly expressed in testis. Expressed also in many different types of cancers: highly expressed in breast cancer, prostate cancer and many types of lung cancers, including squamous cell carcinoma, small cell carcinoma, non-small cell carcinoma, and adenocarcinoma, as well as in Ewing's cell lines, in some Ewing's sarcoma patient samples, and in one of one alveolar rhabdomyosarcoma patient sample.

XAGE1E Antibody (C-Terminus) - Protocols

Provided below are standard protocols that you may find useful for product applications.

- [Western Blot](#)
- [Blocking Peptides](#)
- [Dot Blot](#)
- [Immunohistochemistry](#)
- [Immunofluorescence](#)
- [Immunoprecipitation](#)
- [Flow Cytometry](#)
- [Cell Culture](#)

XAGE1E Antibody (C-Terminus) - Images



Anti-GAGED2 antibody IHC of human testis.