

**EPB41L4B Antibody (Internal)**  
**Goat Polyclonal Antibody**  
**Catalog # ALS14950****Specification**

---

**EPB41L4B Antibody (Internal) - Product Information**

Application	IHC
Primary Accession	<a href="#">O9H329</a>
Reactivity	Human, Rabbit, Monkey, Dog
Host	Goat
Clonality	Polyclonal
Calculated MW	100kDa KDa

**EPB41L4B Antibody (Internal) - Additional Information****Gene ID** 54566**Other Names**

Band 4.1-like protein 4B, FERM-containing protein CG1, Protein EHM2, EPB41L4B, EHM2

**Target/Specificity**

Human EPB41L4B. This antibody is expected to recognise both reported isoforms (NP\_060894.2; NP\_061987.3).

**Reconstitution & Storage**

Store at -20°C. Minimize freezing and thawing.

**Precautions**

EPB41L4B Antibody (Internal) is for research use only and not for use in diagnostic or therapeutic procedures.

**EPB41L4B Antibody (Internal) - Protein Information****Name** EPB41L4B ([HGNC:19818](#))**Function**

Up-regulates the activity of the Rho guanine nucleotide exchange factor ARHGEF18 (By similarity). Involved in the regulation of the circumferential actomyosin belt in epithelial cells (PubMed:<a href="http://www.uniprot.org/citations/22006950" target="\_blank">22006950</a>). Promotes cellular adhesion, migration and motility in vitro and may play a role in wound healing (PubMed:<a href="http://www.uniprot.org/citations/23664528" target="\_blank">23664528</a>). May have a role in mediating cytoskeletal changes associated with steroid- induced cell differentiation (PubMed:<a href="http://www.uniprot.org/citations/14521927" target="\_blank">14521927</a>).

**Cellular Location**

Cytoplasm. Cell junction, tight junction Note=Accumulates along apical cell-cell boundaries and is also detected in the cytoplasm in a punctate manner.

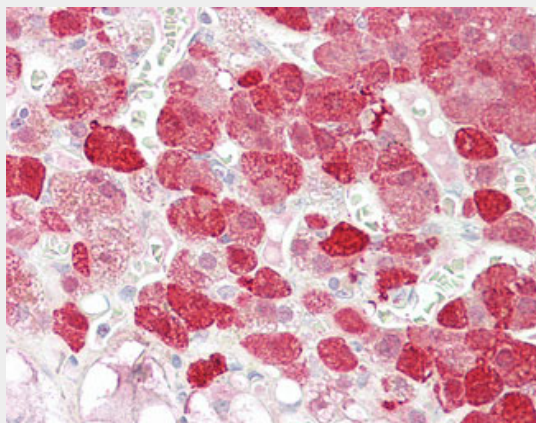
**Tissue Location**

Expressed at higher levels in acute wounds than chronic wounds with increased expression in healing wounds, especially at the leading wound edge (PubMed:23664528). Isoform 1 is highly expressed in brain. Isoform 2 is highly expressed in testis with lower levels in prostate and breast (PubMed:14521927)

**EPB41L4B Antibody (Internal) - Protocols**

Provided below are standard protocols that you may find useful for product applications.

- [Western Blot](#)
- [Blocking Peptides](#)
- [Dot Blot](#)
- [Immunohistochemistry](#)
- [Immunofluorescence](#)
- [Immunoprecipitation](#)
- [Flow Cytometry](#)
- [Cell Culture](#)

**EPB41L4B Antibody (Internal) - Images**

Anti-EPB41L4B antibody IHC of human adrenal.

**EPB41L4B Antibody (Internal) - References**

Chadwick B.P., et al. Mamm. Genome 11:81-83(2000).  
Shimizu K., et al. Genomics 65:113-120(2000).  
Humphray S.J., et al. Nature 429:369-374(2004).