

**RAMA1 / SKA3 Antibody (Internal)**  
**Goat Polyclonal Antibody**  
**Catalog # ALS14958****Specification**

---

**RAMA1 / SKA3 Antibody (Internal) - Product Information**

Application	IHC-P, E
Primary Accession	<a href="#">Q8IX90</a>
Reactivity	Human, Dog
Host	Goat
Clonality	Polyclonal
Calculated MW	46kDa KDa
Dilution	IHC-P~~N/A E~~N/A

**RAMA1 / SKA3 Antibody (Internal) - Additional Information****Gene ID** 221150**Other Names**

Spindle and kinetochore-associated protein 3, SKA3, C13orf3, RAMA1

**Target/Specificity**

Human SKA3.

**Reconstitution & Storage**

Store at -20°C. Minimize freezing and thawing.

**Precautions**

RAMA1 / SKA3 Antibody (Internal) is for research use only and not for use in diagnostic or therapeutic procedures.

**RAMA1 / SKA3 Antibody (Internal) - Protein Information****Name** SKA3**Synonyms** C13orf3, RAMA1**Function**

Component of the SKA1 complex, a microtubule-binding subcomplex of the outer kinetochore that is essential for proper chromosome segregation (PubMed: [19289083](http://www.uniprot.org/citations/19289083), PubMed: [19360002](http://www.uniprot.org/citations/19360002), PubMed: [23085020](http://www.uniprot.org/citations/23085020)). The SKA1 complex is a direct component of the kinetochore-microtubule interface and directly associates with microtubules as oligomeric assemblies (PubMed: [19289083](http://www.uniprot.org/citations/19289083), PubMed: [19360002](http://www.uniprot.org/citations/19360002)). The complex

facilitates the processive movement of microspheres along a microtubule in a depolymerization-coupled manner (PubMed:<a href="http://www.uniprot.org/citations/19289083" target="\_blank">19289083</a>). In the complex, it mediates the microtubule-stimulated oligomerization (PubMed:<a href="http://www.uniprot.org/citations/19289083" target="\_blank">19289083</a>). Affinity for microtubules is synergistically enhanced in the presence of the ndc-80 complex and may allow the ndc-80 complex to track depolymerizing microtubules (PubMed:<a href="http://www.uniprot.org/citations/23085020" target="\_blank">23085020</a>).

#### Cellular Location

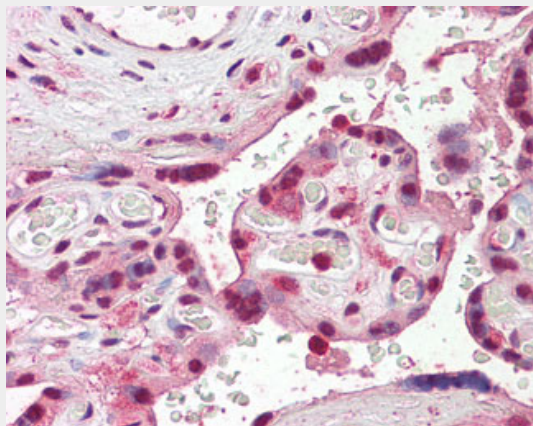
Cytoplasm, cytoskeleton, spindle. Chromosome, centromere, kinetochore Note=Localizes to the outer kinetochore and spindle microtubules during mitosis in a NDC80 complex-dependent manner

#### RAMA1 / SKA3 Antibody (Internal) - Protocols

Provided below are standard protocols that you may find useful for product applications.

- [Western Blot](#)
- [Blocking Peptides](#)
- [Dot Blot](#)
- [Immunohistochemistry](#)
- [Immunofluorescence](#)
- [Immunoprecipitation](#)
- [Flow Cytometry](#)
- [Cell Culture](#)

#### RAMA1 / SKA3 Antibody (Internal) - Images



Anti-SKA3 antibody IHC of human placenta.

#### RAMA1 / SKA3 Antibody (Internal) - Background

Component of the SKA1 complex, a microtubule-binding subcomplex of the outer kinetochore that is essential for proper chromosome segregation. The SKA1 complex is a direct component of the kinetochore-microtubule interface and directly associates with microtubules as oligomeric assemblies. The complex facilitates the processive movement of microspheres along a microtubule in a depolymerization-coupled manner. In the complex, it mediates the microtubule-stimulated oligomerization.

#### RAMA1 / SKA3 Antibody (Internal) - References

Panvichian R., et al. Submitted (MAR-2001) to the EMBL/GenBank/DDBJ databases.  
Ota T., et al. Nat. Genet. 36:40-45(2004).  
Dunham A., et al. Nature 428:522-528(2004).  
Mural R.J., et al. Submitted (JUL-2005) to the EMBL/GenBank/DDBJ databases.  
Brill L.M., et al. Anal. Chem. 76:2763-2772(2004).