

TUBB / Beta Tubulin Antibody (aa401-450)
Rabbit Polyclonal Antibody
Catalog # ALS15085**Specification**

TUBB / Beta Tubulin Antibody (aa401-450) - Product Information

Application	WB, IHC-P, E
Primary Accession	P07437
Reactivity	Human, Mouse, Rat
Host	Rabbit
Clonality	Polyclonal
Calculated MW	50kDa KDa
Dilution	WB~~1:1000 IHC-P~~N/A E~~N/A

TUBB / Beta Tubulin Antibody (aa401-450) - Additional Information

Gene ID 203068

Other Names

Tubulin beta chain, Tubulin beta-5 chain, TUBB, TUBB5

Target/Specificity

Tubulin beta Antibody detects endogenous levels of total Tubulin beta protein.

Reconstitution & Storage

Store at -20°C for up to one year.

Precautions

TUBB / Beta Tubulin Antibody (aa401-450) is for research use only and not for use in diagnostic or therapeutic procedures.

TUBB / Beta Tubulin Antibody (aa401-450) - Protein Information

Name TUBB

Synonyms TUBB5

Function

Tubulin is the major constituent of microtubules, a cylinder consisting of laterally associated linear protofilaments composed of alpha- and beta-tubulin heterodimers. Microtubules grow by the addition of GTP-tubulin dimers to the microtubule end, where a stabilizing cap forms. Below the cap, tubulin dimers are in GDP-bound state, owing to GTPase activity of alpha-tubulin.

Cellular Location

Cytoplasm, cytoskeleton

Tissue Location

Ubiquitously expressed with highest levels in spleen, thymus and immature brain.

Volume

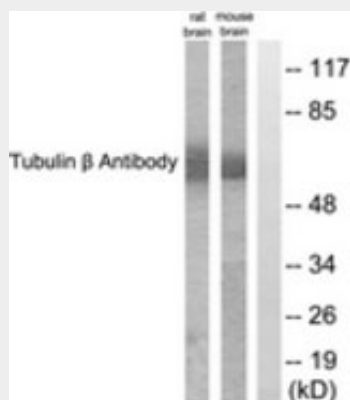
50 μ l

TUBB / Beta Tubulin Antibody (aa401-450) - Protocols

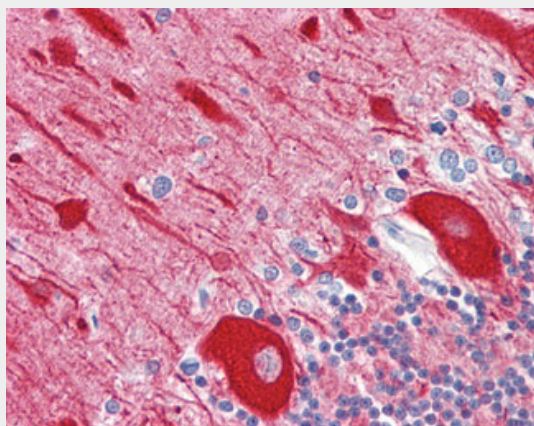
Provided below are standard protocols that you may find useful for product applications.

- [Western Blot](#)
- [Blocking Peptides](#)
- [Dot Blot](#)
- [Immunohistochemistry](#)
- [Immunofluorescence](#)
- [Immunoprecipitation](#)
- [Flow Cytometry](#)
- [Cell Culture](#)

TUBB / Beta Tubulin Antibody (aa401-450) - Images



Western blot of extracts from mouse brain/rat brain cells, using Tubulin beta Antibody.



Anti-TUBB3 / Beta III Tubulin antibody IHC of human brain, cerebellum.

TUBB / Beta Tubulin Antibody (aa401-450) - Background

Tubulin is the major constituent of microtubules. It binds two moles of GTP, one at an

exchangeable site on the beta chain and one at a non-exchangeable site on the alpha chain.

TUBB / Beta Tubulin Antibody (aa401-450) - References

Lee M.G.-S.,et al.Cell 33:477-487(1983).

Hall J.L.,et al.Mol. Cell. Biol. 3:854-862(1983).

Crabtree D.V.,et al.Bioorg. Med. Chem. 9:1967-1976(2001).

Yu W.,et al.Submitted (JUN-1998) to the EMBL/GenBank/DDBJ databases.

Shiina S.,et al.Submitted (SEP-1999) to the EMBL/GenBank/DDBJ databases.