

HEP / EPHB6 Antibody (aa861-910)
Rabbit Polyclonal Antibody
Catalog # ALS15097**Specification**

HEP / EPHB6 Antibody (aa861-910) - Product Information

Application	IF, WB, IHC
Primary Accession	O15197
Reactivity	Human, Mouse, Rat
Host	Rabbit
Clonality	Polyclonal
Calculated MW	111kDa KDa

HEP / EPHB6 Antibody (aa861-910) - Additional Information**Gene ID** 2051**Other Names**

Ephrin type-B receptor 6, HEP, Tyrosine-protein kinase-defective receptor EPH-6, EPHB6

Target/Specificity

EPHB6 Antibody detects endogenous levels of total EPHB6 protein.

Reconstitution & Storage

Store at -20°C for up to one year.

Precautions

HEP / EPHB6 Antibody (aa861-910) is for research use only and not for use in diagnostic or therapeutic procedures.

HEP / EPHB6 Antibody (aa861-910) - Protein Information**Name** EPHB6**Function**

Kinase-defective receptor for members of the ephrin-B family. Binds to ephrin-B1 and ephrin-B2. Modulates cell adhesion and migration by exerting both positive and negative effects upon stimulation with ephrin-B2. Inhibits JNK activation, T-cell receptor-induced IL-2 secretion and CD25 expression upon stimulation with ephrin-B2.

Cellular Location

Membrane; Single-pass type I membrane protein.

Tissue Location

Expressed in brain. Expressed in non invasive breast carcinoma cell lines (at protein level). Strong expression in brain and pancreas, and weak expression in other tissues, such as heart, placenta, lung, liver, skeletal muscle and kidney. Expressed in breast non invasive tumors but not in metastatic lesions. Isoform 3 is expressed in cell lines of glioblastomas, anaplastic astrocytomas,

gliosarcomas and astrocytomas. Isoform 3 is not detected in normal tissues.

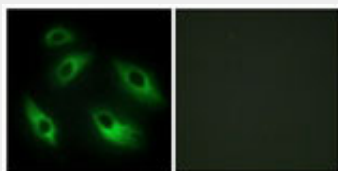
Volume
50 μ l

HEP / EPHB6 Antibody (aa861-910) - Protocols

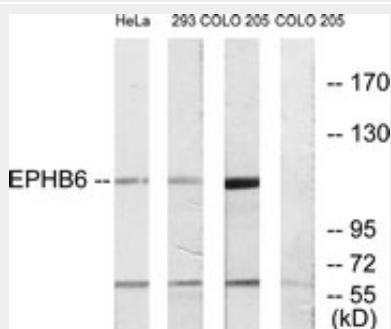
Provided below are standard protocols that you may find useful for product applications.

- [Western Blot](#)
- [Blocking Peptides](#)
- [Dot Blot](#)
- [Immunohistochemistry](#)
- [Immunofluorescence](#)
- [Immunoprecipitation](#)
- [Flow Cytometry](#)
- [Cell Culture](#)

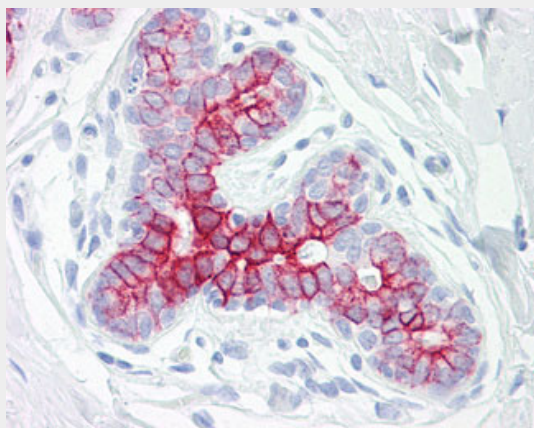
HEP / EPHB6 Antibody (aa861-910) - Images



Immunofluorescence of HeLa cells, using EPHB6 Antibody.



Western blot of extracts from COLO/293/HeLa cells, using EPHB6 Antibody.



Anti-EPHB6 antibody IHC of human breast.

HEP / EPHB6 Antibody (aa861-910) - Background

Kinase-defective receptor for members of the ephrin-B family. Binds to ephrin-B1 and ephrin-B2. Modulates cell adhesion and migration by exerting both positive and negative effects upon stimulation with ephrin-B2. Inhibits JNK activation, T-cell receptor-induced IL-2 secretion and CD25 expression upon stimulation with ephrin-B2.

HEP / EPHB6 Antibody (aa861-910) - References

Matsuoka H.,et al.Biochem. Biophys. Res. Commun. 235:487-492(1997).
Hillier L.W.,et al.Nature 424:157-164(2003).
Scherer S.W.,et al.Science 300:767-772(2003).
Mural R.J.,et al.Submitted (SEP-2005) to the EMBL/GenBank/DDBJ databases.
Jin M.,et al.Oncol. Rep. 19:1277-1283(2008).