

RGS22 Antibody
Rabbit Polyclonal Antibody
Catalog # ALS15161**Specification**

RGS22 Antibody - Product Information

Application	IHC
Primary Accession	Q8NE09
Reactivity	Human
Host	Rabbit
Clonality	Polyclonal
Calculated MW	147kDa KDa

RGS22 Antibody - Additional Information**Gene ID** 26166**Other Names**

Regulator of G-protein signaling 22, RGS22, RGS22

Reconstitution & Storage

Short term 4°C, long term aliquot and store at -20°C, avoid freeze thaw cycles. Store undiluted.

Precautions

RGS22 Antibody is for research use only and not for use in diagnostic or therapeutic procedures.

RGS22 Antibody - Protein Information**Name** RGS22**Function**

Inhibits signal transduction by increasing the GTPase activity of G protein alpha subunits thereby driving them into their inactive GDP-bound form.

Cellular Location

Cytoplasm. Nucleus. Note=Expressed in the cytoplasm of spermatogonia and spermatocytes. In spermatids, also expressed in the nucleus

Tissue Location

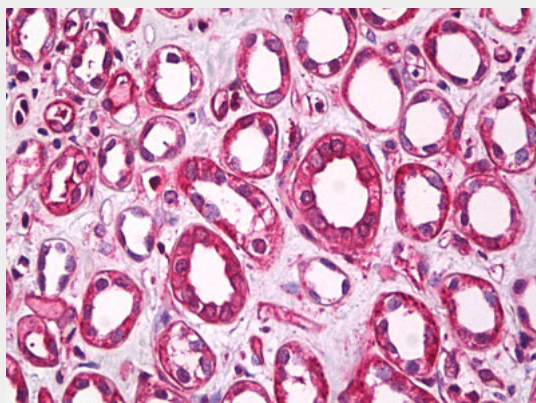
Testis-specific. Expressed in Leydig cells and spermatogenic cells from the spermatogonia to spermatid stages (at protein level).

RGS22 Antibody - Protocols

Provided below are standard protocols that you may find useful for product applications.

- [Western Blot](#)
- [Blocking Peptides](#)
- [Dot Blot](#)
- [Immunohistochemistry](#)
- [Immunofluorescence](#)
- [Immunoprecipitation](#)
- [Flow Cytometry](#)
- [Cell Culture](#)

RGS22 Antibody - Images



Anti-RGS22 antibody IHC of human kidney, tubules.

RGS22 Antibody - Background

Inhibits signal transduction by increasing the GTPase activity of G protein alpha subunits thereby driving them into their inactive GDP-bound form.

RGS22 Antibody - References

Hu Y.,et al.Biol. Reprod. 79:1021-1029(2008).
Ota T.,et al.Nat. Genet. 36:40-45(2004).
Nusbaum C.,et al.Nature 439:331-335(2006).
Mural R.J.,et al.Submitted (JUL-2005) to the EMBL/GenBank/DDBJ databases.
Bechtel S.,et al.BMC Genomics 8:399-399(2007).