

Vimentin Antibody
Chicken Polyclonal Antibody
Catalog # ALS15163**Specification**

Vimentin Antibody - Product Information

Application	WB, IHC-P, ICC
Primary Accession	P08670
Reactivity	Human, Mouse
Host	Chicken
Clonality	Polyclonal
Calculated MW	54kDa KDa
Dilution	WB~~1:1000 IHC-P~~N/A ICC~~N/A

Vimentin Antibody - Additional Information**Gene ID** 7431**Other Names**

Vimentin, VIM

Target/Specificity

Recognizes human and mouse Vimentin.

Reconstitution & Storage

Short term 4°C, long term aliquot and store at -20°C, avoid freeze thaw cycles. Store undiluted.

Precautions

Vimentin Antibody is for research use only and not for use in diagnostic or therapeutic procedures.

Vimentin Antibody - Protein Information**Name** VIM ([HGNC:12692](#))**Function**

Vimentins are class-III intermediate filaments found in various non-epithelial cells, especially mesenchymal cells. Vimentin is attached to the nucleus, endoplasmic reticulum, and mitochondria, either laterally or terminally. Plays a role in cell directional movement, orientation, cell sheet organization and Golgi complex polarization at the cell migration front (By similarity). Protects SCRIB from proteasomal degradation and facilitates its localization to intermediate filaments in a cell contact-mediated manner (By similarity). May promote axon outgrowth and motor fiber repair via DSP- mediated recruitment to outgrowth tips (By similarity).

Cellular Location

Cytoplasm. Cytoplasm, cytoskeleton. Nucleus matrix {ECO:0000250|UniProtKB:P31000}. Cell membrane {ECO:0000250|UniProtKB:P20152}. Cell projection, axon

{ECO:0000250|UniProtKB:P20152}

Tissue Location

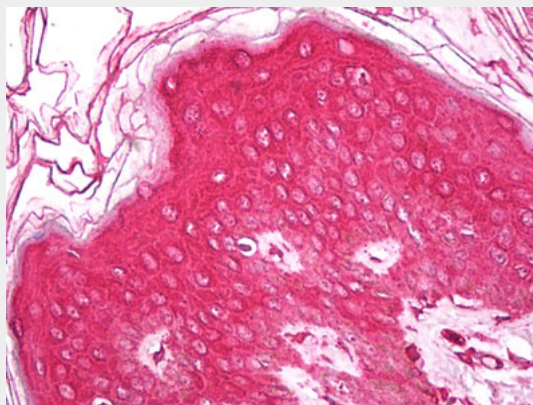
Highly expressed in fibroblasts, some expression in T- and B-lymphocytes, and little or no expression in Burkitt's lymphoma cell lines. Expressed in many hormone-independent mammary carcinoma cell lines.

Vimentin Antibody - Protocols

Provided below are standard protocols that you may find useful for product applications.

- [Western Blot](#)
- [Blocking Peptides](#)
- [Dot Blot](#)
- [Immunohistochemistry](#)
- [Immunofluorescence](#)
- [Immunoprecipitation](#)
- [Flow Cytometry](#)
- [Cell Culture](#)

Vimentin Antibody - Images



Anti-Vimentin antibody IHC of human skin, epidermis.

Vimentin Antibody - Background

Vimentins are class-III intermediate filaments found in various non-epithelial cells, especially mesenchymal cells. Vimentin is attached to the nucleus, endoplasmic reticulum, and mitochondria, either laterally or terminally.

Vimentin Antibody - References

Ferrari S., et al. Mol. Cell. Biol. 6:3614-3620(1986).
Honore B., et al. Nucleic Acids Res. 18:6692-6692(1990).
Hartmann T.B., et al. Br. J. Dermatol. 150:252-258(2004).
Zimbelmann R., et al. Submitted (JUN-2007) to the EMBL/GenBank/DDBJ databases.
Ota T., et al. Nat. Genet. 36:40-45(2004).