

**CRP / C-Reactive Protein Antibody**  
**Mouse Monoclonal Antibody**  
**Catalog # ALS15180****Specification**

---

**CRP / C-Reactive Protein Antibody - Product Information**

Application	WB
Primary Accession	<a href="#">P02741</a>
Reactivity	Human, Mouse, Rat
Host	Mouse
Clonality	Monoclonal
Calculated MW	25kDa KDa

**CRP / C-Reactive Protein Antibody - Additional Information****Gene ID** 1401**Other Names**

C-reactive protein, C-reactive protein(1-205), CRP, PTX1

**Reconstitution & Storage**

Long term: -20°C; Short term: -20°C

**Precautions**

CRP / C-Reactive Protein Antibody is for research use only and not for use in diagnostic or therapeutic procedures.

**CRP / C-Reactive Protein Antibody - Protein Information****Name** CRP**Synonyms** PTX1**Function**

Displays several functions associated with host defense: it promotes agglutination, bacterial capsular swelling, phagocytosis and complement fixation through its calcium-dependent binding to phosphorylcholine. Can interact with DNA and histones and may scavenge nuclear material released from damaged circulating cells.

**Cellular Location**

Secreted.

**Tissue Location**

Found in plasma.

**Volume**

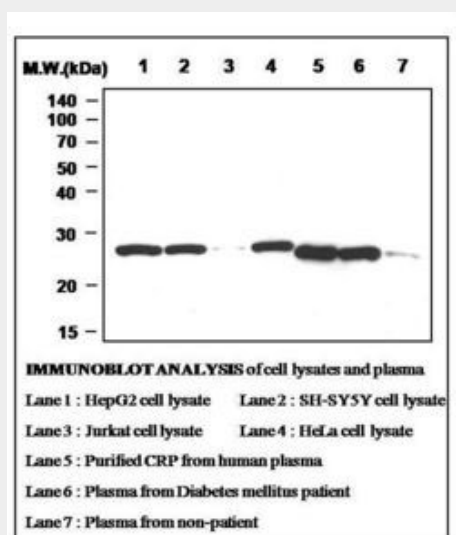
50 µl

## CRP / C-Reactive Protein Antibody - Protocols

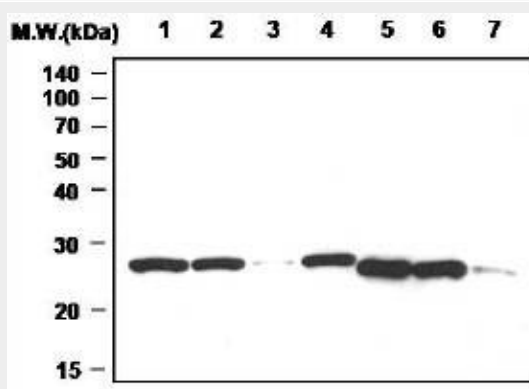
Provided below are standard protocols that you may find useful for product applications.

- [Western Blot](#)
- [Blocking Peptides](#)
- [Dot Blot](#)
- [Immunohistochemistry](#)
- [Immunofluorescence](#)
- [Immunoprecipitation](#)
- [Flow Cytometry](#)
- [Cell Culture](#)

## CRP / C-Reactive Protein Antibody - Images



0



Lane 1: HepG2 cell lysate; Lane 2: SH-SY5Y cell lysate; Lane 3: Jurkat cell lysate; Lane 4: HeLa...

## CRP / C-Reactive Protein Antibody - Background

Displays several functions associated with host defense: it promotes agglutination, bacterial capsular swelling, phagocytosis and complement fixation through its calcium-dependent binding to phosphorylcholine. Can interact with DNA and histones and may scavenge nuclear material released from damaged circulating cells.

**CRP / C-Reactive Protein Antibody - References**

Lei K.-J.,et al.J. Biol. Chem. 260:13377-13383(1985).

Woo P.,et al.J. Biol. Chem. 260:13384-13388(1985).

Murphy T.M.,et al.Submitted (NOV-1990) to the EMBL/GenBank/DDBJ databases.

Tenchini M.L.,et al.Submitted (MAY-1992) to the EMBL/GenBank/DDBJ databases.

Harraghy N.,et al.Submitted (DEC-2001) to the EMBL/GenBank/DDBJ databases.