

PLG / Plasmin / Plasminogen Antibody (clone 10A1)
Mouse Monoclonal Antibody
Catalog # ALS15183**Specification****PLG / Plasmin / Plasminogen Antibody (clone 10A1) - Product Information**

| | |
|-------------------|------------------------------------|
| Application | WB, IHC-P, E |
| Primary Accession | P00747 |
| Reactivity | Human |
| Host | Mouse |
| Clonality | Monoclonal |
| Calculated MW | 91kDa KDa |
| Dilution | WB~~1:1000 IHC-P~~N/A E~~N/A |

PLG / Plasmin / Plasminogen Antibody (clone 10A1) - Additional Information**Gene ID** 5340**Other Names**

Plasminogen, 3.4.21.7, Plasmin heavy chain A, Activation peptide, Angiostatin, Plasmin heavy chain A, short form, Plasmin light chain B, PLG

Reconstitution & Storage

Long term: -20°C; Short term: -20°C

Precautions

PLG / Plasmin / Plasminogen Antibody (clone 10A1) is for research use only and not for use in diagnostic or therapeutic procedures.

PLG / Plasmin / Plasminogen Antibody (clone 10A1) - Protein Information**Name** PLG**Function**

Plasmin dissolves the fibrin of blood clots and acts as a proteolytic factor in a variety of other processes including embryonic development, tissue remodeling, tumor invasion, and inflammation. In ovulation, weakens the walls of the Graafian follicle. It activates the urokinase-type plasminogen activator, collagenases and several complement zymogens, such as C1, C4 and C5 (PubMed:6447255). Cleavage of fibronectin and laminin leads to cell detachment and apoptosis. Also cleaves fibrin, thrombospondin and von Willebrand factor. Its role in tissue remodeling and tumor invasion may be modulated by CSPG4. Binds to cells.

Cellular Location

Secreted. Note=Locates to the cell surface where it is proteolytically cleaved to produce the active plasmin. Interaction with HRG tethers it to the cell surface

Tissue Location

Present in plasma and many other extracellular fluids. It is synthesized in the liver

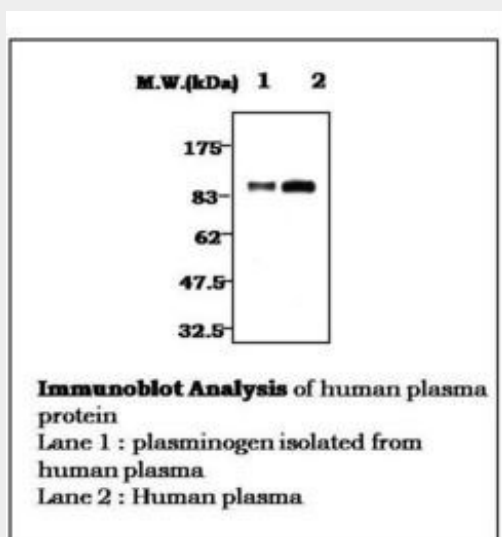
Volume

Array

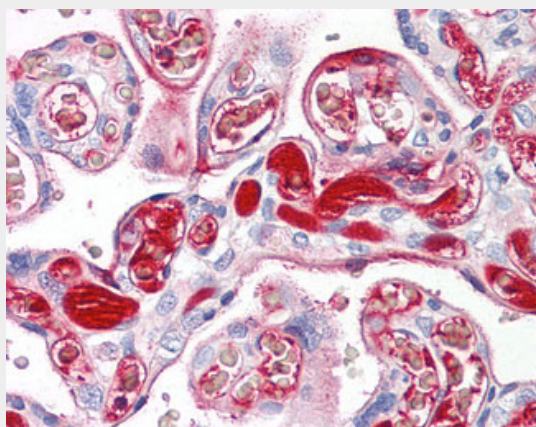
PLG / Plasmin / Plasminogen Antibody (clone 10A1) - Protocols

Provided below are standard protocols that you may find useful for product applications.

- [Western Blot](#)
- [Blocking Peptides](#)
- [Dot Blot](#)
- [Immunohistochemistry](#)
- [Immunofluorescence](#)
- [Immunoprecipitation](#)
- [Flow Cytometry](#)
- [Cell Culture](#)

PLG / Plasmin / Plasminogen Antibody (clone 10A1) - Images

0



Anti-Plasmin / Plasminogen antibody IHC of human placenta.

PLG / Plasmin / Plasminogen Antibody (clone 10A1) - Background

Plasmin dissolves the fibrin of blood clots and acts as a proteolytic factor in a variety of other processes including embryonic development, tissue remodeling, tumor invasion, and inflammation. In ovulation, weakens the walls of the Graafian follicle. It activates the urokinase-type plasminogen activator, collagenases and several complement zymogens, such as C1 and C5. Cleavage of fibronectin and laminin leads to cell detachment and apoptosis. Also cleaves fibrin, thrombospondin and von Willebrand factor. Its role in tissue remodeling and tumor invasion may be modulated by CSPG4. Binds to cells.

PLG / Plasmin / Plasminogen Antibody (clone 10A1) - References

Petersen T.E., et al. J. Biol. Chem. 265:6104-6111(1990).
Forsgren M., et al. FEBS Lett. 213:254-260(1987).
Browne M.J., et al. Submitted (OCT-1991) to the EMBL/GenBank/DDBJ databases.
Mungall A.J., et al. Nature 425:805-811(2003).
Sottrup-Jensen L., et al. Submitted (JUL-1977) to the PIR data bank.