

**VTN / Vitronectin Antibody**  
**Mouse Monoclonal Antibody**  
**Catalog # ALS15186****Specification**

---

**VTN / Vitronectin Antibody - Product Information**

Application	WB, IHC
Primary Accession	<a href="#">P04004</a>
Reactivity	Human
Host	Mouse
Clonality	Monoclonal
Calculated MW	54kDa KDa

**VTN / Vitronectin Antibody - Additional Information****Gene ID** 7448**Other Names**

Vitronectin, VN, S-protein, Serum-spreading factor, V75, Vitronectin V65 subunit, Vitronectin V10 subunit, Somatomedin-B, VTN

**Reconstitution & Storage**

Long term: -20°C; Short term: -20°C

**Precautions**

VTN / Vitronectin Antibody is for research use only and not for use in diagnostic or therapeutic procedures.

**VTN / Vitronectin Antibody - Protein Information****Name** VTN**Function**

Vitronectin is a cell adhesion and spreading factor found in serum and tissues. Vitronectin interact with glycosaminoglycans and proteoglycans. Is recognized by certain members of the integrin family and serves as a cell-to-substrate adhesion molecule. Inhibitor of the membrane-damaging effect of the terminal cytolytic complement pathway.

**Cellular Location**

Secreted, extracellular space

**Tissue Location**

Expressed in the retina pigment epithelium (at protein level) (PubMed:25136834). Expressed in plasma (at protein level) (PubMed:2448300). Expressed in serum (at protein level) (PubMed:29567995).

**Volume**

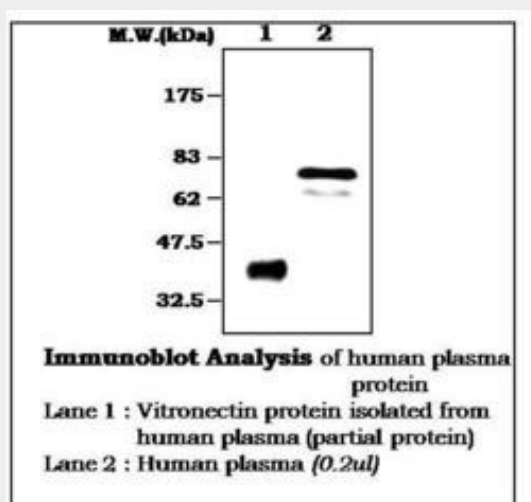
50 µl

## VTN / Vitronectin Antibody - Protocols

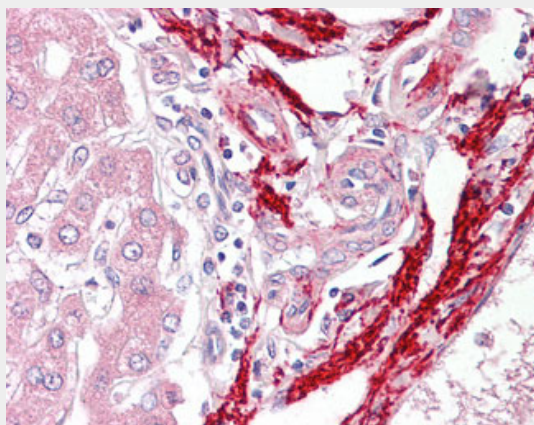
Provided below are standard protocols that you may find useful for product applications.

- [Western Blot](#)
- [Blocking Peptides](#)
- [Dot Blot](#)
- [Immunohistochemistry](#)
- [Immunofluorescence](#)
- [Immunoprecipitation](#)
- [Flow Cytometry](#)
- [Cell Culture](#)

## VTN / Vitronectin Antibody - Images



0



Anti-Vitronectin antibody IHC of human liver.

## VTN / Vitronectin Antibody - Background

Vitronectin is a cell adhesion and spreading factor found in serum and tissues. Vitronectin interact with glycosaminoglycans and proteoglycans. Is recognized by certain members of the integrin family and serves as a cell-to-substrate adhesion molecule. Inhibitor of the membrane-damaging effect of the terminal cytolytic complement pathway.

**VTN / Vitronectin Antibody - References**

Suzuki S.,et al.EMBO J. 4:2519-2524(1985).  
Suzuki S.,et al.Submitted (JUN-1986) to the PIR data bank.  
Jenne D.E.,et al.EMBO J. 4:3153-3157(1985).  
Jenne D.E.,et al.Biochemistry 26:6735-6742(1987).  
Ota T.,et al.Nat. Genet. 36:40-45(2004).