

UCHL3 Antibody
Mouse Monoclonal Antibody
Catalog # ALS15198**Specification**

UCHL3 Antibody - Product Information

Application	WB, IHC
Primary Accession	P15374
Reactivity	Human, Mouse, Rat
Host	Mouse
Clonality	Monoclonal
Calculated MW	26kDa KDa

UCHL3 Antibody - Additional Information**Gene ID** 7347**Other Names**

Ubiquitin carboxyl-terminal hydrolase isozyme L3, UCH-L3, 3.4.19.12, Ubiquitin thioesterase L3, UCHL3

Reconstitution & Storage

Long term: -20°C; Short term: -20°C

Precautions

UCHL3 Antibody is for research use only and not for use in diagnostic or therapeutic procedures.

UCHL3 Antibody - Protein Information**Name** UCHL3**Function**

Deubiquitinating enzyme (DUB) that controls levels of cellular ubiquitin through processing of ubiquitin precursors and ubiquitinated proteins. Thiol protease that recognizes and hydrolyzes a peptide bond at the C-terminal glycine of either ubiquitin or NEDD8. Has a 10-fold preference for Arg and Lys at position P3", and exhibits a preference towards 'Lys-48'-linked ubiquitin chains. Deubiquitinates ENAC in apical compartments, thereby regulating apical membrane recycling. Indirectly increases the phosphorylation of IGFIR, AKT and FOXO1 and promotes insulin-signaling and insulin-induced adipogenesis. Required for stress-response retinal, skeletal muscle and germ cell maintenance. May be involved in working memory. Can hydrolyze UBB(+1), a mutated form of ubiquitin which is not effectively degraded by the proteasome and is associated with neurodegenerative disorders.

Cellular Location

Cytoplasm.

Tissue Location

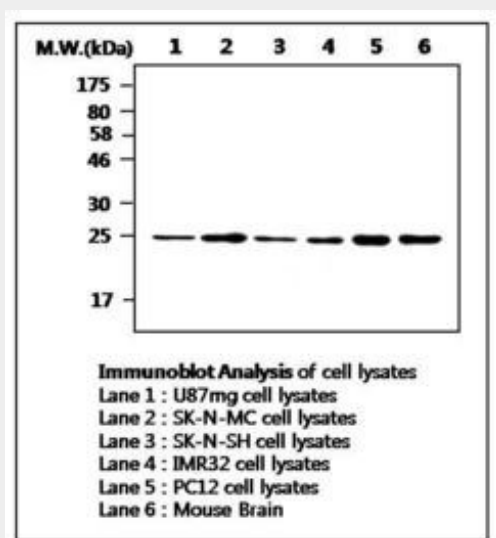
Highly expressed in heart, skeletal muscle, and testis.

UCHL3 Antibody - Protocols

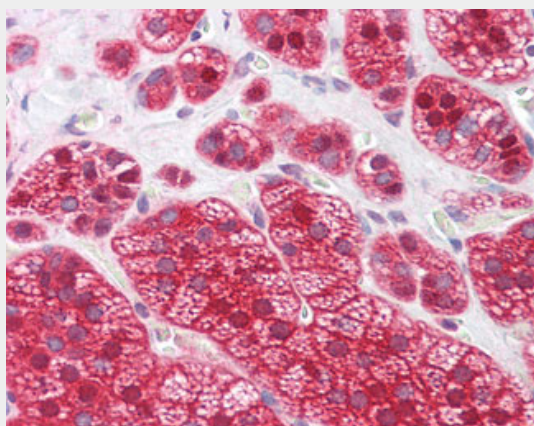
Provided below are standard protocols that you may find useful for product applications.

- [Western Blot](#)
- [Blocking Peptides](#)
- [Dot Blot](#)
- [Immunohistochemistry](#)
- [Immunofluorescence](#)
- [Immunoprecipitation](#)
- [Flow Cytometry](#)
- [Cell Culture](#)

UCHL3 Antibody - Images



0



Anti-UCHL3 antibody IHC of human adrenal.

UCHL3 Antibody - Background

Deubiquitinating enzyme (DUB) that controls levels of cellular ubiquitin through processing of ubiquitin precursors and ubiquitinated proteins. Thiol protease that recognizes and hydrolyzes a peptide bond at the C-terminal glycine of either ubiquitin or NEDD8. Has a 10-fold preference for

Arg and Lys at position P3", and exhibits a preference towards 'Lys-48'-linked Ubiquitin chains. Deubiquitinates ENAC in apical compartments, thereby regulating apical membrane recycling. Indirectly increases the phosphorylation of IGFIR, AKT and FOXO1 and promotes insulin- signaling and insulin-induced adipogenesis. Required for stress- response retinal, skeletal muscle and germ cell maintenance. May be involved in working memory. Can hydrolyze UBB(+1), a mutated form of ubiquitin which is not effectively degraded by the proteasome and is associated with neurogenerative disorders.

UHL3 Antibody - References

Wilkinson K.D.,et al.Science 246:670-673(1989).
Kalinine N.,et al.Submitted (MAY-2003) to the EMBL/GenBank/DDBJ databases.
Ebert L.,et al.Submitted (JUN-2004) to the EMBL/GenBank/DDBJ databases.
Ota T.,et al.Nat. Genet. 36:40-45(2004).
Dunham A.,et al.Nature 428:522-528(2004).