

**CRP / C-Reactive Protein Antibody**  
**Mouse Monoclonal Antibody**  
**Catalog # ALS15199****Specification**

---

**CRP / C-Reactive Protein Antibody - Product Information**

Application	IHC
Primary Accession	<a href="#">P02741</a>
Reactivity	Human
Host	Mouse
Clonality	Monoclonal
Calculated MW	25kDa KDa

**CRP / C-Reactive Protein Antibody - Additional Information****Gene ID** 1401**Other Names**

C-reactive protein, C-reactive protein(1-205), CRP, PTX1

**Target/Specificity**Recognizes the human CRP antigen both in the presence and in the absence (samples containing EDTA) of Ca<sup>2+</sup>.**Reconstitution & Storage**

Short term 4°C, long term aliquot and store at -20°C, avoid freeze thaw cycles. Store undiluted.

**Precautions**

CRP / C-Reactive Protein Antibody is for research use only and not for use in diagnostic or therapeutic procedures.

**CRP / C-Reactive Protein Antibody - Protein Information****Name** CRP**Synonyms** PTX1**Function**

Displays several functions associated with host defense: it promotes agglutination, bacterial capsular swelling, phagocytosis and complement fixation through its calcium-dependent binding to phosphorylcholine. Can interact with DNA and histones and may scavenge nuclear material released from damaged circulating cells.

**Cellular Location**

Secreted.

**Tissue Location**

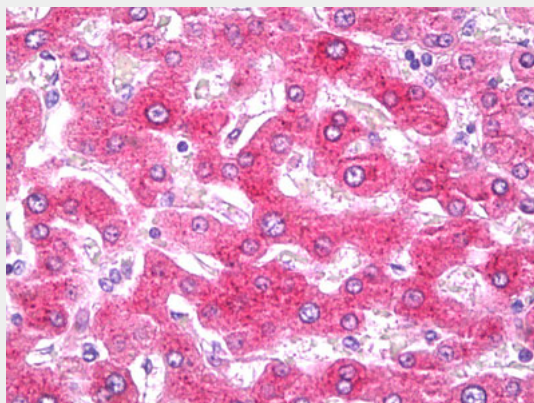
Found in plasma.

## **CRP / C-Reactive Protein Antibody - Protocols**

Provided below are standard protocols that you may find useful for product applications.

- [Western Blot](#)
- [Blocking Peptides](#)
- [Dot Blot](#)
- [Immunohistochemistry](#)
- [Immunofluorescence](#)
- [Immunoprecipitation](#)
- [Flow Cytometry](#)
- [Cell Culture](#)

## **CRP / C-Reactive Protein Antibody - Images**



Anti-CRP antibody IHC of human liver.

## **CRP / C-Reactive Protein Antibody - Background**

Displays several functions associated with host defense: it promotes agglutination, bacterial capsular swelling, phagocytosis and complement fixation through its calcium-dependent binding to phosphorylcholine. Can interact with DNA and histones and may scavenge nuclear material released from damaged circulating cells.

## **CRP / C-Reactive Protein Antibody - References**

Lei K.-J., et al. J. Biol. Chem. 260:13377-13383(1985).  
Woo P., et al. J. Biol. Chem. 260:13384-13388(1985).  
Murphy T.M., et al. Submitted (NOV-1990) to the EMBL/GenBank/DDBJ databases.  
Tenchini M.L., et al. Submitted (MAY-1992) to the EMBL/GenBank/DDBJ databases.  
Harraghy N., et al. Submitted (DEC-2001) to the EMBL/GenBank/DDBJ databases.