

**AGR2/AGR3 Antibody (clone AGR3.4)**  
**Mouse Monoclonal Antibody**  
**Catalog # ALS15214****Specification**

---

**AGR2/AGR3 Antibody (clone AGR3.4) - Product Information**

Application	IHC
Primary Accession	<a href="#">O95994</a>
Other Accession	<a href="#">Q8TD06</a>
Reactivity	Human
Host	Mouse
Clonality	Monoclonal

**AGR2/AGR3 Antibody (clone AGR3.4) - Additional Information****Gene ID** 10551**Other Names**

Anterior gradient protein 2 homolog, AG-2, hAG-2, HPC8, Secreted cement gland protein XAG-2 homolog, AGR2, AG2

**Target/Specificity**

The antibody AGR3.4 recognizes the PLMII epitope of AGR3 (AG3) and AGR2 (AG2) proteins (19-20 kD); secreted cytoplasmic proteins which can serve as markers of carcinogenesis.

**Reconstitution & Storage**

Short term 4°C, long term aliquot and store at -20°C, avoid freeze thaw cycles.

**Precautions**

AGR2/AGR3 Antibody (clone AGR3.4) is for research use only and not for use in diagnostic or therapeutic procedures.

**AGR2/AGR3 Antibody (clone AGR3.4) - Protein Information****Name** AGR2**Synonyms** AG2**Function**

Required for MUC2 post-transcriptional synthesis and secretion. May play a role in the production of mucus by intestinal cells (By similarity). Proto-oncogene that may play a role in cell migration, cell differentiation and cell growth. Promotes cell adhesion (PubMed:<a href="http://www.uniprot.org/citations/23274113" target="\_blank">23274113</a>).

**Cellular Location**

Secreted. Endoplasmic reticulum {ECO:0000250|UniProtKB:O88312}

**Tissue Location**

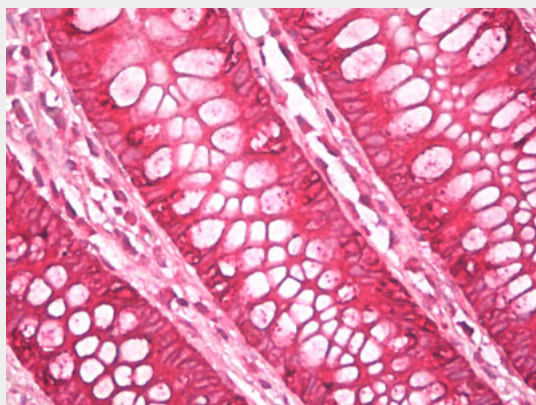
Expressed strongly in trachea, lung, stomach, colon, prostate and small intestine. Expressed weakly in pituitary gland, salivary gland, mammary gland, bladder, appendix, ovary, fetal lung, uterus, pancreas, kidney, fetal kidney, testis, placenta, thyroid gland and in estrogen receptor (ER)-positive breast cancer cell lines

#### **AGR2/AGR3 Antibody (clone AGR3.4) - Protocols**

Provided below are standard protocols that you may find useful for product applications.

- [Western Blot](#)
- [Blocking Peptides](#)
- [Dot Blot](#)
- [Immunohistochemistry](#)
- [Immunofluorescence](#)
- [Immunoprecipitation](#)
- [Flow Cytometry](#)
- [Cell Culture](#)

#### **AGR2/AGR3 Antibody (clone AGR3.4) - Images**



Anti-AGR2/AGR3 antibody IHC of human colon.