

CFB / Complement Factor B Antibody
Goat Polyclonal Antibody
Catalog # ALS15237**Specification**

CFB / Complement Factor B Antibody - Product Information

| | |
|-------------------|------------------------|
| Application | IHC |
| Primary Accession | P00751 |
| Reactivity | Human |
| Host | Goat |
| Clonality | Polyclonal |
| Calculated MW | 86kDa KDa |

CFB / Complement Factor B Antibody - Additional Information**Gene ID** 629**Other Names**

Complement factor B, 3.4.21.47, C3/C5 convertase, Glycine-rich beta glycoprotein, GBG, PBF2, Properdin factor B, Complement factor B Ba fragment, Complement factor B Bb fragment, CFB, BF, BFD

Target/Specificity

Human CFB / Factor B. In immunoelectrophoresis against human EDTA plasma a single precipitin line is obtained in the beta-2 region. The antiserum does not react with any other protein component of human serum or plasma. Cross-reactivity The antiserum ...

Reconstitution & Storage

Store lyophilized at 4°C. Once reconstituted, aliquot and store at -20°C. Avoid freeze/thaw cycles. Store undiluted.

Precautions

CFB / Complement Factor B Antibody is for research use only and not for use in diagnostic or therapeutic procedures.

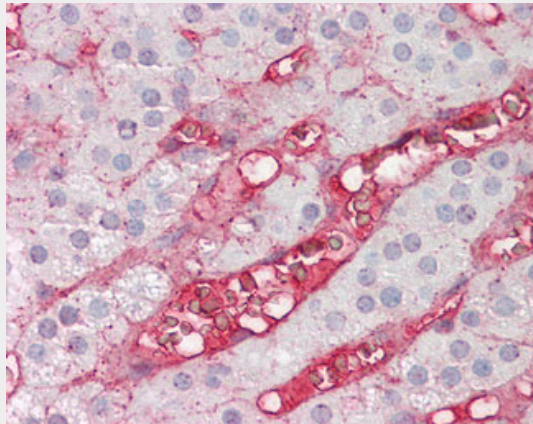
CFB / Complement Factor B Antibody - Protein Information**Name** CFB**Synonyms** BF, BFD**Function**

Factor B which is part of the alternate pathway of the complement system is cleaved by factor D into 2 fragments: Ba and Bb. Bb, a serine protease, then combines with complement factor 3b to generate the C3 or C5 convertase. It has also been implicated in proliferation and differentiation of preactivated B-lymphocytes, rapid spreading of peripheral blood monocytes, stimulation of lymphocyte blastogenesis and lysis of erythrocytes. Ba inhibits the proliferation of preactivated B-lymphocytes.

Cellular Location
Secreted.**CFB / Complement Factor B Antibody - Protocols**

Provided below are standard protocols that you may find useful for product applications.

- [Western Blot](#)
- [Blocking Peptides](#)
- [Dot Blot](#)
- [Immunohistochemistry](#)
- [Immunofluorescence](#)
- [Immunoprecipitation](#)
- [Flow Cytometry](#)
- [Cell Culture](#)

CFB / Complement Factor B Antibody - Images

Anti-CFB / Factor B antibody IHC of human adrenal.

CFB / Complement Factor B Antibody - Background

Factor B which is part of the alternate pathway of the complement system is cleaved by factor D into 2 fragments: Ba and Bb. Bb, a serine protease, then combines with complement factor 3b to generate the C3 or C5 convertase. It has also been implicated in proliferation and differentiation of preactivated B- lymphocytes, rapid spreading of peripheral blood monocytes, stimulation of lymphocyte blastogenesis and lysis of erythrocytes. Ba inhibits the proliferation of preactivated B-lymphocytes.

CFB / Complement Factor B Antibody - References

Davrinche C.,et al.Immunogenetics 32:309-312(1990).
Mejia J.E.,et al.Hum. Immunol. 39:49-53(1994).
Schwaeble W.,et al.Immunobiology 188:221-232(1993).
Horiuchi T.,et al.Mol. Immunol. 30:1587-1592(1993).
Jaatinen T.,et al.Submitted (FEB-2001) to the EMBL/GenBank/DDBJ databases.