

FLII / FLI Antibody (aa90-140)
Rabbit Polyclonal Antibody
Catalog # ALS15278**Specification**

FLII / FLI Antibody (aa90-140) - Product Information

Application	IHC
Primary Accession	Q13045
Reactivity	Human, Mouse, Rat, Monkey, Horse
Host	Rabbit
Clonality	Polyclonal
Calculated MW	145kDa KDa

FLII / FLI Antibody (aa90-140) - Additional Information**Gene ID** 2314**Other Names**

Protein flightless-1 homolog, FLII, FLIL

Target/Specificity

Human FLII

Reconstitution & Storage

Store at 4°C, stable for 6 months. For long term storage, aliquot and store at -20°C.

Precautions

FLII / FLI Antibody (aa90-140) is for research use only and not for use in diagnostic or therapeutic procedures.

FLII / FLI Antibody (aa90-140) - Protein Information**Name** FLII**Synonyms** FLIL**Function**

May play a role as coactivator in transcriptional activation by hormone-activated nuclear receptors (NR) and acts in cooperation with NCOA2 and CARM1. Involved in estrogen hormone signaling. Involved in early embryonic development (By similarity). May play a role in regulation of cytoskeletal rearrangements involved in cytokinesis and cell migration, by inhibiting Rac1-dependent paxillin phosphorylation.

Cellular Location

Nucleus. Cytoplasm, cytoskeleton. Cytoplasm, cytoskeleton, microtubule organizing center, centrosome. Cell junction, focal adhesion Note=Colocalizes to actin-rich structures in blastocysts and, together with HRAS, RHOA and CDC42, in migrating fibroblasts. Localizes to centrosomes (By similarity).

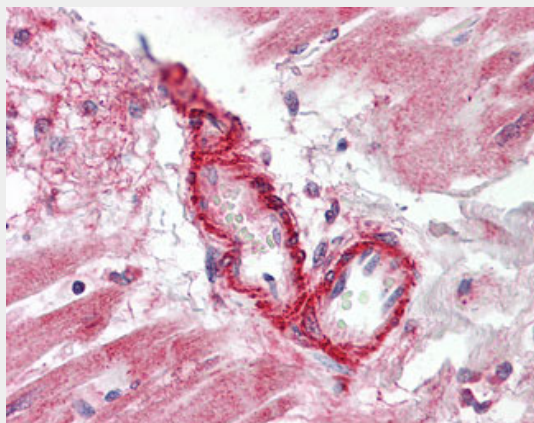
Tissue Location

Strongest expression in skeletal muscle with high expression also in the heart and lung.

FLII / FLI Antibody (aa90-140) - Protocols

Provided below are standard protocols that you may find useful for product applications.

- [Western Blot](#)
- [Blocking Peptides](#)
- [Dot Blot](#)
- [Immunohistochemistry](#)
- [Immunofluorescence](#)
- [Immunoprecipitation](#)
- [Flow Cytometry](#)
- [Cell Culture](#)

FLII / FLI Antibody (aa90-140) - Images

Anti-FLII / FLI antibody IHC of human heart.

FLII / FLI Antibody (aa90-140) - Background

May play a role as coactivator in transcriptional activation by hormone-activated nuclear receptors (NR) and acts in cooperation with NCOA2 and CARM1. Involved in estrogen hormone signaling. Involved in early embryonic development (By similarity). May play a role in regulation of cytoskeletal rearrangements involved in cytokinesis and cell migration, by inhibiting Rac1-dependent paxillin phosphorylation.

FLII / FLI Antibody (aa90-140) - References

Campbell H.D., et al. Genomics 42:46-54(1997).
Ota T., et al. Nat. Genet. 36:40-45(2004).
Zody M.C., et al. Nature 440:1045-1049(2006).
Gevaert K., et al. Nat. Biotechnol. 21:566-569(2003).
Campbell H.D., et al. Proc. Natl. Acad. Sci. U.S.A. 90:11386-11390(1993).