

LAT Antibody (aa70-120)
Rabbit Polyclonal Antibody
Catalog # ALS15292**Specification**

LAT Antibody (aa70-120) - Product Information

Application	WB, IHC-P
Primary Accession	O43561
Reactivity	Human, Mouse, Monkey
Host	Rabbit
Clonality	Polyclonal
Calculated MW	28kDa KDa
Dilution	WB~~1:1000 IHC-P~~N/A

LAT Antibody (aa70-120) - Additional Information**Gene ID** 27040**Other Names**

Linker for activation of T-cells family member 1, 36 kDa phospho-tyrosine adapter protein, pp36, p36-38, LAT

Target/Specificity

Human LAT

Reconstitution & Storage

Store at 4°C for short term applications. For long term storage, aliquot and store at -20°C.

Precautions

LAT Antibody (aa70-120) is for research use only and not for use in diagnostic or therapeutic procedures.

LAT Antibody (aa70-120) - Protein Information**Name** LAT**Function**

Required for TCR (T-cell antigen receptor)- and pre-TCR- mediated signaling, both in mature T-cells and during their development (PubMed:23514740, PubMed:25907557). Involved in FCGR3 (low affinity immunoglobulin gamma Fc region receptor III)-mediated signaling in natural killer cells and FCER1 (high affinity immunoglobulin epsilon receptor)-mediated signaling in mast cells. Couples activation of these receptors and their associated kinases with distal intracellular events such as mobilization of intracellular calcium stores, PKC activation, MAPK activation or cytoskeletal reorganization through the recruitment of PLCG1, GRB2, GRAP2, and other signaling molecules.

Cellular Location

Cell membrane; Single-pass type III membrane protein. Note=Present in lipid rafts

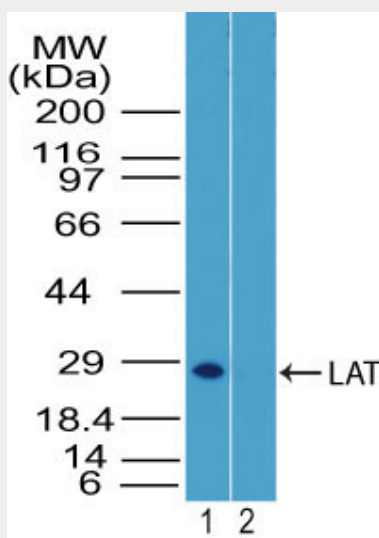
Tissue Location

Expressed in thymus, T-cells, NK cells, mast cells and, at lower levels, in spleen. Present in T-cells but not B-cells (at protein level).

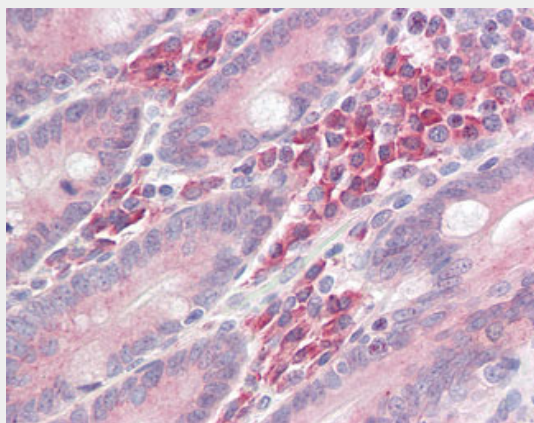
LAT Antibody (aa70-120) - Protocols

Provided below are standard protocols that you may find useful for product applications.

- [Western Blot](#)
- [Blocking Peptides](#)
- [Dot Blot](#)
- [Immunohistochemistry](#)
- [Immunofluorescence](#)
- [Immunoprecipitation](#)

LAT Antibody (aa70-120) - Images

Western blot of LAT in mouse thymus tissue lysate in the 1) absence and 2) presence of...



Anti-LAT1 / LAT antibody IHC of human small intestine.

LAT Antibody (aa70-120) - Background

Required for TCR (T-cell antigen receptor)- and pre-TCR- mediated signaling, both in mature T-cells and during their development. Involved in FCGR3 (low affinity immunoglobulin gamma Fc region receptor III)-mediated signaling in natural killer cells and FCER1 (high affinity immunoglobulin epsilon receptor)-mediated signaling in mast cells. Couples activation of these receptors and their associated kinases with distal intracellular events such as mobilization of intracellular calcium stores, PKC activation, MAPK activation or cytoskeletal reorganization through the recruitment of PLCG1, GRB2, GRAP2, and other signaling molecules.

LAT Antibody (aa70-120) - References

Zhang W.,et al.Cell 92:83-92(1998).
Weber J.R.,et al.J. Exp. Med. 187:1157-1161(1998).
Muschen M.,et al.Submitted (JUL-2009) to the EMBL/GenBank/DDBJ databases.
Martin J.,et al.Nature 432:988-994(2004).
Mural R.J.,et al.Submitted (JUL-2005) to the EMBL/GenBank/DDBJ databases.