

**KMT2D / MLL2 Antibody (N-Terminus)**  
**Goat Polyclonal Antibody**  
**Catalog # ALS15352****Specification**

---

**KMT2D / MLL2 Antibody (N-Terminus) - Product Information**

Application	IHC
Primary Accession	<a href="#">O14686</a>
Reactivity	Human
Host	Goat
Clonality	Polyclonal
Calculated MW	593kDa KDa

**KMT2D / MLL2 Antibody (N-Terminus) - Additional Information****Gene ID** 8085**Other Names**

Histone-lysine N-methyltransferase 2D, Lysine N-methyltransferase 2D, 2.1.1.43, ALL1-related protein, Myeloid/lymphoid or mixed-lineage leukemia protein 2, KMT2D, ALR, MLL2, MLL4

**Target/Specificity**

Human MLL2. The immunizing peptide was designed from NP\_003473.1. Since then the sequence has changed in the databases and currently differs at two locations in NP\_003473.3.

**Reconstitution & Storage**

Store at -20°C. Minimize freezing and thawing.

**Precautions**

KMT2D / MLL2 Antibody (N-Terminus) is for research use only and not for use in diagnostic or therapeutic procedures.

**KMT2D / MLL2 Antibody (N-Terminus) - Protein Information****Name** KMT2D**Synonyms** ALR, MLL2, MLL4**Function**

Histone methyltransferase that catalyzes methyl group transfer from S-adenosyl-L-methionine to the epsilon-amino group of 'Lys-4' of histone H3 (H3K4) (PubMed: [25561738](http://www.uniprot.org/citations/25561738)). Part of chromatin remodeling machinery predominantly forms H3K4me1 methylation marks at active chromatin sites where transcription and DNA repair take place (PubMed: [25561738](http://www.uniprot.org/citations/25561738), PubMed: [17500065](http://www.uniprot.org/citations/17500065)). Acts as a coactivator for estrogen receptor by being recruited by ESR1, thereby activating transcription (PubMed: [16603732](http://www.uniprot.org/citations/16603732)).

**Cellular Location**

Nucleus.

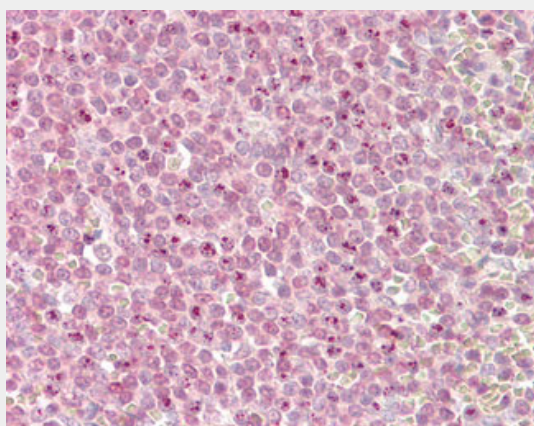
**Tissue Location**

Expressed in most adult tissues, including a variety of hematoipoietic cells, with the exception of the liver

**KMT2D / MLL2 Antibody (N-Terminus) - Protocols**

Provided below are standard protocols that you may find useful for product applications.

- [Western Blot](#)
- [Blocking Peptides](#)
- [Dot Blot](#)
- [Immunohistochemistry](#)
- [Immunofluorescence](#)
- [Immunoprecipitation](#)
- [Flow Cytometry](#)
- [Cell Culture](#)

**KMT2D / MLL2 Antibody (N-Terminus) - Images**

Anti-MLL2 antibody IHC of human spleen.

**KMT2D / MLL2 Antibody (N-Terminus) - Background**

Histone methyltransferase. Methylates 'Lys-4' of histone H3 (H3K4me). H3K4me represents a specific tag for epigenetic transcriptional activation. Acts as a coactivator for estrogen receptor by being recruited by ESR1, thereby activating transcription.

**KMT2D / MLL2 Antibody (N-Terminus) - References**

Prasad R.,et al.Oncogene 15:549-560(1997).  
Scherer S.E.,et al.Nature 440:346-351(2006).  
Goo Y.-H.,et al.Mol. Cell. Biol. 23:140-149(2003).  
Olsen J.V.,et al.Cell 127:635-648(2006).  
Mo R.,et al.J. Biol. Chem. 281:15714-15720(2006).