

BRUCE / BIRC6 Antibody (C-Terminus)
Goat Polyclonal Antibody
Catalog # ALS15353**Specification**

BRUCE / BIRC6 Antibody (C-Terminus) - Product Information

Application	IHC
Primary Accession	O9NR09
Reactivity	Human, Monkey
Host	Goat
Clonality	Polyclonal
Calculated MW	530kDa KDa

BRUCE / BIRC6 Antibody (C-Terminus) - Additional Information**Gene ID** 57448**Other Names**

Baculoviral IAP repeat-containing protein 6, 6.3.2.-, BIR repeat-containing ubiquitin-conjugating enzyme, BRUCE, Ubiquitin-conjugating BIR domain enzyme apollon, APOLLON, BIRC6, KIAA1289

Target/Specificity

Human BIRC6.

Reconstitution & Storage

Store at -20°C. Minimize freezing and thawing.

Precautions

BRUCE / BIRC6 Antibody (C-Terminus) is for research use only and not for use in diagnostic or therapeutic procedures.

BRUCE / BIRC6 Antibody (C-Terminus) - Protein Information**Name** BIRC6**Synonyms** KIAA1289**Function**

Anti-apoptotic protein which can regulate cell death by controlling caspases and by acting as an E3 ubiquitin-protein ligase. Has an unusual ubiquitin conjugation system in that it could combine in a single polypeptide, ubiquitin conjugating (E2) with ubiquitin ligase (E3) activity, forming a chimeric E2/E3 ubiquitin ligase. Its targets include CASP9 and DIABLO/SMAC. Acts as an inhibitor of CASP3, CASP7 and CASP9. Important regulator for the final stages of cytokinesis. Crucial for normal vesicle targeting to the site of abscission, but also for the integrity of the midbody and the midbody ring, and its striking ubiquitin modification.

Cellular Location

Golgi apparatus, trans-Golgi network membrane. Endosome Cytoplasm, cytoskeleton, spindle pole

Cytoplasm, cytoskeleton, microtubule organizing center, centrosome. Midbody, Midbody ring. Note=Exhibits cell cycle-dependent localization. Concentrates in a pericentriolar compartment in interphase, moves partially to spindle poles in metaphase, and finally localizes to the spindle midzone and the midbody in telophase and during cytokinesis. On the midbody, localizes to the midbody ring, also called Flemming body (PubMed:18329369). In interphase cells, localizes to the trans-Golgi network membrane and endosomes. During cytokinesis, a fraction moves to the midzone where it specifically arrives at the midbody ring. After abscission completion, travels with the midbody remnant into one daughter cell, and remains bound to it until a new midbody ring is formed during the next cell division (PubMed:18329369)

Tissue Location

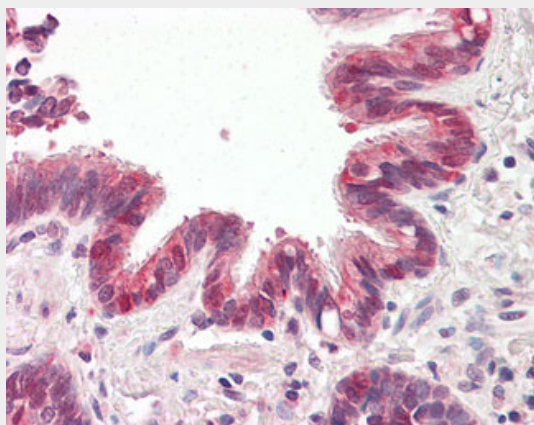
Expressed in brain cancer cells.

BRUCE / BIRC6 Antibody (C-Terminus) - Protocols

Provided below are standard protocols that you may find useful for product applications.

- [Western Blot](#)
- [Blocking Peptides](#)
- [Dot Blot](#)
- [Immunohistochemistry](#)
- [Immunofluorescence](#)
- [Immunoprecipitation](#)
- [Flow Cytometry](#)
- [Cell Culture](#)

BRUCE / BIRC6 Antibody (C-Terminus) - Images



Anti-BRUCE / BIRC6 antibody IHC of human lung, respiratory epithelium.

BRUCE / BIRC6 Antibody (C-Terminus) - Background

Anti-apoptotic protein which can regulate cell death by controlling caspases and by acting as an E3 ubiquitin-protein ligase. Has an unusual ubiquitin conjugation system in that it could combine in a single polypeptide, ubiquitin conjugating (E2) with ubiquitin ligase (E3) activity, forming a chimeric E2/E3 ubiquitin ligase. Its targets include CASP9 and DIABLO/SMAC. Acts as an inhibitor of CASP3, CASP7 and CASP9. Important regulator for the final stages of cytokinesis. Crucial for normal vesicle targeting to the site of abscission, but also for the integrity of the midbody and the midbody ring, and its striking ubiquitin modification.

BRUCE / BIRC6 Antibody (C-Terminus) - References

Hillier L.W.,et al.Nature 434:724-731(2005).
Chen Z.,et al.Biochem. Biophys. Res. Commun. 264:847-854(1999).
Nagase T.,et al.DNA Res. 6:337-345(1999).
Nakajima D.,et al.DNA Res. 9:99-106(2002).
Qiu X.B.,et al.EMBO J. 23:800-810(2004).