

RAB4A / RAB4 Antibody
Rabbit Polyclonal Antibody
Catalog # ALS15444**Specification**

RAB4A / RAB4 Antibody - Product Information

Application	WB, IHC-P, IF
Primary Accession	P20338
Reactivity	Human, Mouse, Rat
Host	Rabbit
Clonality	Polyclonal
Calculated MW	24kDa KDa
Dilution	WB~~1:1000 IHC-P~~N/A IF~~1:50~200

RAB4A / RAB4 Antibody - Additional Information**Gene ID** 5867**Other Names**

Ras-related protein Rab-4A, RAB4A, RAB4

Target/Specificity

Detects ~26 kD protein.

Reconstitution & Storage

Short term 4°C, long term aliquot and store at -20°C, avoid freeze thaw cycles.

Precautions

RAB4A / RAB4 Antibody is for research use only and not for use in diagnostic or therapeutic procedures.

RAB4A / RAB4 Antibody - Protein Information**Name** RAB4A ([HGNC:9781](#))**Synonyms** RAB4**Function**

The small GTPases Rab are key regulators of intracellular membrane trafficking, from the formation of transport vesicles to their fusion with membranes. Rabs cycle between an inactive GDP-bound form and an active GTP-bound form that is able to recruit to membranes different sets of downstream effectors directly responsible for vesicle formation, movement, tethering and fusion (PubMed: [15907487](http://www.uniprot.org/citations/15907487), PubMed: [16034420](http://www.uniprot.org/citations/16034420)). RAB4A is involved in protein transport (PubMed: [29425100](http://www.uniprot.org/citations/29425100)). Also plays a

role in vesicular traffic. Mediates VEGFR2 endosomal trafficking to enhance VEGFR2 signaling (PubMed:29425100). Acts as a regulator of platelet alpha-granule release during activation and aggregation of platelets (By similarity).

Cellular Location

Membrane; Peripheral membrane protein. Cytoplasm Early endosome membrane {ECO:0000250|UniProtKB:P05714}; Peripheral membrane protein {ECO:0000250|UniProtKB:P05714}. Recycling endosome membrane {ECO:0000250|UniProtKB:P05714}; Peripheral membrane protein {ECO:0000250|UniProtKB:P05714}. Note=Generally associated with membranes. Cytoplasmic when phosphorylated by CDK1

Volume

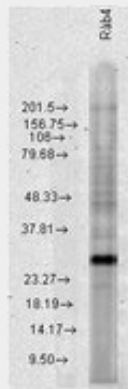
50 µl

RAB4A / RAB4 Antibody - Protocols

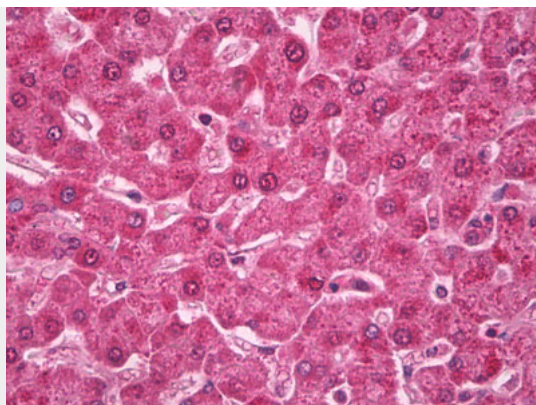
Provided below are standard protocols that you may find useful for product applications.

- [Western Blot](#)
- [Blocking Peptides](#)
- [Dot Blot](#)
- [Immunohistochemistry](#)
- [Immunofluorescence](#)
- [Immunoprecipitation](#)
- [Flow Cytometry](#)
- [Cell Culture](#)

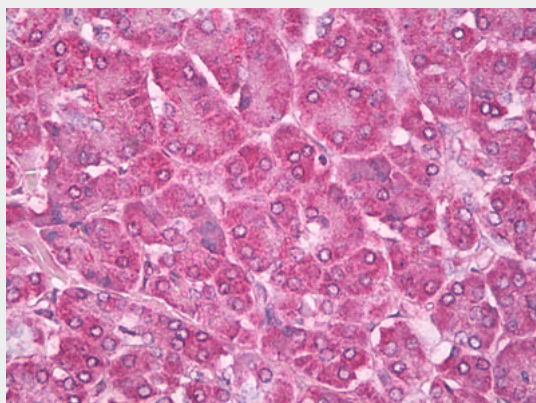
RAB4A / RAB4 Antibody - Images



Rab4, HeLa.



Anti-Ras-related protein Rab-4 (RAB4) antibody IHC of human liver.



Anti-Ras-related protein Rab-4 (RAB4) antibody IHC of human pancreas.

RAB4A / RAB4 Antibody - Background

Protein transport. Probably involved in vesicular traffic (By similarity).

RAB4A / RAB4 Antibody - References

- Zahraoui A.,et al.J. Biol. Chem. 264:12394-12401(1989).
- Nagy G.,et al.J. Biol. Chem. 281:34574-34591(2006).
- Puhl H.L. III,et al.Submitted (APR-2002) to the EMBL/GenBank/DDBJ databases.
- Ota T.,et al.Nat. Genet. 36:40-45(2004).
- Gregory S.G.,et al.Nature 441:315-321(2006).