

CHML Antibody (aa128-177)
Rabbit Polyclonal Antibody
Catalog # ALS15514**Specification**

CHML Antibody (aa128-177) - Product Information

Application	WB, IHC-P, E
Primary Accession	P26374
Reactivity	Human
Host	Rabbit
Clonality	Polyclonal
Calculated MW	74kDa KDa
Dilution	WB~~1:1000 IHC-P~~N/A E~~N/A

CHML Antibody (aa128-177) - Additional Information**Gene ID** 1122**Other Names**

Rab proteins geranylgeranyltransferase component A 2, Choroideremia-like protein, Rab escort protein 2, REP-2, CHML, REP2

Target/Specificity

CHML Antibody detects endogenous levels of total CHML protein.

Reconstitution & Storage

Store at -20°C for up to one year.

Precautions

CHML Antibody (aa128-177) is for research use only and not for use in diagnostic or therapeutic procedures.

CHML Antibody (aa128-177) - Protein Information**Name** CHML**Synonyms** REP2**Function**

Substrate-binding subunit (component A) of the Rab geranylgeranyltransferase (GGTase) complex. Binds unprenylated Rab proteins and presents the substrate peptide to the catalytic component B. The component A is thought to be regenerated by transferring its prenylated Rab back to the donor membrane. Less effective than CHM in supporting prenylation of Rab3 family.

Cellular Location

Cytoplasm, cytosol.

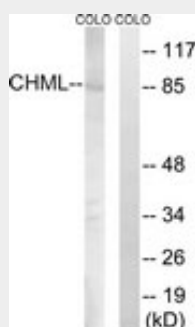
Volume
50 µl

CHML Antibody (aa128-177) - Protocols

Provided below are standard protocols that you may find useful for product applications.

- [Western Blot](#)
- [Blocking Peptides](#)
- [Dot Blot](#)
- [Immunohistochemistry](#)
- [Immunofluorescence](#)
- [Immunoprecipitation](#)
- [Flow Cytometry](#)
- [Cell Culture](#)

CHML Antibody (aa128-177) - Images



Western blot of extracts from COLO cells, using CHML Antibody.

CHML Antibody (aa128-177) - Background

Substrate-binding subunit (component A) of the Rab geranylgeranyltransferase (GGTase) complex. Binds unprenylated Rab proteins and presents the substrate peptide to the catalytic component B. The component A is thought to be regenerated by transferring its prenylated Rab back to the donor membrane. Less effective than CHM in supporting prenylation of Rab3 family.

CHML Antibody (aa128-177) - References

Cremers F.P.M., et al. Hum. Mol. Genet. 1:71-75(1992).
Kasper G., et al. Gene 295:27-32(2002).
Ota T., et al. Nat. Genet. 36:40-45(2004).
Gregory S.G., et al. Nature 441:315-321(2006).
Mural R.J., et al. Submitted (JUL-2005) to the EMBL/GenBank/DDBJ databases.