

**STK36 Antibody (aa387-436)**  
**Rabbit Polyclonal Antibody**  
**Catalog # ALS15518****Specification**

---

**STK36 Antibody (aa387-436) - Product Information**

Application	WB
Primary Accession	<a href="#">Q9NRP7</a>
Reactivity	Human, Mouse
Host	Rabbit
Clonality	Polyclonal
Calculated MW	144kDa KDa

**STK36 Antibody (aa387-436) - Additional Information****Gene ID** 27148**Other Names**

Serine/threonine-protein kinase 36, 2.7.11.1, Fused homolog, STK36  
{ECO:0000312|EMBL:AAH26158.1}

**Target/Specificity**

STK36 Antibody detects endogenous levels of total STK36 protein.

**Reconstitution & Storage**

Store at -20°C for up to one year.

**Precautions**

STK36 Antibody (aa387-436) is for research use only and not for use in diagnostic or therapeutic procedures.

**STK36 Antibody (aa387-436) - Protein Information****Name** STK36 {ECO:0000312|EMBL:AAH26158.1}**Function**

Serine/threonine protein kinase which plays an important role in the sonic hedgehog (Shh) pathway by regulating the activity of GLI transcription factors (PubMed:<a href="http://www.uniprot.org/citations/10806483" target="\_blank">10806483</a>). Controls the activity of the transcriptional regulators GLI1, GLI2 and GLI3 by opposing the effect of SUFU and promoting their nuclear localization (PubMed:<a href="http://www.uniprot.org/citations/10806483" target="\_blank">10806483</a>). GLI2 requires an additional function of STK36 to become transcriptionally active, but the enzyme does not need to possess an active kinase catalytic site for this to occur (PubMed:<a href="http://www.uniprot.org/citations/10806483" target="\_blank">10806483</a>). Required for postnatal development, possibly by regulating the homeostasis of cerebral spinal fluid or ciliary function. Essential for construction of the central pair apparatus of motile cilia.

**Cellular Location**

Cytoplasm. Nucleus. Cytoplasm, cytoskeleton, cilium axoneme. Note=Low levels also present in the nucleus.

**Tissue Location**

Expressed at low levels in most fetal tissues, adult ovaries and at high levels in adult testis, where it is localized in germ cells (PubMed:10806483). Expressed in respiratory epithelial cells of the lung (PubMed:28543983).

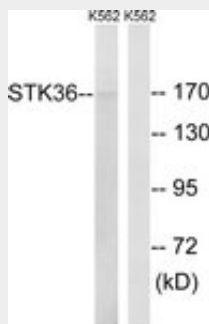
**Volume**

50  $\mu$ l

**STK36 Antibody (aa387-436) - Protocols**

Provided below are standard protocols that you may find useful for product applications.

- [Western Blot](#)
- [Blocking Peptides](#)
- [Dot Blot](#)
- [Immunohistochemistry](#)
- [Immunofluorescence](#)
- [Immunoprecipitation](#)
- [Flow Cytometry](#)
- [Cell Culture](#)

**STK36 Antibody (aa387-436) - Images**

Western blot of extracts from K562 cells, using STK36 Antibody.

**STK36 Antibody (aa387-436) - Background**

Serine/threonine protein kinase which plays an important role in the sonic hedgehog (Shh) pathway by regulating the activity of GLI transcription factors. Controls the activity of the transcriptional regulators GLI1, GLI2 and GLI3 by opposing the effect of SUFU and promoting their nuclear localization. GLI2 requires an additional function of STK36 to become transcriptionally active, but the enzyme does not need to possess an active kinase catalytic site for this to occur. Required for postnatal development, possibly by regulating the homeostasis of cerebral spinal fluid or ciliary function. Essential for construction of the central pair apparatus of motile cilia.

**STK36 Antibody (aa387-436) - References**

Murone M., et al. Nat. Cell Biol. 2:310-312(2000).  
Nagase T., et al. DNA Res. 6:337-345(1999).  
Hillier L.W., et al. Nature 434:724-731(2005).

Bechtel S.,et al.BMC Genomics 8:399-399(2007).  
Ota T.,et al.Nat. Genet. 36:40-45(2004).