

Superoxide Dismutase Antibody
Rabbit Polyclonal Antibody
Catalog # ALS15550**Specification**

Superoxide Dismutase Antibody - Product Information

Application	IHC, WB
Primary Accession	P00441
Reactivity	Human, Mouse, Rat, Bovine
Host	Rabbit
Clonality	Polyclonal

Superoxide Dismutase Antibody - Additional Information**Gene ID** 6647**Other Names**

Superoxide dismutase [Cu-Zn], 1.15.1.1, Superoxide dismutase 1, hSod1, SOD1

Target/Specificity

Bovine Superoxide Dismutase

Reconstitution & Storage

Store at 4°C for short term applications. For long term storage, aliquot and store at -20°C.

Precautions

Superoxide Dismutase Antibody is for research use only and not for use in diagnostic or therapeutic procedures.

Superoxide Dismutase Antibody - Protein Information**Name** SOD1 ([HGNC:11179](#))**Function**

Destroys radicals which are normally produced within the cells and which are toxic to biological systems.

Cellular Location

Cytoplasm. Nucleus. Note=Predominantly cytoplasmic; the pathogenic variants ALS1 Arg-86 and Ala-94 gradually aggregates and accumulates in mitochondria.

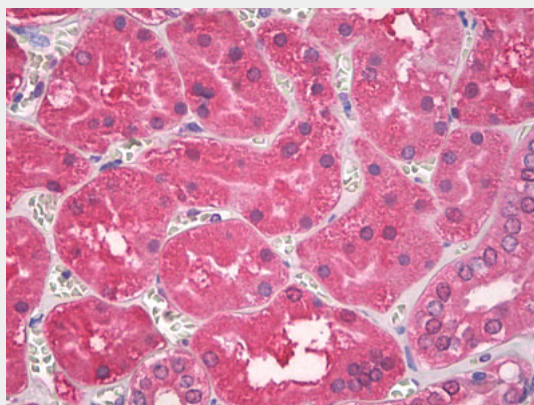
Superoxide Dismutase Antibody - Protocols

Provided below are standard protocols that you may find useful for product applications.

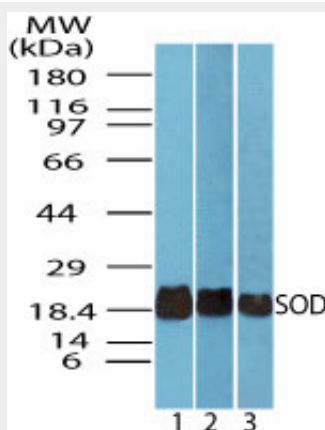
- [Western Blot](#)

- [Blocking Peptides](#)
- [Dot Blot](#)
- [Immunohistochemistry](#)
- [Immunofluorescence](#)
- [Immunoprecipitation](#)
- [Flow Cytometry](#)
- [Cell Culture](#)

Superoxide Dismutase Antibody - Images



Anti-Superoxide Dismutase antibody IHC of human kidney, tubules.



Western blot of SOD in liver lysate of 1) human, 2) mouse and 3) rat using ALS15550 at 0.025 ug/ml.