

**Complement C4c Antibody (clone 10-12)**  
**Mouse Monoclonal Antibody**  
**Catalog # ALS15574****Specification**

---

**Complement C4c Antibody (clone 10-12) - Product Information**

Application	IHC
Reactivity	Human
Host	Mouse
Clonality	Monoclonal

**Complement C4c Antibody (clone 10-12) - Additional Information****Target/Specificity**

Recognizes complement component 4c (C4c). The complement 1 complex cleaves complement 4 (C4) to form C4b and C4a. C4b levels are strictly regulated. Single site cleavage of the C4b's alpha chain by Factor I forms iC4b and blocks C3 convertase, inhibi ...

**Reconstitution & Storage**

Short term 4°C, long term aliquot and store at -20°C, avoid freeze thaw cycles. Store undiluted.

**Precautions**

Complement C4c Antibody (clone 10-12) is for research use only and not for use in diagnostic or therapeutic procedures.

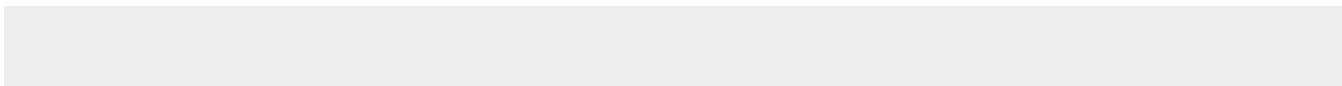
**Complement C4c Antibody (clone 10-12) - Protein Information****Volume**

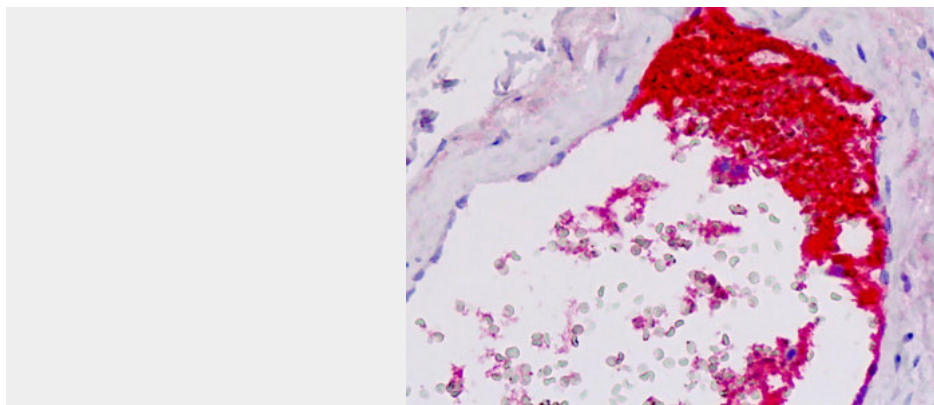
100 µl

**Complement C4c Antibody (clone 10-12) - Protocols**

Provided below are standard protocols that you may find useful for product applications.

- [Western Blot](#)
- [Blocking Peptides](#)
- [Dot Blot](#)
- [Immunohistochemistry](#)
- [Immunofluorescence](#)
- [Immunoprecipitation](#)
- [Flow Cytometry](#)
- [Cell Culture](#)

**Complement C4c Antibody (clone 10-12) - Images**



Anti-Complement C4c antibody IHC staining of human vessel.