

**STAT5A Antibody**  
**Rabbit Polyclonal Antibody**  
**Catalog # ALS15575****Specification**

---

**STAT5A Antibody - Product Information**

Application	WB, IHC-P, IP
Primary Accession	<a href="#">P42229</a>
Reactivity	Human, Mouse, Rat, Pig, Bovine
Host	Rabbit
Clonality	Polyclonal
Calculated MW	91kDa KDa
Dilution	WB~~1:1000 IHC-P~~N/A IP~~N/A

**STAT5A Antibody - Additional Information****Gene ID** 6776**Other Names**

Signal transducer and activator of transcription 5A, STAT5A, STAT5

**Target/Specificity**

The antibody recognizes ~95 kD Stat5 of human, mouse and rat origins. Reactivity to other species has not been tested.

**Reconstitution & Storage**

Short term +4°C (no longer than one week); Long term -20°C; Aliquot to avoid freeze/thaw cycles.

**Precautions**

STAT5A Antibody is for research use only and not for use in diagnostic or therapeutic procedures.

**STAT5A Antibody - Protein Information****Name** STAT5A**Synonyms** STAT5**Function**

Carries out a dual function: signal transduction and activation of transcription. Mediates cellular responses to the cytokine KITLG/SCF and other growth factors. Mediates cellular responses to ERBB4. May mediate cellular responses to activated FGFR1, FGFR2, FGFR3 and FGFR4. Binds to the GAS element and activates PRL- induced transcription. Regulates the expression of milk proteins during lactation.

**Cellular Location**

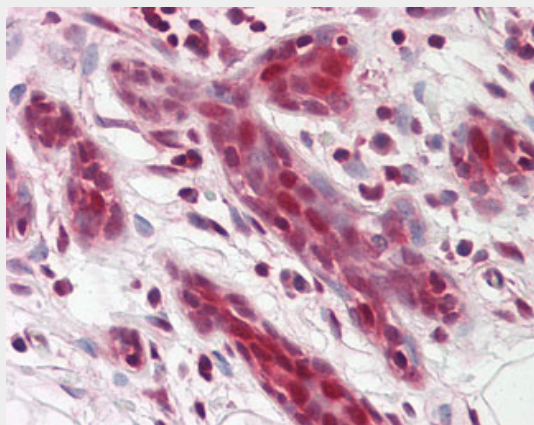
Cytoplasm. Nucleus. Note=Translocated into the nucleus in response to phosphorylation

## STAT5A Antibody - Protocols

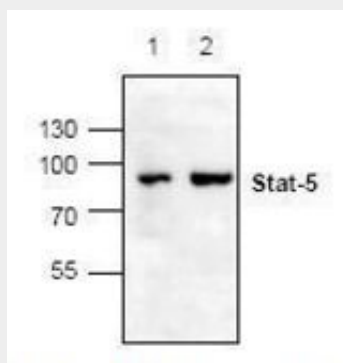
Provided below are standard protocols that you may find useful for product applications.

- [Western Blot](#)
- [Blocking Peptides](#)
- [Dot Blot](#)
- [Immunohistochemistry](#)
- [Immunofluorescence](#)
- [Immunoprecipitation](#)
- [Flow Cytometry](#)
- [Cell Culture](#)

## STAT5A Antibody - Images



Anti-STAT5A antibody IHC staining of human breast.



Western blot of 3T3 cell lysate (Lane 1) and rat kidney tissue lysate (Lane 2) with STAT5A /...

## STAT5A Antibody - Background

Carries out a dual function: signal transduction and activation of transcription. Mediates cellular responses to the cytokine KITLG/SCF and other growth factors. Mediates cellular responses to ERBB4. May mediate cellular responses to activated FGFR1, FGFR2, FGFR3 and FGFR4. Binds to the GAS element and activates PRL-induced transcription. Regulates the expression of milk proteins during lactation.

## STAT5A Antibody - References

Hou J.,et al.Immunity 2:321-329(1995).  
Lin J.X.,et al.Submitted (DEC-1995) to the EMBL/GenBank/DDBJ databases.  
Tan D.,et al.Submitted (APR-2006) to the EMBL/GenBank/DDBJ databases.  
Ota T.,et al.Nat. Genet. 36:40-45(2004).  
Zody M.C.,et al.Nature 440:1045-1049(2006).