

**VASP Antibody**  
**Rabbit Polyclonal Antibody**  
**Catalog # ALS15576****Specification**

---

**VASP Antibody - Product Information**

Application	WB
Primary Accession	<a href="#">P50552</a>
Reactivity	Human, Mouse, Rat
Host	Rabbit
Clonality	Polyclonal
Calculated MW	40kDa KDa

**VASP Antibody - Additional Information****Gene ID** 7408**Other Names**

Vasodilator-stimulated phosphoprotein, VASP, VASP

**Target/Specificity**

Human VASP

**Reconstitution & Storage**

Short term +4°C (no longer than one week); Long term -20°C; Aliquot to avoid freeze/thaw cycles.

**Precautions**

VASP Antibody is for research use only and not for use in diagnostic or therapeutic procedures.

**VASP Antibody - Protein Information****Name** VASP**Function**

Ena/VASP proteins are actin-associated proteins involved in a range of processes dependent on cytoskeleton remodeling and cell polarity such as axon guidance, lamellipodial and filopodial dynamics, platelet activation and cell migration. VASP promotes actin filament elongation. It protects the barbed end of growing actin filaments against capping and increases the rate of actin polymerization in the presence of capping protein. VASP stimulates actin filament elongation by promoting the transfer of profilin-bound actin monomers onto the barbed end of growing actin filaments. Plays a role in actin-based mobility of *Listeria monocytogenes* in host cells. Regulates actin dynamics in platelets and plays an important role in regulating platelet aggregation.

**Cellular Location**

Cytoplasm. Cytoplasm, cytoskeleton. Cell junction, focal adhesion. Cell junction, tight junction Cell projection, lamellipodium membrane. Cell projection, filopodium membrane. Note=Targeted to stress fibers and focal adhesions through interaction with a number of proteins including MRL family members Localizes to the plasma membrane in protruding lamellipodia and filopodial tips.

Stimulation by thrombin or PMA, also translocates VASP to focal adhesions. Localized along the sides of actin filaments throughout the peripheral cytoplasm under basal conditions. In pre-apoptotic cells, colocalizes with MEFV in large specks (pyroptosomes)

**Tissue Location**

Highly expressed in platelets.

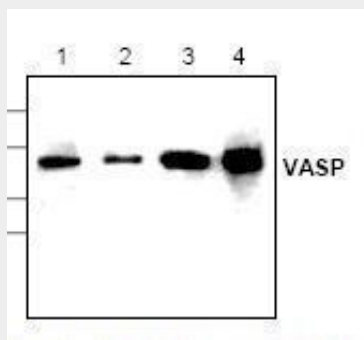
**Volume**

100 µl

**VASP Antibody - Protocols**

Provided below are standard protocols that you may find useful for product applications.

- [Western Blot](#)
- [Blocking Peptides](#)
- [Dot Blot](#)
- [Immunohistochemistry](#)
- [Immunofluorescence](#)
- [Immunoprecipitation](#)
- [Flow Cytometry](#)
- [Cell Culture](#)

**VASP Antibody - Images**

Western blot of VASP antibody in Jurkat cell lysate (Lanes 1,2), 3T3 cell lysate (Lane 3), and...

**VASP Antibody - Background**

Ena/VASP proteins are actin-associated proteins involved in a range of processes dependent on cytoskeleton remodeling and cell polarity such as axon guidance, lamellipodial and filopodial dynamics, platelet activation and cell migration. VASP promotes actin filament elongation. It protects the barbed end of growing actin filaments against capping and increases the rate of actin polymerization in the presence of capping protein. VASP stimulates actin filament elongation by promoting the transfer of profilin- bound actin monomers onto the barbed end of growing actin filaments. Plays a role in actin-based mobility of *Listeria monocytogenes* in host cells. Regulates actin dynamics in platelets and plays an important role in regulating platelet aggregation.

**VASP Antibody - References**

Haffner C., et al. EMBO J. 14:19-27(1995).  
Laurent V., et al. J. Cell Biol. 144:1245-1258(1999).  
Ota T., et al. Nat. Genet. 36:40-45(2004).

Mural R.J.,et al.Submitted (JUL-2005) to the EMBL/GenBank/DDBJ databases.  
Gevaert K.,et al.Nat. Biotechnol. 21:566-569(2003).