

**NKX2-6 Antibody (Internal)**  
**Rabbit Polyclonal Antibody**  
**Catalog # ALS15601****Specification**

---

**NKX2-6 Antibody (Internal) - Product Information**

Application	IHC, IF, WB
Primary Accession	<a href="#">A6NCS4</a>
Reactivity	Human
Host	Rabbit
Clonality	Polyclonal
Calculated MW	32kDa KDa

**NKX2-6 Antibody (Internal) - Additional Information****Gene ID** 137814**Other Names**

Homeobox protein Nkx-2.6, Homeobox protein NK-2 homolog F, NKX2-6, NKX2F

**Target/Specificity**

Human NKX2-6. NKX2-6 antibody is predicted to not cross-react with other NK2 homeobox family members. At least two isoforms of NKX2-6 are known to exist; this antibody will detect both isoforms.

**Reconstitution & Storage**

Long term: -20°C; Short term: +4°C. Avoid repeat freeze-thaw cycles.

**Precautions**

NKX2-6 Antibody (Internal) is for research use only and not for use in diagnostic or therapeutic procedures.

**NKX2-6 Antibody (Internal) - Protein Information****Name** NKX2-6**Synonyms** NKX2F**Function**

Acts as a transcriptional activator (PubMed:<a href="http://www.uniprot.org/citations/15649947" target="\_blank">15649947</a>). In conjunction with NKX2-5, may play a role in both pharyngeal and cardiac embryonic development.

**Cellular Location**

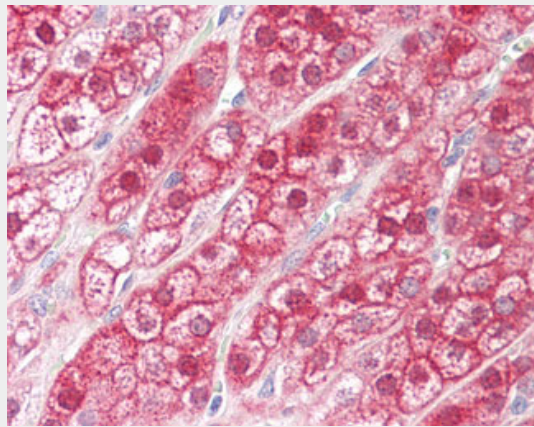
Nucleus.

## NKX2-6 Antibody (Internal) - Protocols

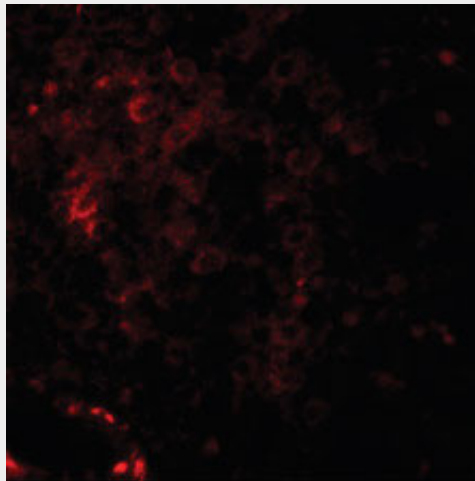
Provided below are standard protocols that you may find useful for product applications.

- [Western Blot](#)
- [Blocking Peptides](#)
- [Dot Blot](#)
- [Immunohistochemistry](#)
- [Immunofluorescence](#)
- [Immunoprecipitation](#)
- [Flow Cytometry](#)
- [Cell Culture](#)

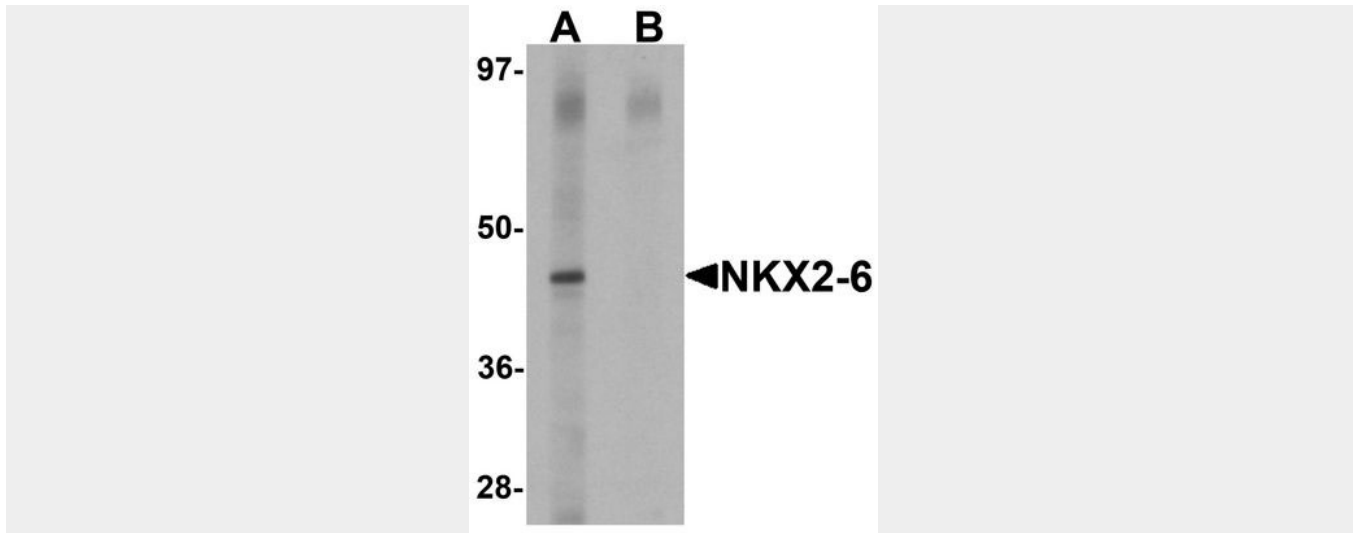
## NKX2-6 Antibody (Internal) - Images



Anti-NKX2-6 antibody IHC staining of human adrenal.



Immunofluorescence of NKX-6 in human spleen tissue with NKX2-6 antibody at 20 ug/ml.



Western blot analysis of NKX2-6 in mouse heart tissue lysate with NKX2-6 antibody at 1 ug/ml in...

#### **NKX2-6 Antibody (Internal) - Background**

In conjunction with NKX2-5, may play a role in both pharyngeal and cardiac embryonic development.

#### **NKX2-6 Antibody (Internal) - References**

Nusbaum C., et al. Nature 439:331-335(2006).  
Brandenberger R., et al. Nat. Biotechnol. 22:707-716(2004).  
Heathcote K., et al. Hum. Mol. Genet. 14:585-593(2005).