

RILPL2 Antibody (Internal)
Rabbit Polyclonal Antibody
Catalog # ALS15615**Specification**

RILPL2 Antibody (Internal) - Product Information

Application	IF
Primary Accession	Q969X0
Reactivity	Human
Host	Rabbit
Clonality	Polyclonal
Calculated MW	24kDa KDa

RILPL2 Antibody (Internal) - Additional Information**Gene ID** 196383**Other Names**

RILP-like protein 2, Rab-interacting lysosomal protein-like 2, p40phox-binding protein, RILPL2, RLP2

Target/Specificity

Human RILPL2.

Reconstitution & Storage

Long term: -20°C; Short term: +4°C. Avoid repeat freeze-thaw cycles.

Precautions

RILPL2 Antibody (Internal) is for research use only and not for use in diagnostic or therapeutic procedures.

RILPL2 Antibody (Internal) - Protein Information**Name** RILPL2**Synonyms** RLP2**Function**

Involved in cell shape and neuronal morphogenesis, positively regulating the establishment and maintenance of dendritic spines (By similarity). Plays a role in cellular protein transport, including protein transport away from primary cilia (By similarity). May function via activation of RAC1 and PAK1 (By similarity).

Cellular Location

Cytoplasm, cytosol. Cytoplasm, cytoskeleton, microtubule organizing center, centrosome. Cell projection, cilium

Tissue Location

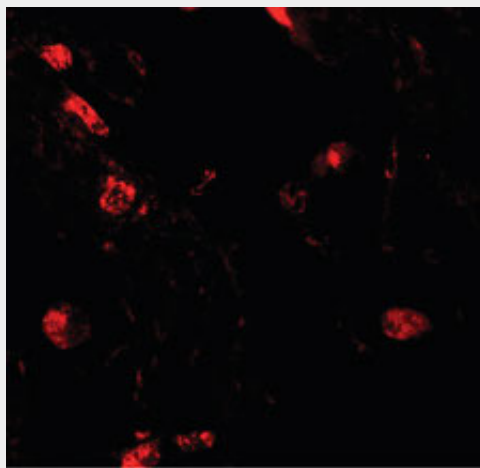
Widely expressed. Expressed at higher level in lung.

RILPL2 Antibody (Internal) - Protocols

Provided below are standard protocols that you may find useful for product applications.

- [Western Blot](#)
- [Blocking Peptides](#)
- [Dot Blot](#)
- [Immunohistochemistry](#)
- [Immunofluorescence](#)
- [Immunoprecipitation](#)
- [Flow Cytometry](#)
- [Cell Culture](#)

RILPL2 Antibody (Internal) - Images



Immunofluorescence of RLP2 in human lung tissue with RLP2 antibody at 20 ug/ml.

RILPL2 Antibody (Internal) - Background

Involved in cell shape and neuronal morphogenesis, positively regulating the establishment and maintenance of dendritic spines. Plays a role in cellular protein transport, including protein transport away from primary cilia. May function via activation of RAC1 and PAK1 (By similarity).

RILPL2 Antibody (Internal) - References

Kuribayashi F.,et al.Submitted (MAY-2002) to the EMBL/GenBank/DDBJ databases.
Ota T.,et al.Nat. Genet. 36:40-45(2004).
Mural R.J.,et al.Submitted (JUL-2005) to the EMBL/GenBank/DDBJ databases.
Wang T.,et al.Mol. Biol. Cell 15:815-826(2004).