

CASK Antibody (C-Terminus)
Rabbit Polyclonal Antibody
Catalog # ALS15633**Specification**

CASK Antibody (C-Terminus) - Product Information

Application	IF, WB
Primary Accession	O14936
Reactivity	Human
Host	Rabbit
Clonality	Polyclonal
Calculated MW	105kDa KDa

CASK Antibody (C-Terminus) - Additional Information**Gene ID** 8573**Other Names**

Peripheral plasma membrane protein CASK, hCASK, 2.7.11.1, Calcium/calmodulin-dependent serine protein kinase, Protein lin-2 homolog, CASK, LIN2

Target/Specificity

Human CASK. At least six alternatively spliced transcript variants have been observed.

Reconstitution & Storage

Store at -20°C. Aliquot to avoid freeze/thaw cycles.

Precautions

CASK Antibody (C-Terminus) is for research use only and not for use in diagnostic or therapeutic procedures.

CASK Antibody (C-Terminus) - Protein Information**Name** CASK ([HGNC:1497](#))**Synonyms** LIN2**Function**

Multidomain scaffolding Mg(2+)-independent protein kinase that catalyzes the phosphotransfer from ATP to proteins such as NRXN1, and plays a role in synaptic transmembrane protein anchoring and ion channel trafficking (PubMed:[18423203](http://www.uniprot.org/citations/18423203)). Contributes to neural development and regulation of gene expression via interaction with the transcription factor TBR1. Binds to cell-surface proteins, including amyloid precursor protein, neuroligins and syndecans. May mediate a link between the extracellular matrix and the actin cytoskeleton via its interaction with syndecan and with the actin/spectrin-binding protein 4.1. Component of the LIN-10-LIN-2-LIN-7 complex, which associates with the motor protein KIF17 to transport vesicles containing N-methyl-D- aspartate (NMDA) receptor subunit NR2B along microtubules (By

similarity).

Cellular Location

Nucleus {ECO:0000250|UniProtKB:Q62915}. Cytoplasm {ECO:0000250|UniProtKB:Q62915}. Cell membrane {ECO:0000250|UniProtKB:Q62915}; Peripheral membrane protein {ECO:0000250|UniProtKB:Q62915}

Tissue Location

Ubiquitous. Expression is significantly greater in brain relative to kidney, lung, and liver and in fetal brain and kidney relative to lung and liver.

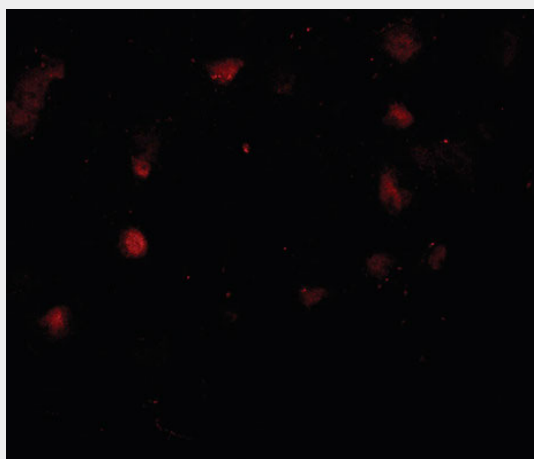
Volume

Array

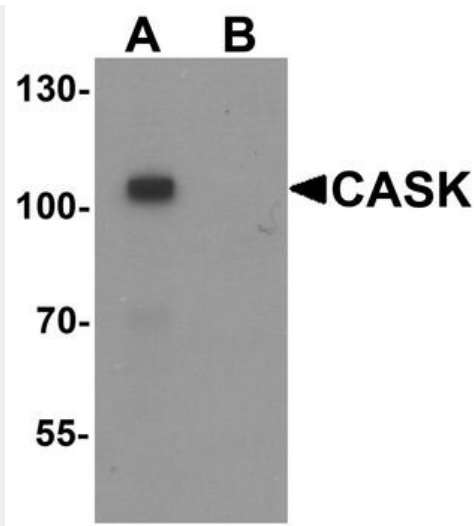
CASK Antibody (C-Terminus) - Protocols

Provided below are standard protocols that you may find useful for product applications.

- [Western Blot](#)
- [Blocking Peptides](#)
- [Dot Blot](#)
- [Immunohistochemistry](#)
- [Immunofluorescence](#)
- [Immunoprecipitation](#)
- [Flow Cytometry](#)
- [Cell Culture](#)

CASK Antibody (C-Terminus) - Images

Immunofluorescence of CASK in human brain tissue with CASK antibody at 20 ug/ml.



Western blot analysis of CASK in mouse brain tissue lysate with CASK antibody at 1 ug/ml in (A)...

CASK Antibody (C-Terminus) - Background

Multidomain scaffolding protein with a role in synaptic transmembrane protein anchoring and ion channel trafficking. Contributes to neural development and regulation of gene expression via interaction with the transcription factor TBR1. Binds to cell-surface proteins, including amyloid precursor protein, neuroligins and syndecans. May mediate a link between the extracellular matrix and the actin cytoskeleton via its interaction with syndecan and with the actin/spectrin-binding protein 4.1.

CASK Antibody (C-Terminus) - References

Cohen A.R., et al. J. Cell Biol. 142:129-138(1998).
Zha D., et al. Submitted (NOV-1997) to the EMBL/GenBank/DDBJ databases.
Ding L., et al. Submitted (FEB-2000) to the EMBL/GenBank/DDBJ databases.
Yan Y., et al. Submitted (AUG-2004) to the EMBL/GenBank/DDBJ databases.
Ross M.T., et al. Nature 434:325-337(2005).